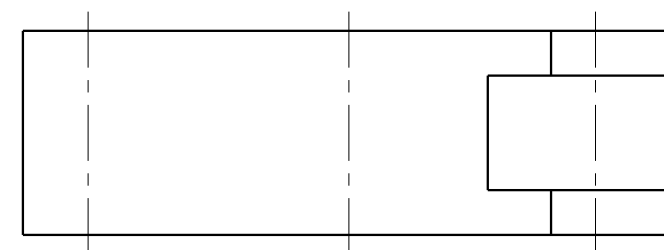
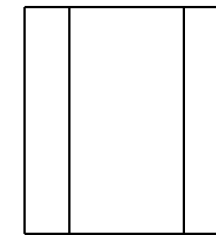
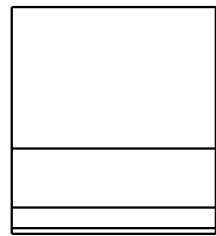
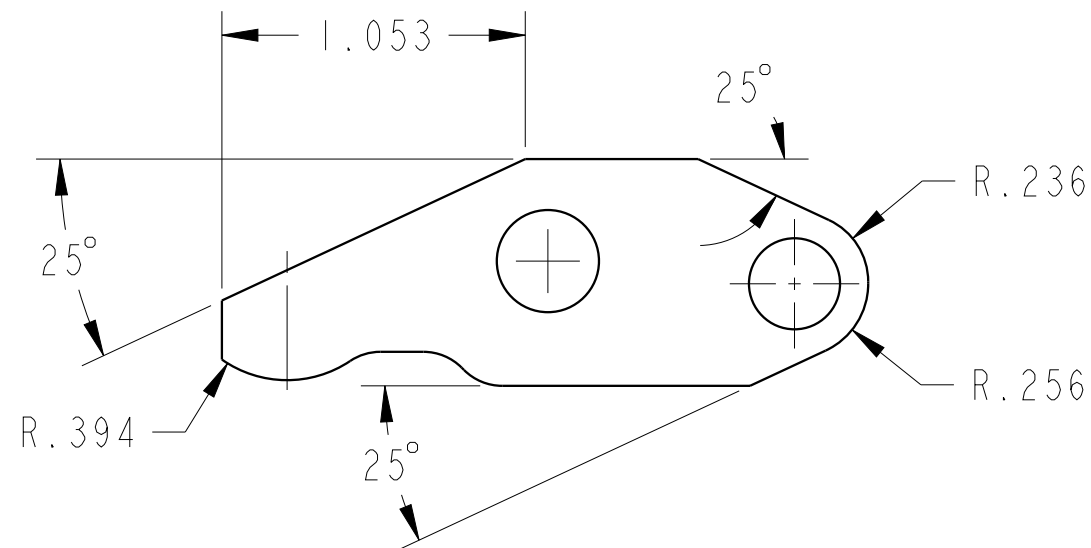
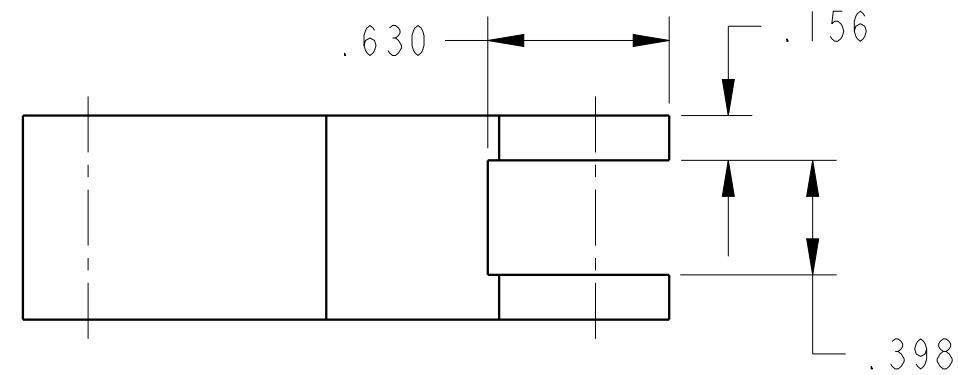



ILC91612220 REV B ECN 4344



CAD CONTROL DRAWING				 VEKTEK, INC. 1334 E. SIXTH AVE. P.O. BOX 625 EMPORIA, KS. 66801 U.S.A.			
B	4344	RELEASE	ALS	12/29/20	91612220	A	LEVER, TL360-TWIN, 2600 LB
REV	IN ACCORDANCE WITH ECN	EFFECTIVE DATE	REVISED BY	DATE	REFERENCE MODEL	REF REV	*****
DRW BY:	A.THOMSEN	DRAWING STATUS: Released			TOLERANCES DO NOT APPLY DIMENSIONS ARE NOMINAL		SIZE B
DATE:	11-NOV-2019	PRODUCTION APPROVED FOR RELEASED STATUS ONLY					ILC91612220 REV B

FORM FEG036, Rev. B

SHEET 1 OF 1