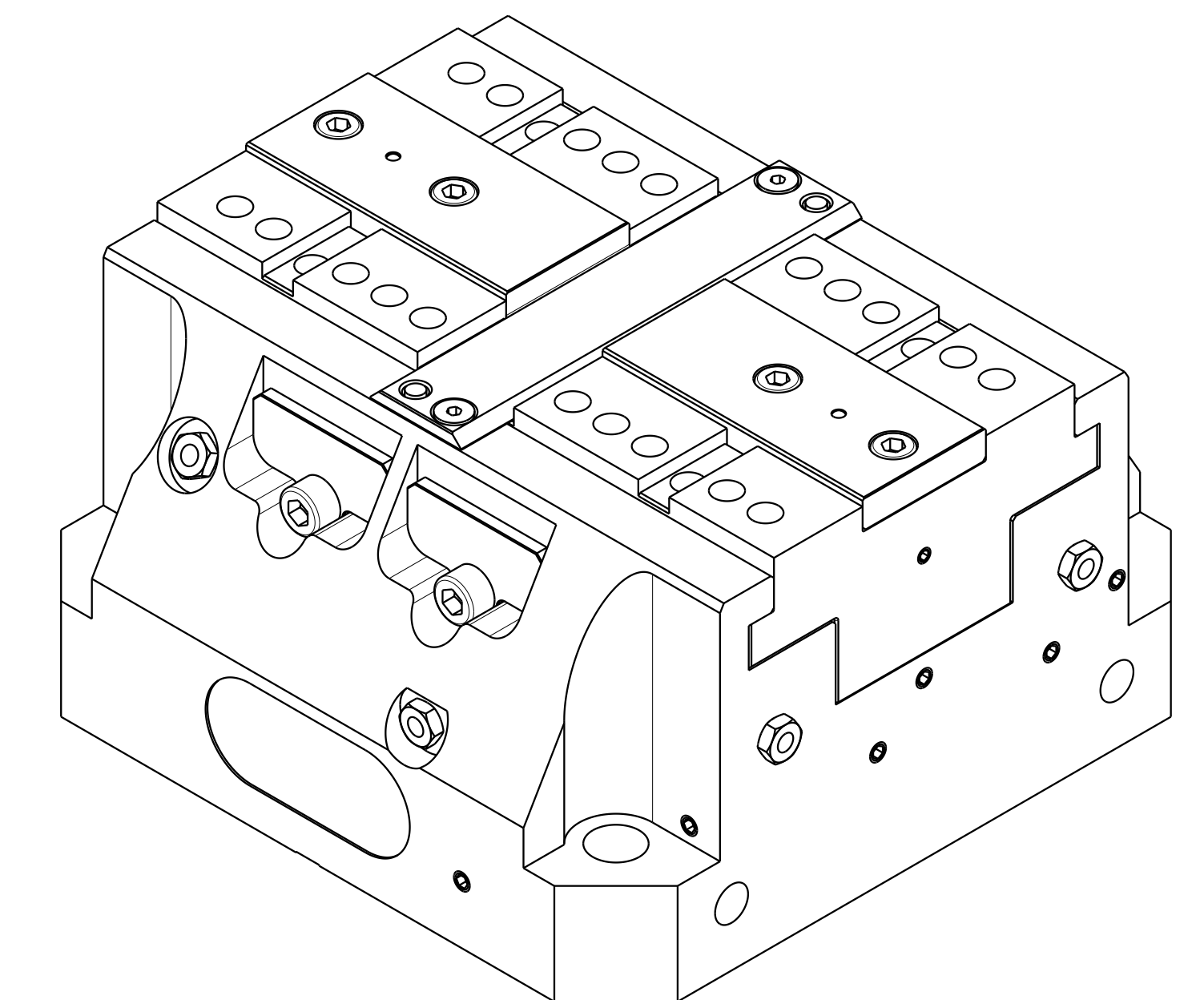
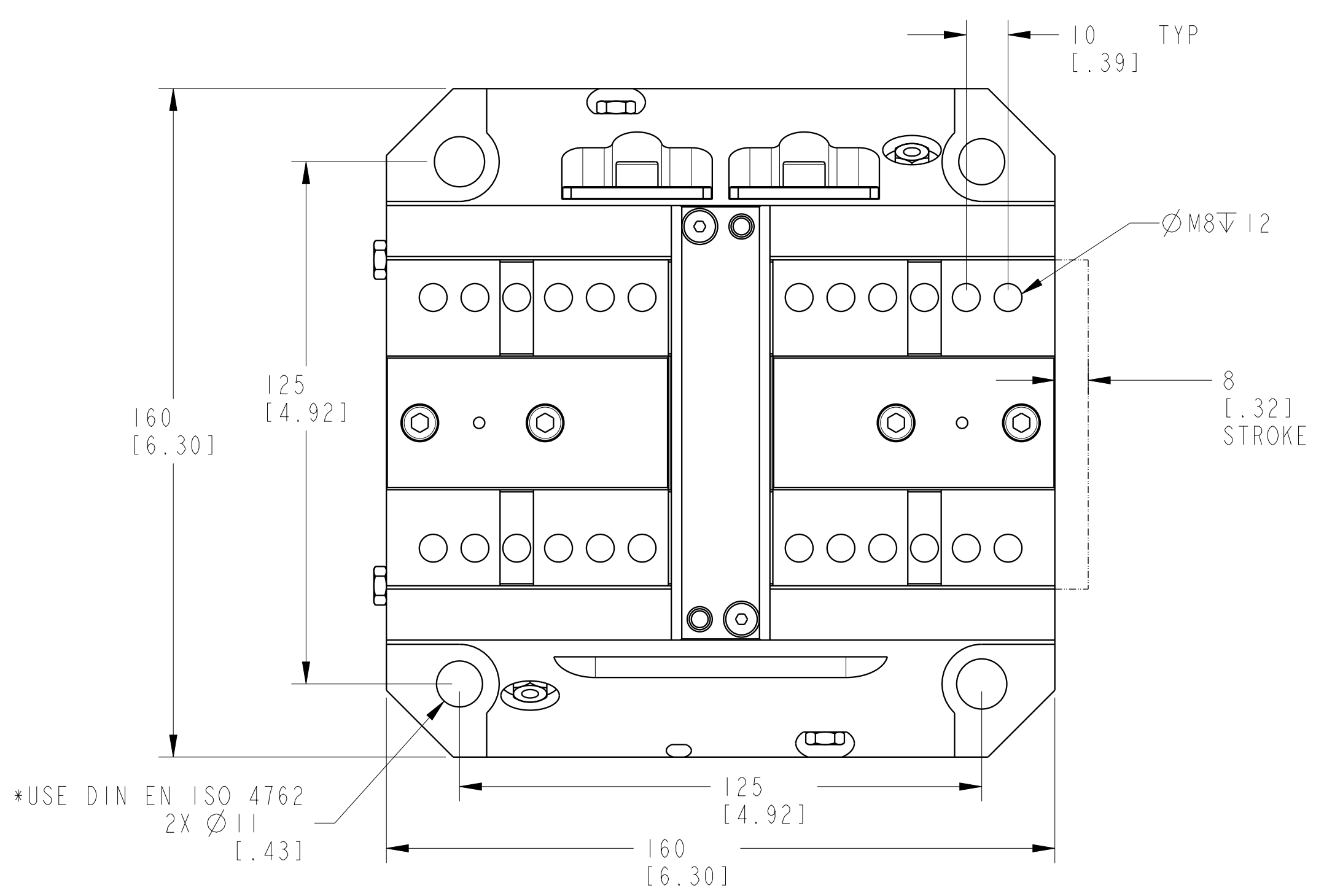
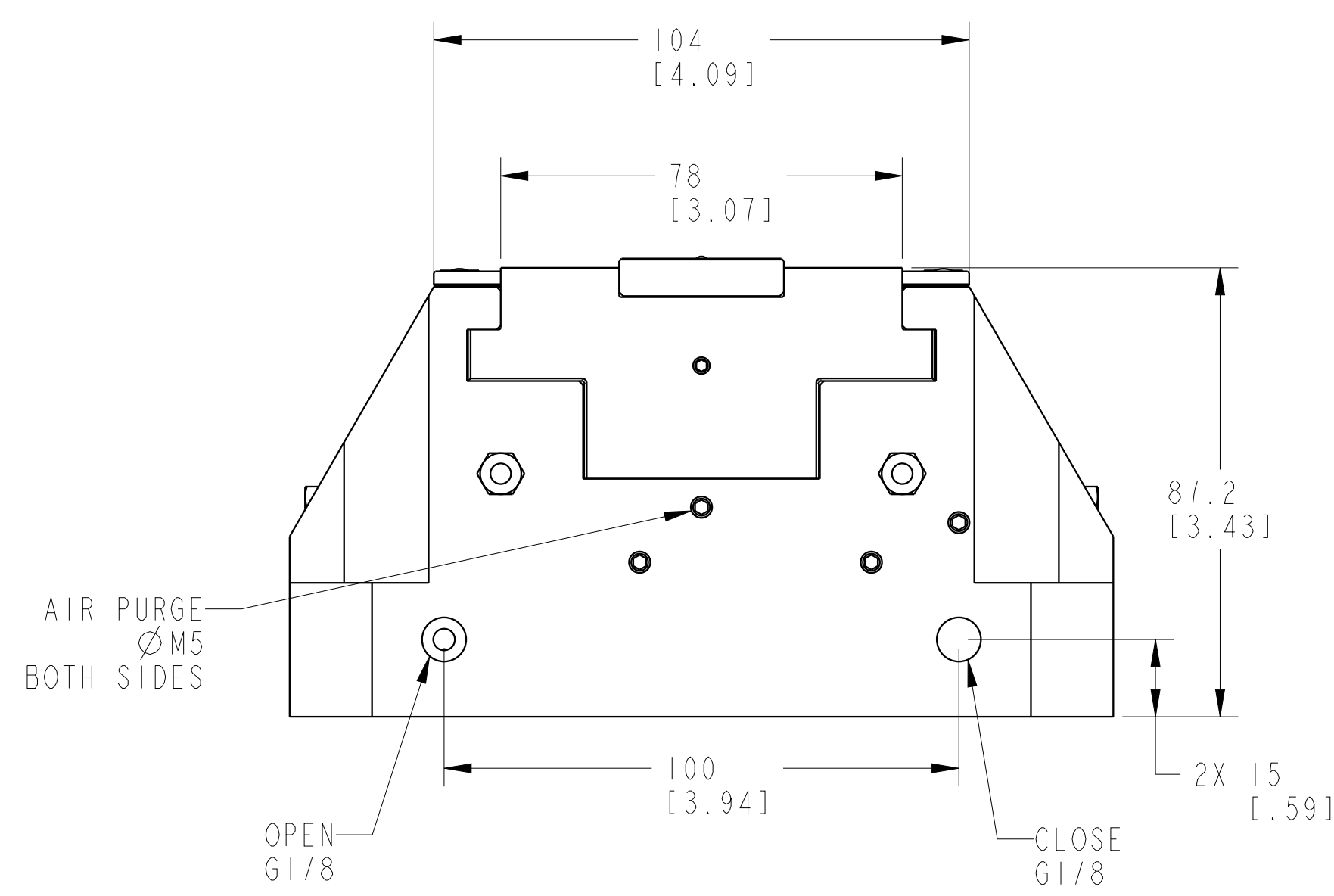
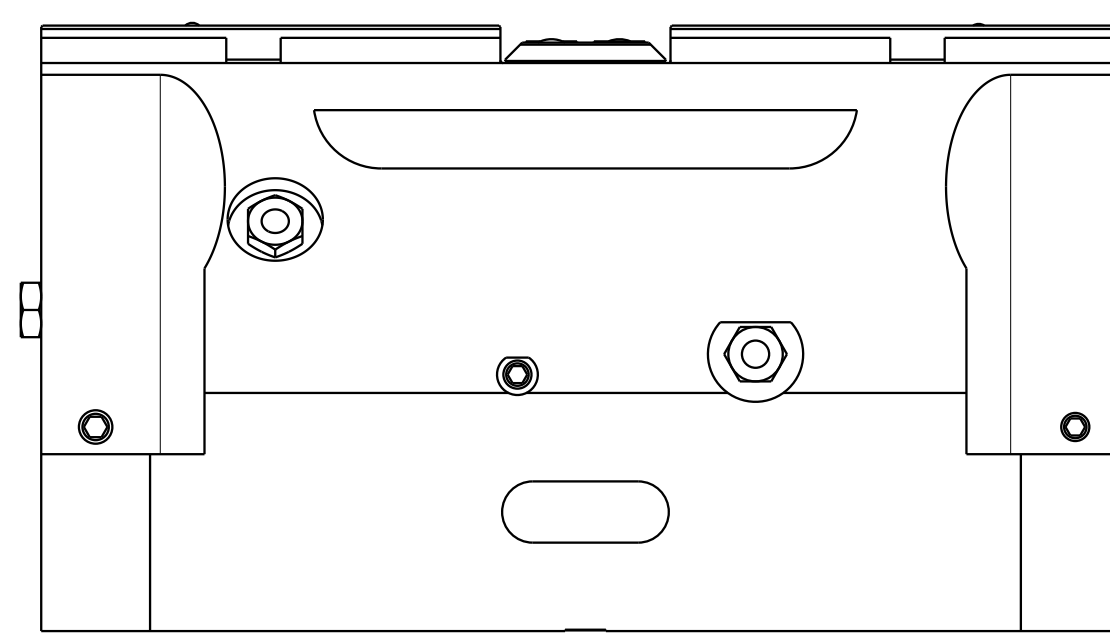


- MANIFOLD HOLES
 1: UNCLAMP (# ALTERNATE LOCATION ON REQUEST)
 2: CLAMP
 3: ***JAW 1 AIR SUPPLY
 4: **PNEUMATIC UNCLAMP MONITORING
 5: ***JAW 2 AIR SUPPLY
 6: **PNEUMATIC CLAMP MONITORING
 7: LUBRICATION
 8: AIR PURGE

**REQUIRES MB OPTION
 ***REQUIRES PC OPTION



ILCM-VCV-160-C1-ID REV B ECN5815



- *IF USING 4X DIN EN ISO 4762 BOLTS,
 2X DIN EN ISO 13337 SPRING PINS CAN BE USED.
 OTHERWISE USE 2X BOLTS AND 2X ISO 7379 SHOULDER BOLTS.
 *ACCURACY TO CLAMPING CENTER FOR MOUNTING OPTIONS:
 *SPRING PINS: +/-0.04
 *SHOULDER BOLTS: +/-0.02

CAD CONTROL DRAWING		
	VEKTEK, INC. 1334 E. SIXTH AVE. P.O. BOX 625 EMPORIA, KS. 66801 U.S.A.	

B	5815	RELEASE	AJT	10/8/25	VCV-160-C1-ID	A	WISE, CENTER, 250BAR, 160
REV	IN ACCORDANCE WITH ECN	EFFECTIVE DATE	REVISED BY	DATE	REFERENCE MODEL	REF REV	
DRW BY:	DRAWING STATUS: Released				TOLERANCES DO NOT APPLY	UNITS	SIZE
DATE:	PRODUCTION APPROVED FOR RELEASED STATUS ONLY				DIMENSIONS ARE NOMINAL	mm (inch)	D
							ILCM-VCV-160-C1-ID REV B