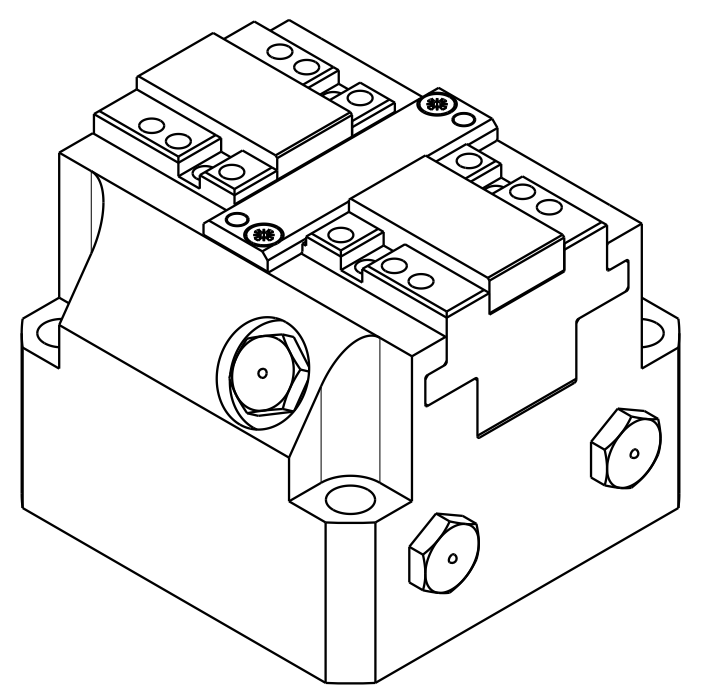
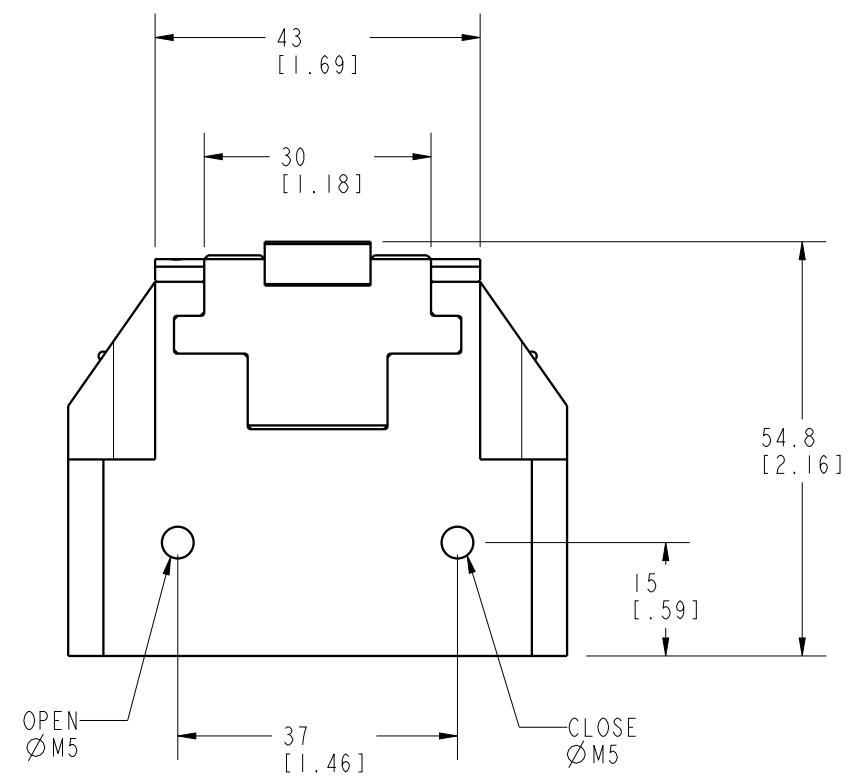
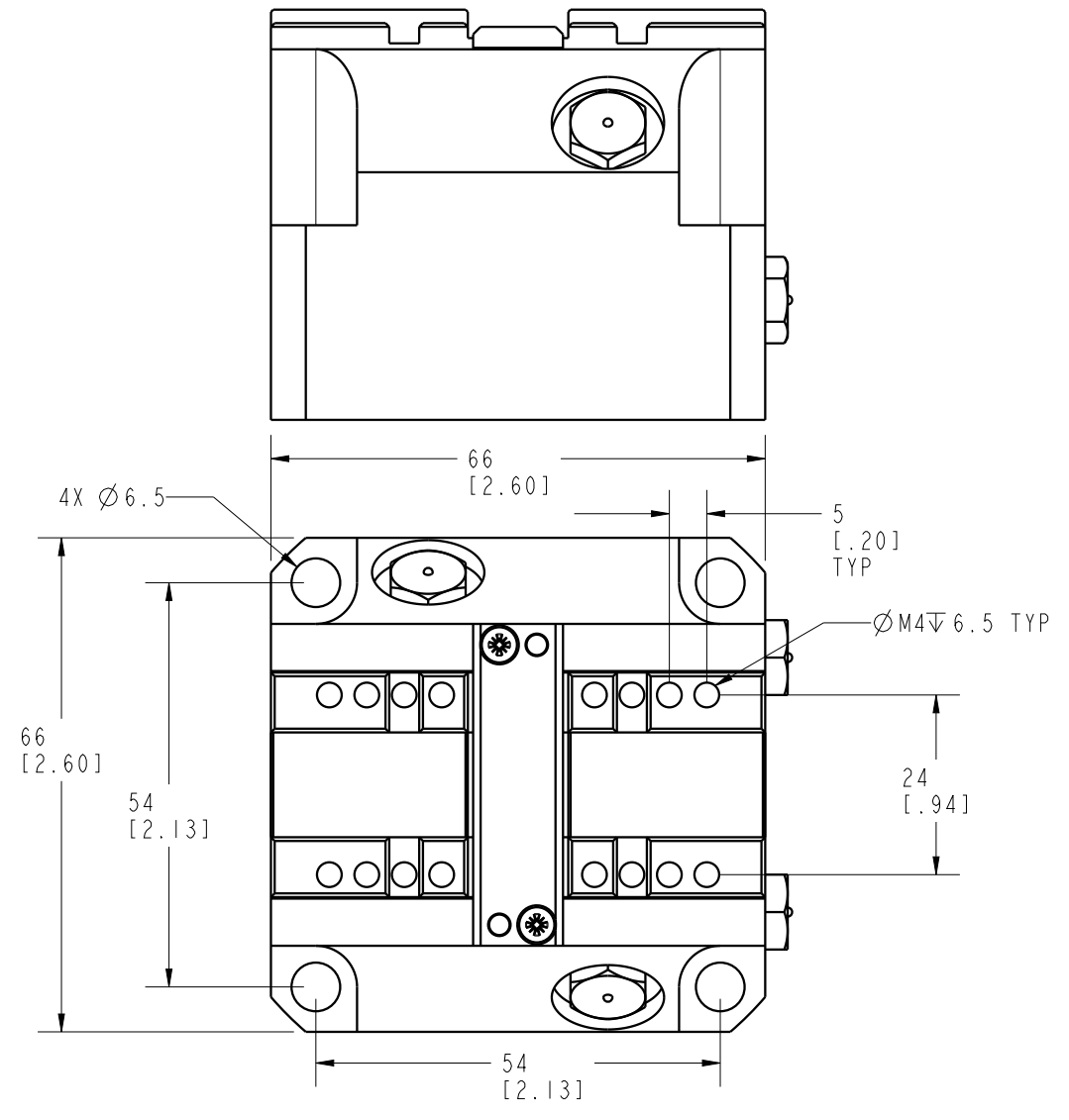


MANIFOLD MOUNT O-RINGS	
CLOSE/OPEN	PURGE/LUBRICATION
Ø 4x1	Ø 3.5x1



I LCM-VFB-66-C1-PN REV A ECN5231



**CAD CONTROL  
DRAWING**



A	5231	RELEASE	AJT	2/6/24	VFB-66-C1-PN	A	VISE, CENTER, 66, PNEU	
REV	IN ACCORDANCE WITH ECN	EFFECTIVE DATE	REVISED BY	DATE	REFERENCE MODEL	REF REV	*****	
DRW BY:	AJT	<b>DRAWING STATUS: Released</b>			TOLERANCES DO NOT APPLY	UNITS	SIZE	I LCM-VFB-66-C1-PN
DATE:	2/2/24	PRODUCTION APPROVED FOR RELEASED STATUS ONLY			DIMENSIONS ARE NOMINAL	mm [inch]	B	