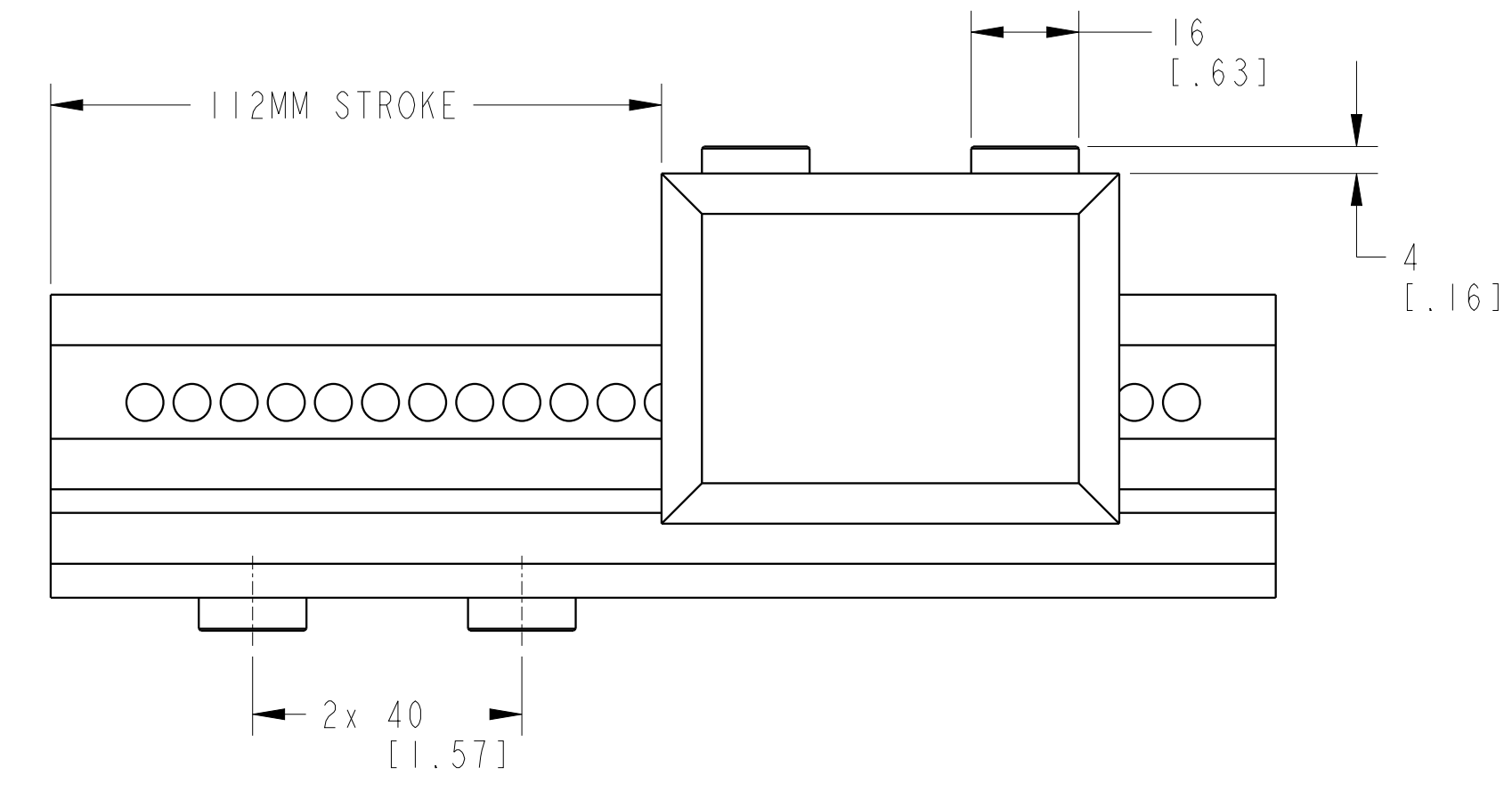


63
[2.48]

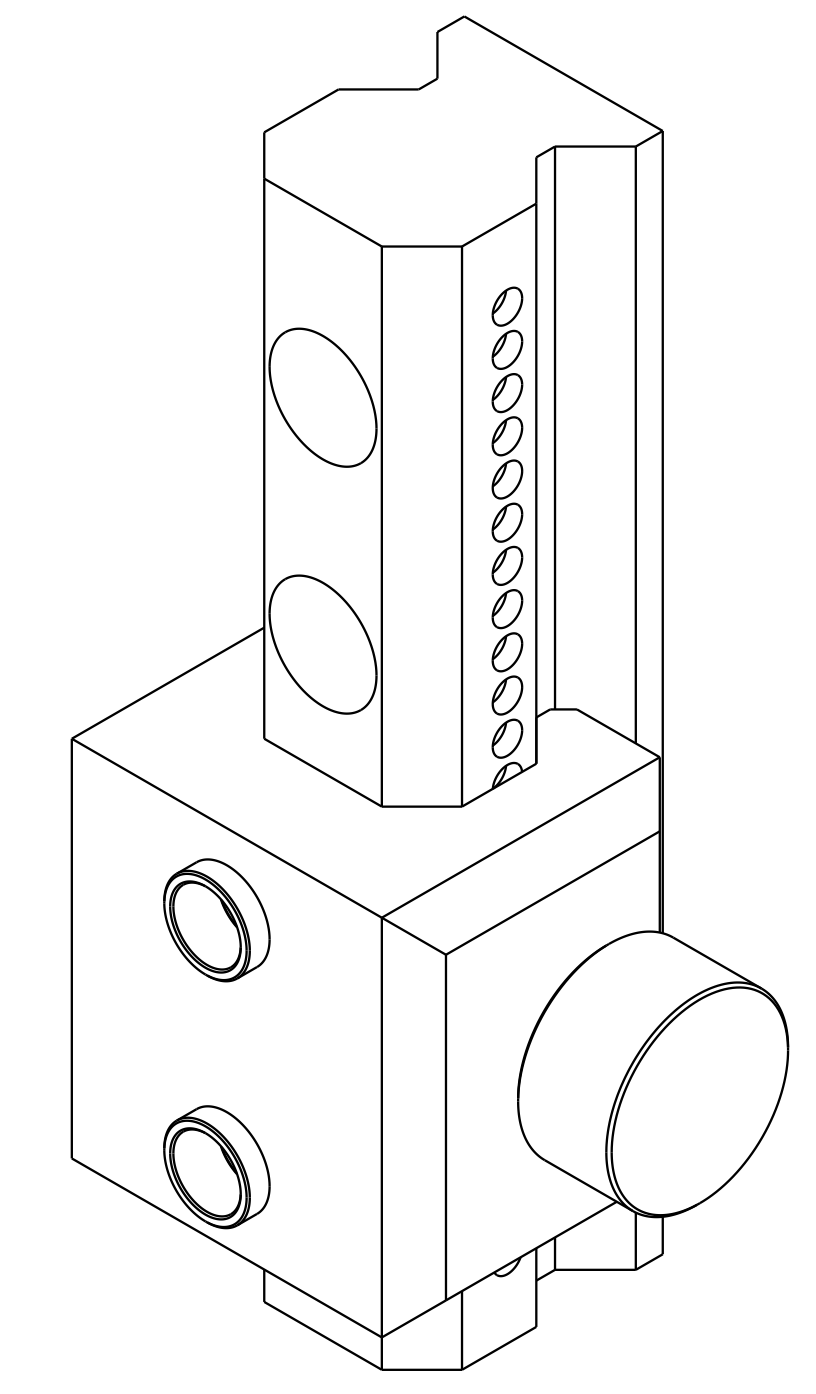


112MM STROKE

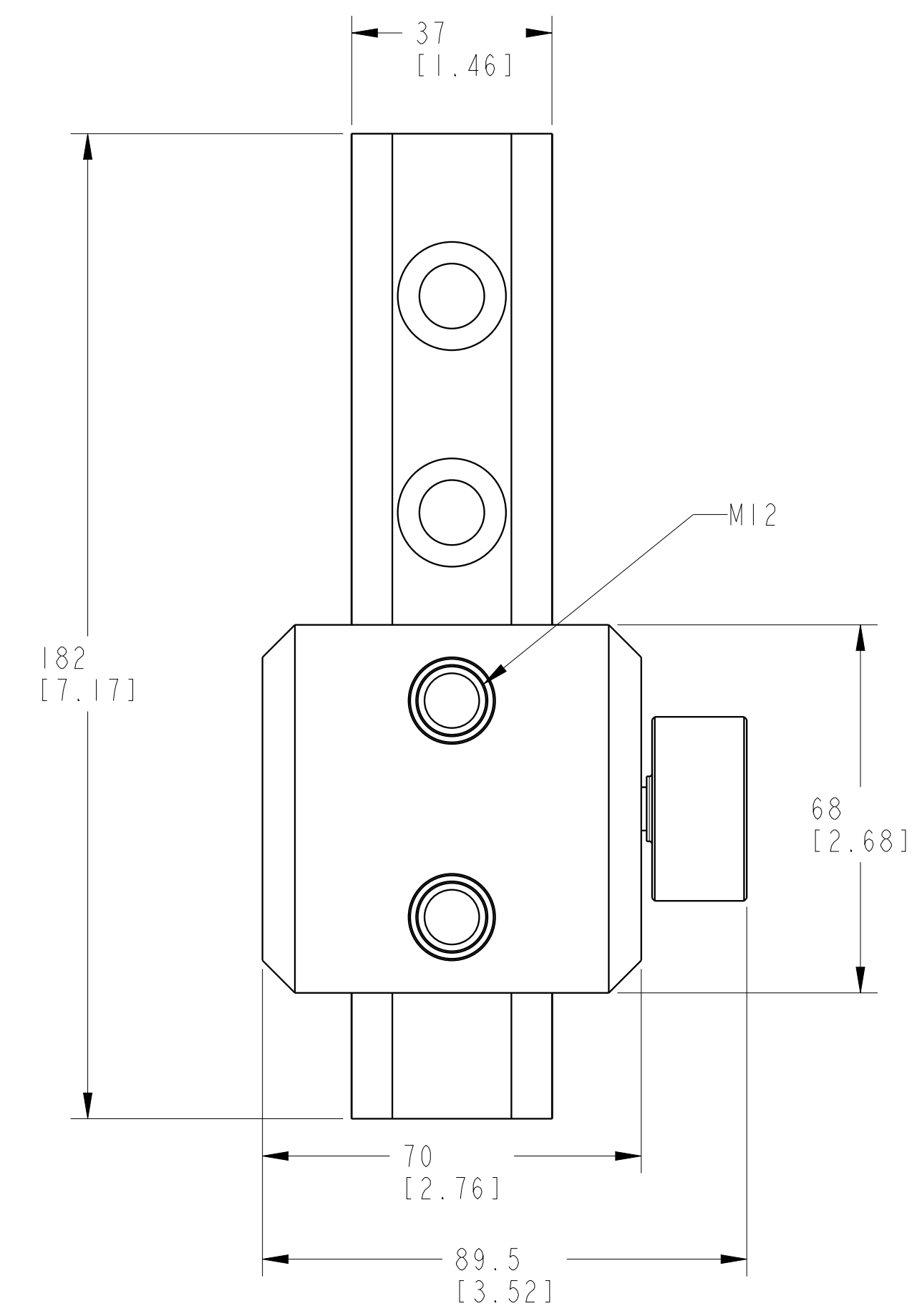
16
[.63]

4
[.16]

2x 40
[1.57]



I LCM-VUS-200 REV A ECN 5364



37
[1.46]

182
[7.17]

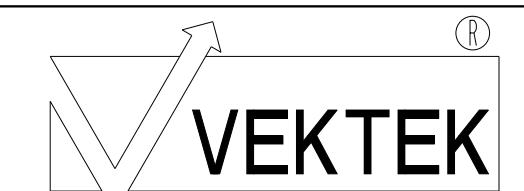
M12

68
[2.68]

70
[2.76]

89.5
[3.52]

**CAD CONTROL
DRAWING**



VEKTEK, INC.
1334 E. SIXTH AVE. P.O. BOX 625
EMPORIA, KS. 66801 U.S.A.

| | | | | |
|---------|------------------------|--|------------|--------|
| A | 5364 | RELEASE | AJT | 7/8/24 |
| REV | IN ACCORDANCE WITH ECN | EFFECTIVE DATE | REVISED BY | DATE |
| DRW BY: | AJT | DRAWING STATUS: Released | | |
| DATE: | 7/8/24 | PRODUCTION APPROVED FOR RELEASED STATUS ONLY | | |

| | | |
|---|--------------------|-------------------------------|
| VUS-200 | A | GRIPPER, JAW, ADJUSTABLE, 200 |
| REFERENCE MODEL | REF REV | ***** |
| TOLERANCES DO NOT APPLY DIMENSIONS ARE NOMINAL | UNITS mm (inch) | SIZE D |

| | |
|---------------|----------|
| I LCM-VUS-200 | REV A |
|---------------|----------|