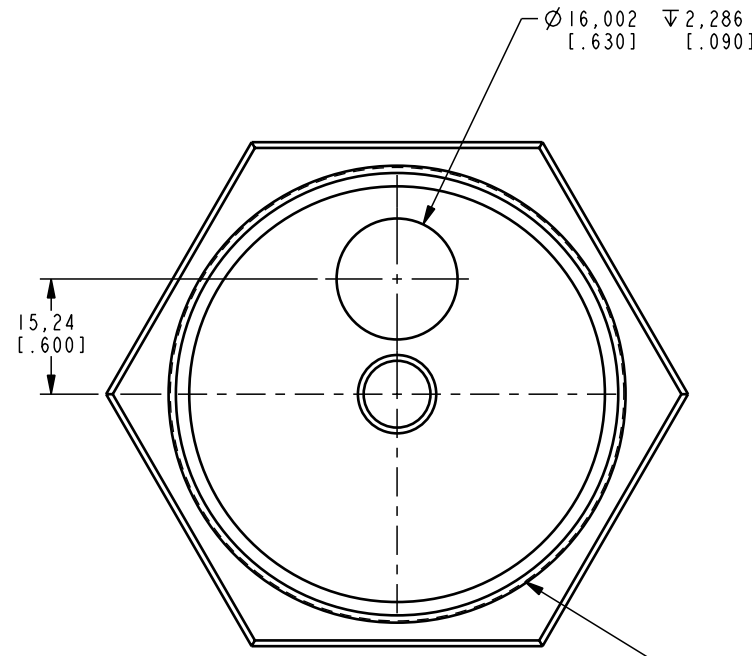


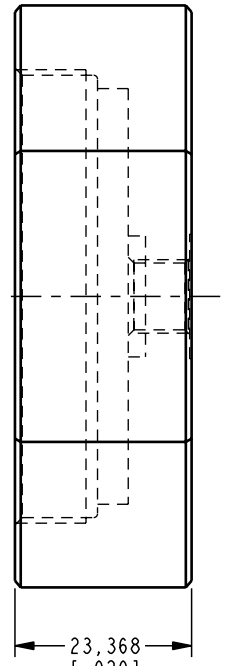
1 2 3 4

D
C
B
A

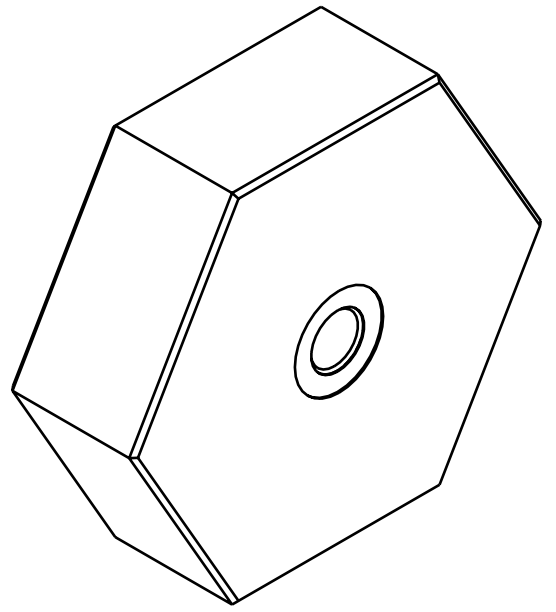
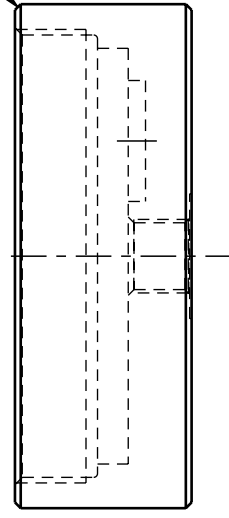
D
C
B
A



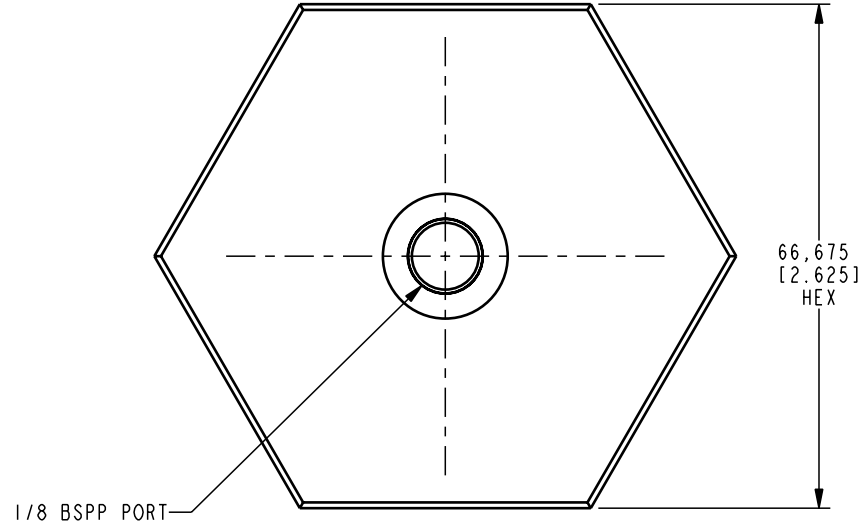
2 1/4-16 UN-2B ∇ 9,398
[.370]
MINOR ∇ 58,522 ∇ 10,922
[2.304] [.430]
 ∇ 54,991 ∇ 14,986
[2.165] [.590]



45° X 0,76
[.03]
TYP



ILCM40987247 REV A ECN 1441



66,675
[2.625]
HEX

1/8 BSPP PORT

**CAD CONTROL
DRAWING**



VEKTEK, INC.
1334 E. SIXTH AVE. P.O. BOX 625
EMPORIA, KS. 66801 U.S.A.

A	1441	RELEASE	K. ROEMER	02-24-06	40987247	E	CAP, FEEDER, WS, FA, 4000		
REV	IN ACCORDANCE WITH ECN	EFFECTIVE DATE	REVISED BY	DATE	REFERENCE MODEL	REF REV	*****		
DRW BY:	K. ROEMER	DRAWING STATUS: Released			TOLERANCES DO NOT APPLY	UNITS	SIZE	ILCM40987247	REV A
DATE:	08-23-05	PRODUCTION APPROVED FOR RELEASED STATUS ONLY			DIMENSIONS ARE NOMINAL	mm [inch]	B		

FORM FEG036, Rev. A

SHEET 1 OF 1