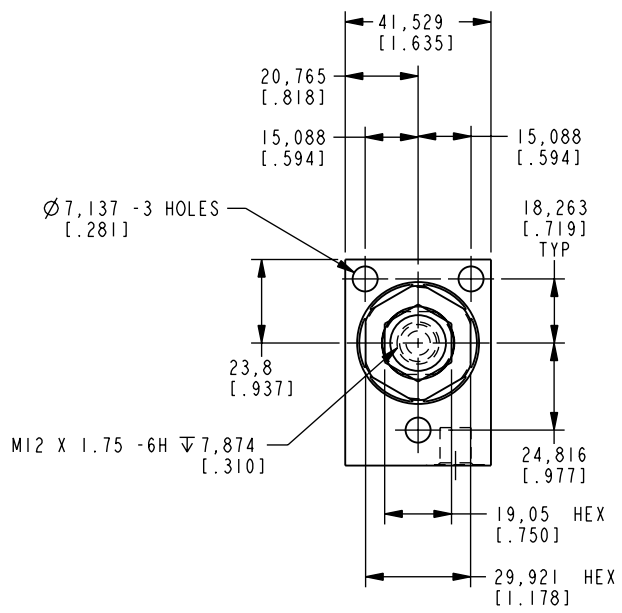
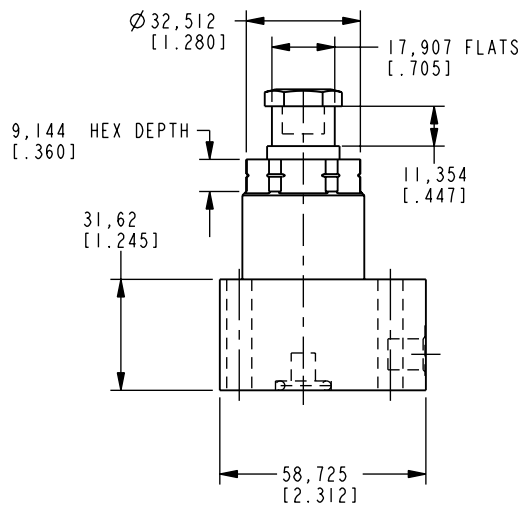
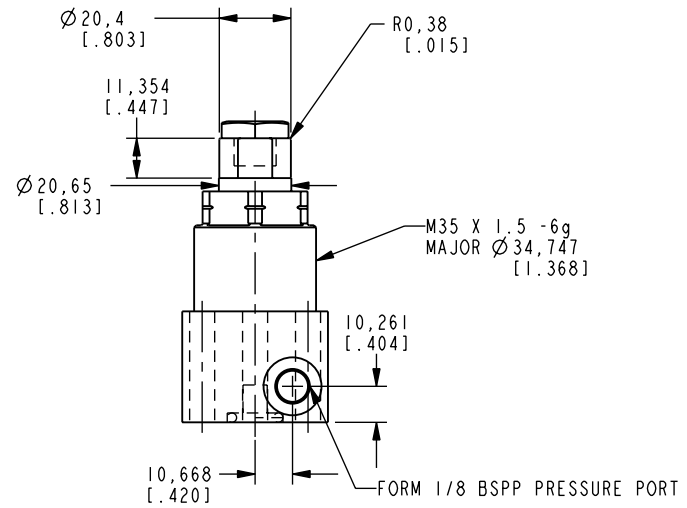
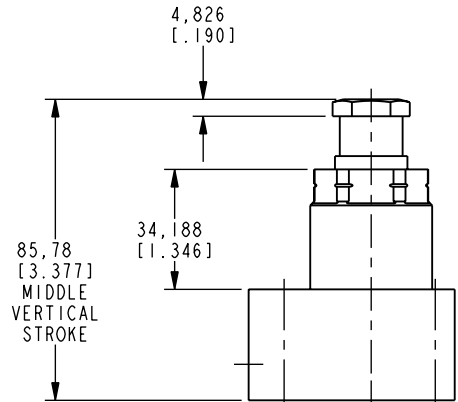


SAE 2 O-RING PRESSURE PORT

ILCM41007003 REV C ECN 2447



CAD CONTROL DRAWING



VEKTEK, INC.  
1334 E. SIXTH AVE. P.O. BOX 625  
EMPORIA, KS. 66801 U.S.A.

REV	2447	RELEASE	JDW	09/06/12	41007003	D	WS, FA, BM, 11 Kn
REV	IN ACCORDANCE WITH ECN	EFFECTIVE DATE	REVISED BY	DATE	REFERENCE MODEL	REF REV	
DRW BY:	JDW	DRAWING STATUS: <b>Released</b>			TOLERANCES DO NOT APPLY	UNITS	SIZE
DATE:	10-24-07	PRODUCTION APPROVED FOR RELEASED STATUS ONLY			DIMENSIONS ARE NOMINAL	mm [inch]	D ILCM41007003

FORM FEG036, Rev. B