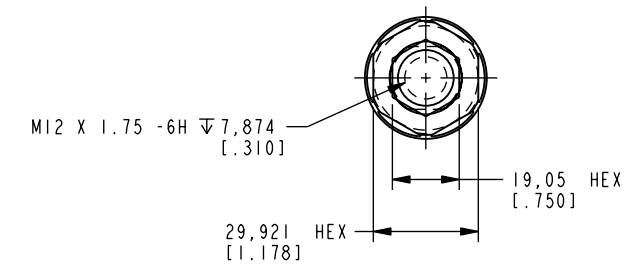
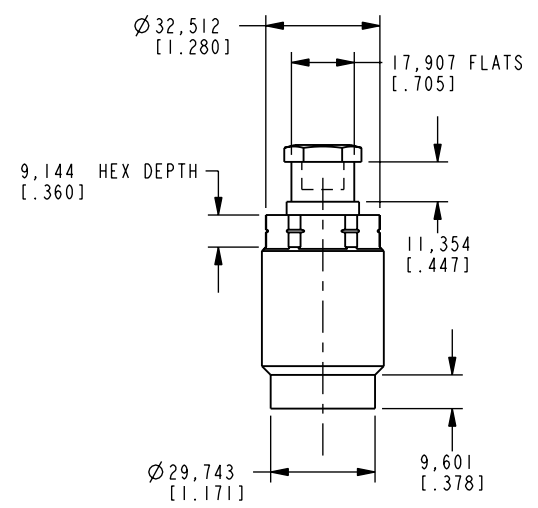
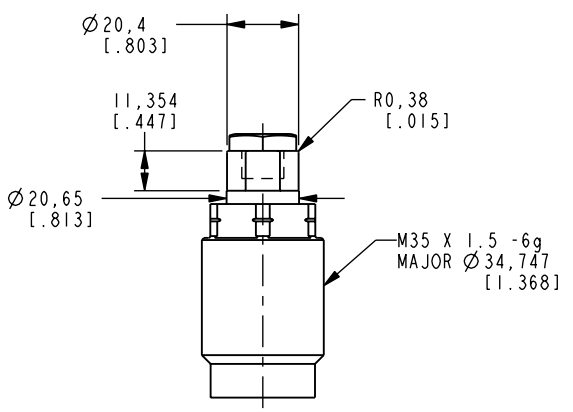
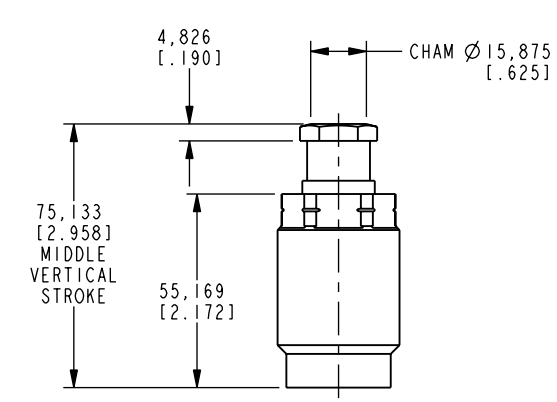


I LCM41007103 REV B ECN 2447



CAD CONTROL DRAWING



VEKTEK, INC.
1334 E. SIXTH AVE. P.O. BOX 625
EMPORIA, KS. 66801 U.S.A.

| | | | | | | | |
|---------|------------------------|--|------------|----------|-------------------------|-----------|-------------------|
| B | 2447 | RELEASE | JDW | 10/18/12 | 41007103 | E | WS, FA, CM, 11 Kn |
| REV | IN ACCORDANCE WITH ECN | EFFECTIVE DATE | REVISED BY | DATE | REFERENCE MODEL | REF REV | |
| DRW BY: | JDW | DRAWING STATUS: Released | | | TOLERANCES DO NOT APPLY | UNITS | SIZE |
| DATE: | 10-24-07 | PRODUCTION APPROVED FOR RELEASED STATUS ONLY | | | DIMENSIONS ARE NOMINAL | mm [inch] | D ILCM41007103 |
| | | | | | | | REV B |

FORM FEG036, Rev. B