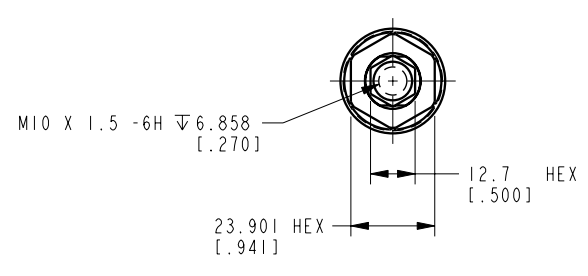
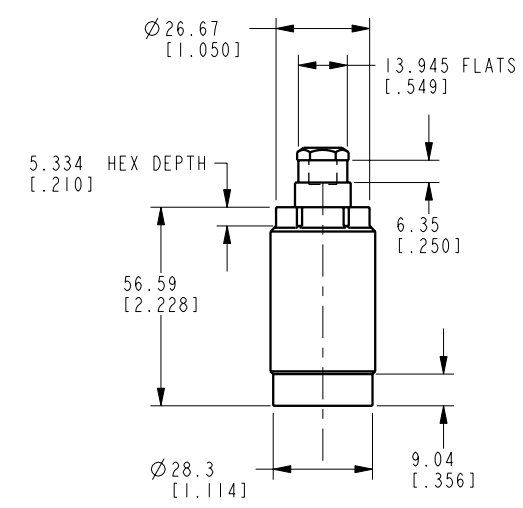
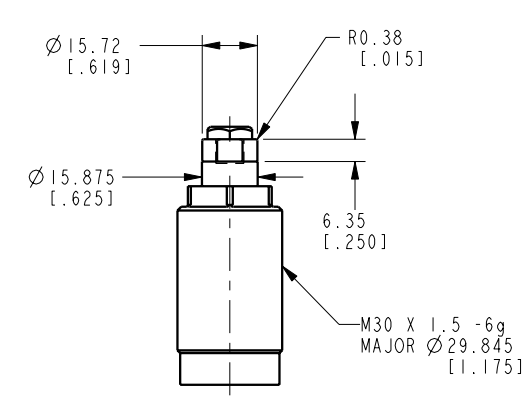
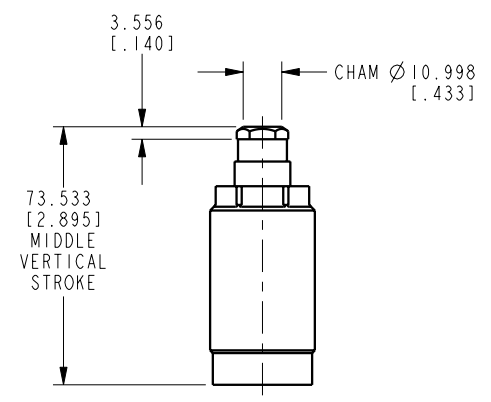



ILCM41017112 REV A ECN 2603



**CAD CONTROL
DRAWING**



VEKTEK, INC.
1334 E. SIXTH AVE. P.O. BOX 625
EMPORIA, KS. 66801 U.S.A.

| | | | | | | | |
|---------|------------------------|--|------------|--------|-------------------------|---------|--------------------|
| A | 2603 | RELEASE | DLG | 1/7/14 | 41017112 | A | WS, FA, CM, 7,3 Kn |
| REV | IN ACCORDANCE WITH ECN | EFFECTIVE DATE | REVISED BY | DATE | REFERENCE MODEL | REF REV | |
| DRW BY: | JDW | DRAWING STATUS: Released | | | TOLERANCES DO NOT APPLY | SIZE | ILCM41017112 |
| DATE: | 09/04/12 | PRODUCTION APPROVED FOR RELEASED STATUS ONLY | | | DIMENSIONS ARE NOMINAL | D | REV A |