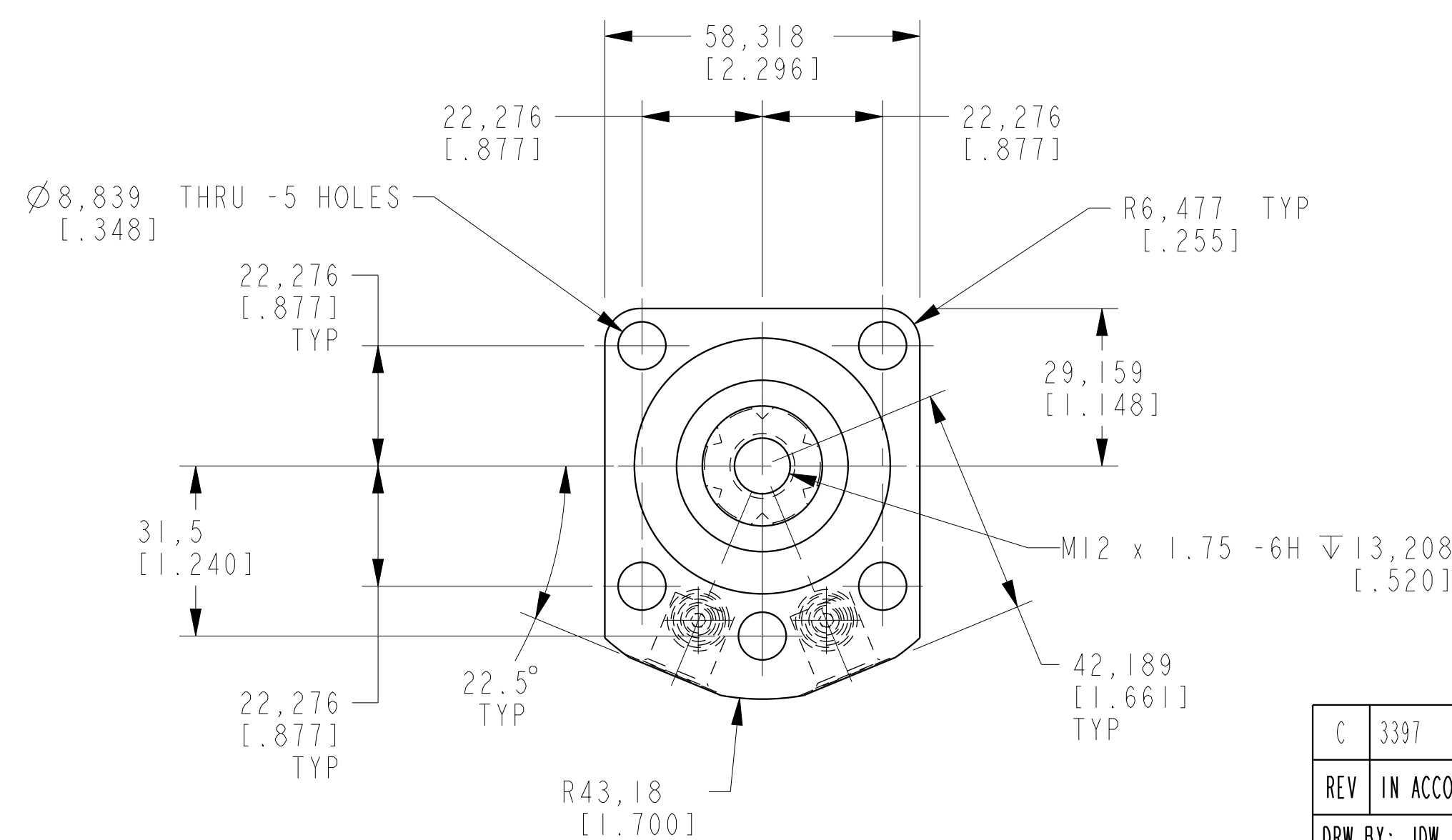
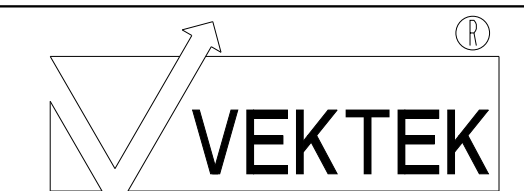


ILCM41421123 REV C ECN 3397



CAD CONTROL
DRAWING



VEKTEK, INC.
1334 E. SIXTH AVE. P.O. BOX 625
EMPORIA, KS. 66801 U.S.A.

C	3397	RELEASE	GAR	1/16/18
REV	IN ACCORDANCE WITH ECN	EFFECTIVE DATE	REVISED BY	DATE
DRW BY:	JDW	DRAWING STATUS: Released		
DATE:	1/11/12	PRODUCTION APPROVED FOR RELEASED STATUS ONLY		

41421123	B	SC, BF, TC, 11.6 KN, DA, RH, LS
TOLERANCES DO NOT APPLY DIMENSIONS ARE NOMINAL	UNITS mm (inch)	SIZE D

ILCM41421123	REV C
--------------	----------