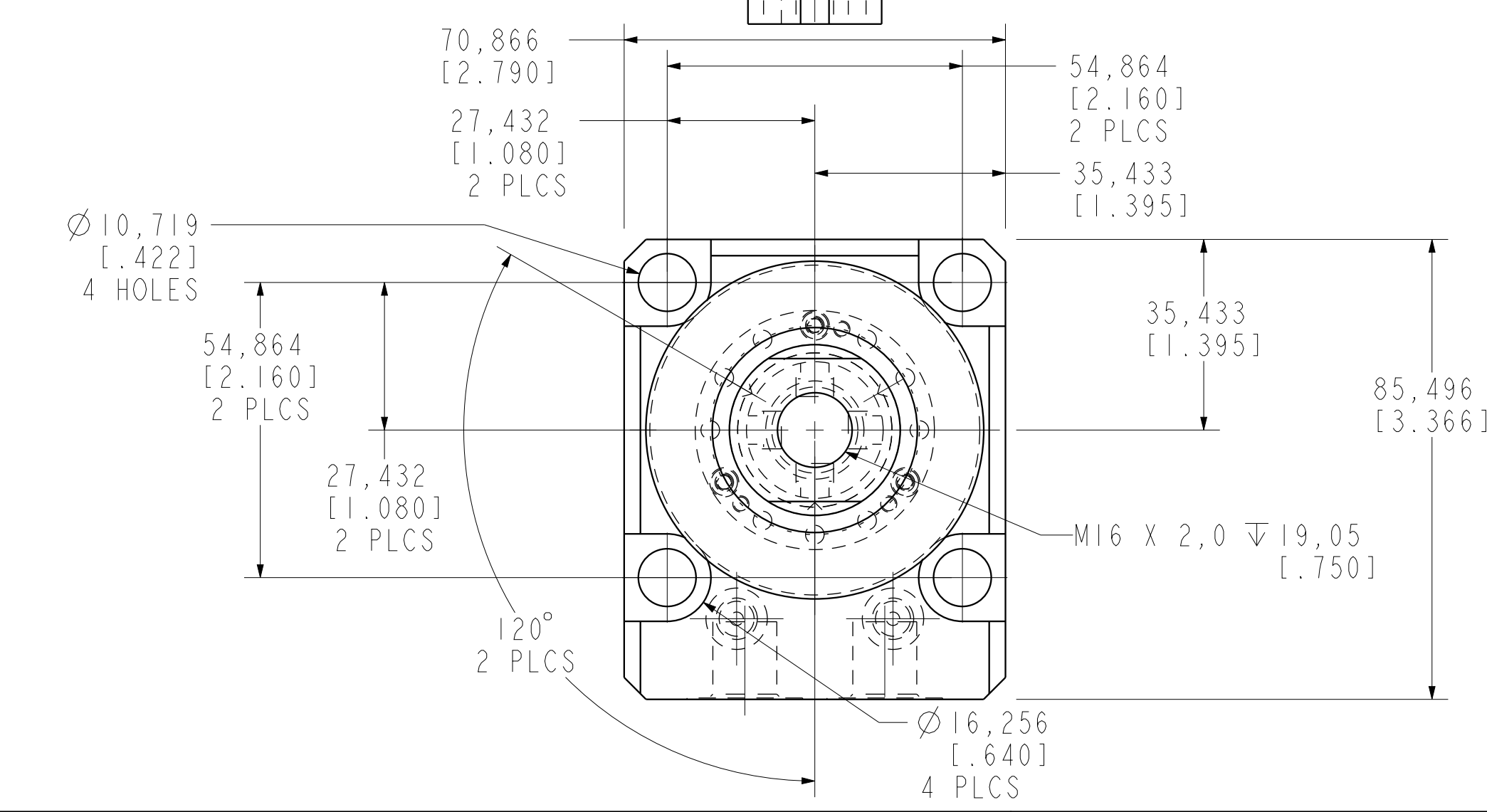


ILCM41422226PS REV B ECN 4191



CAD CONTROL DRAWING				 VEKTEK, INC. 1334 E. SIXTH AVE. P.O. BOX 625 EMPORIA, KS. 66801 U.S.A.	
B	4191	RELEASE	JDW	05/22/20	41422226PS
REV	IN ACCORDANCE WITH ECN	EFFECTIVE DATE	REVISED BY	DATE	REFERENCE MODEL
DRW BY: JDW	DRAWING STATUS: Released				SIZE D
DATE: 03/27/19	PRODUCTION APPROVED FOR RELEASED STATUS ONLY				ILCM41422226PS
TOLERANCES DO NOT APPLY DIMENSIONS ARE NOMINAL					REV B