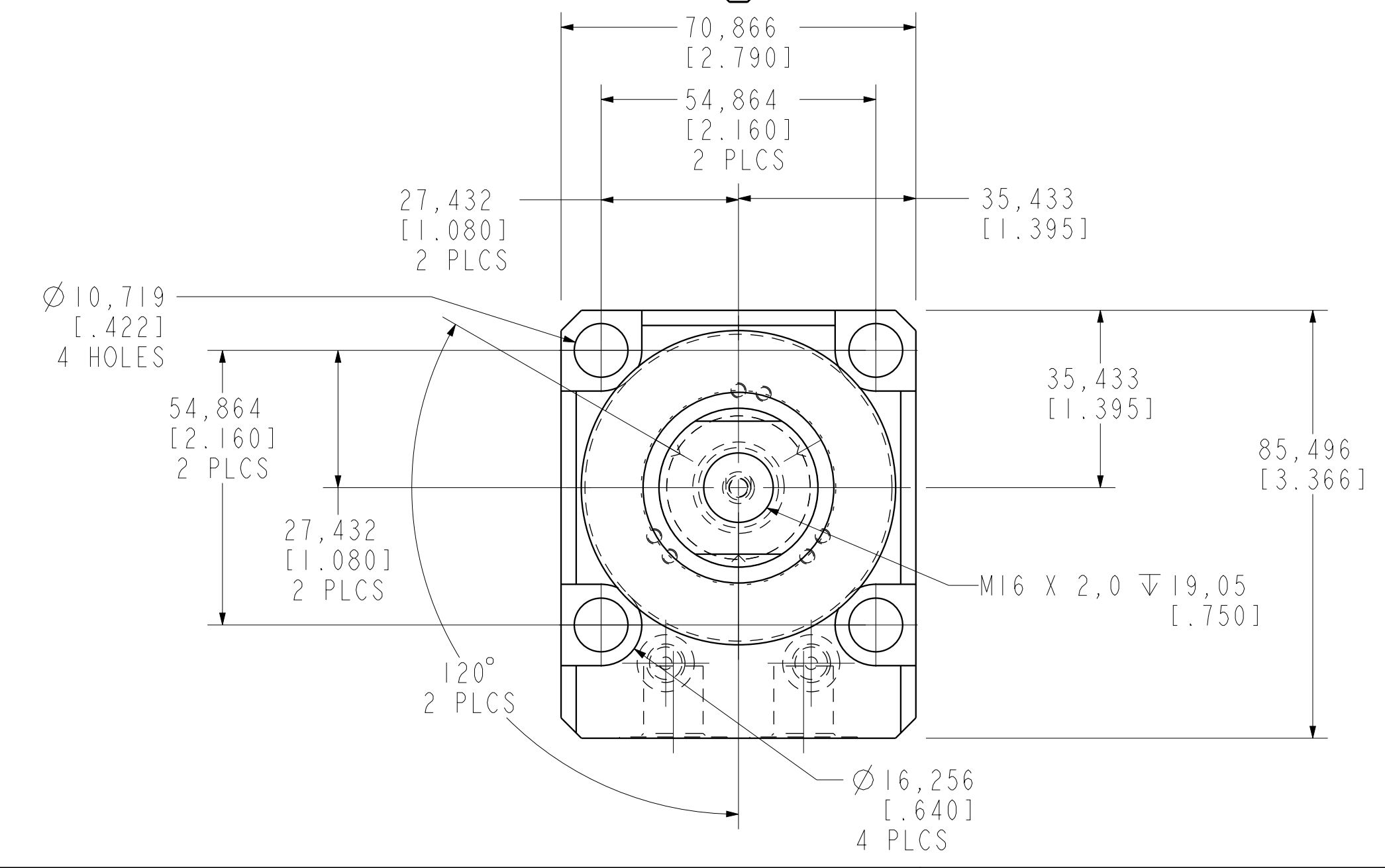


ILCM4142227PR REV A ECN 3746



CAD CONTROL DRAWING			
		VEKTEK, INC. 1334 E. SIXTH AVE. P.O. BOX 625 EMPORIA, KS. 66801 U.S.A.	
A	3746	RELEASE	JDW
REV	IN ACCORDANCE WITH ECN	EFFECTIVE DATE	REVISED BY
DATE:	03/27/19		
DRAWING STATUS: Released		TOLERANCES DO NOT APPLY	
PRODUCTION APPROVED FOR RELEASED STATUS ONLY		DIMENSIONS ARE NOMINAL	
4142227PR	A	SC, LP, BF, TC, 22KN, DA, LH, PR, LS	SIZE D
ILCM4142227PR		REV A	