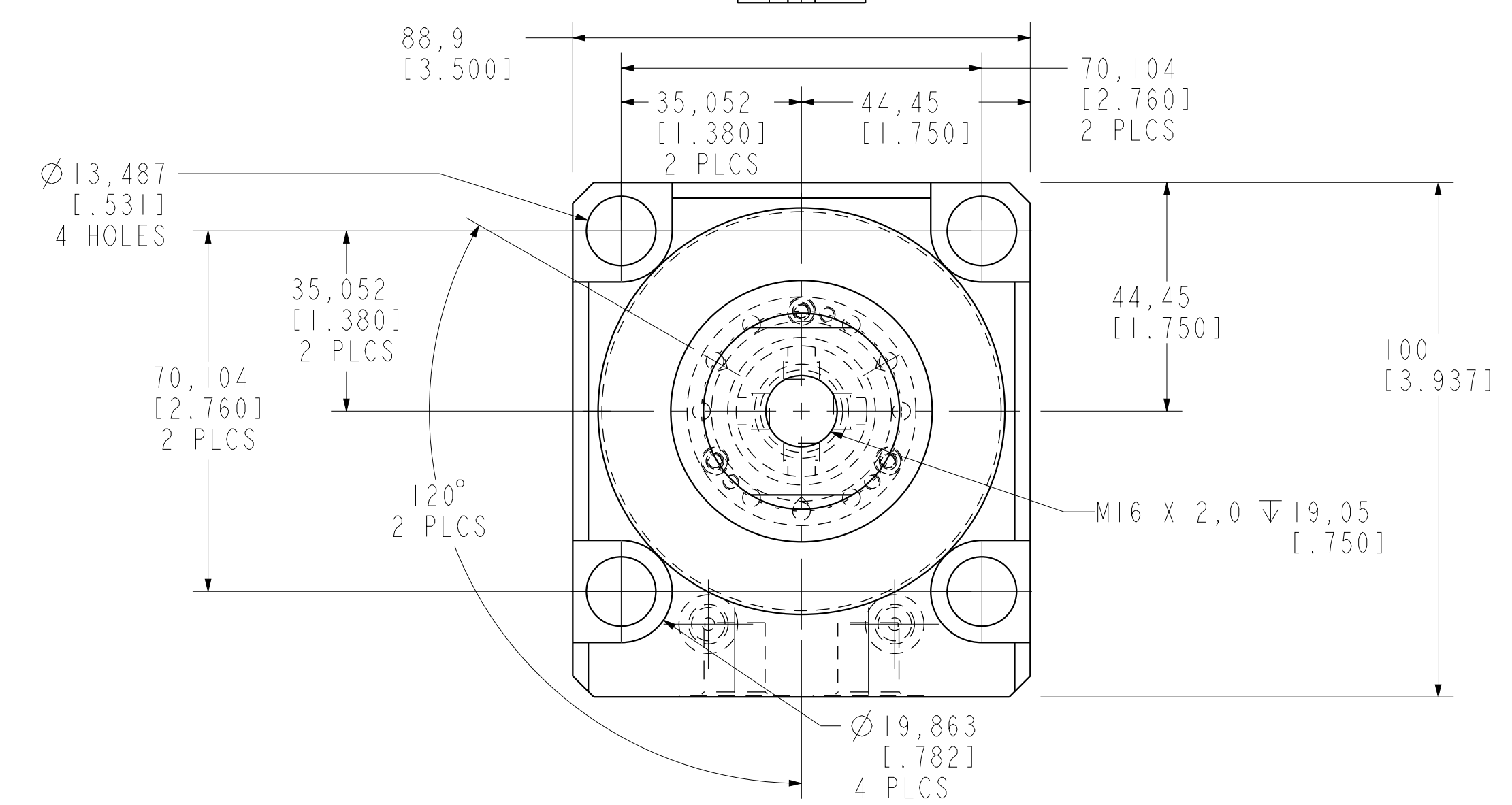


I LCM41423322PS REV C ECN 4191



|                            |  |  |  |
|----------------------------|--|--|--|
| <b>CAD CONTROL DRAWING</b> |  |  |  |
|                            |  | VEKTEK, INC.<br>1334 E. SIXTH AVE. P.O. BOX 625<br>EMPORIA, KS. 66801 U.S.A. |  |

|         |                        |  |            |          |                         |           |                                  |
|---------|------------------------|--|------------|----------|-------------------------|-----------|----------------------------------|
| C       | 4191                   | RELEASE                                      | JDW        | 05/22/20 | 41423322PS              | A         | SC, LP, BF, TC, 33KN, DA, LH, PS |
| REV     | IN ACCORDANCE WITH ECN | EFFECTIVE DATE                               | REVISED BY | DATE     | REFERENCE MODEL         | REF REV   |                                  |
| DRW BY: | JDW                    | <b>DRAWING STATUS: Released</b>              |            |          | TOLERANCES DO NOT APPLY | UNITS     | SIZE                             |
| DATE:   | 07/07/14               | PRODUCTION APPROVED FOR RELEASED STATUS ONLY |            |          | DIMENSIONS ARE NOMINAL  | mm (inch) | D                                |
|         |                        |  |            |          | I LCM41423322PS         | REV       | C                                |