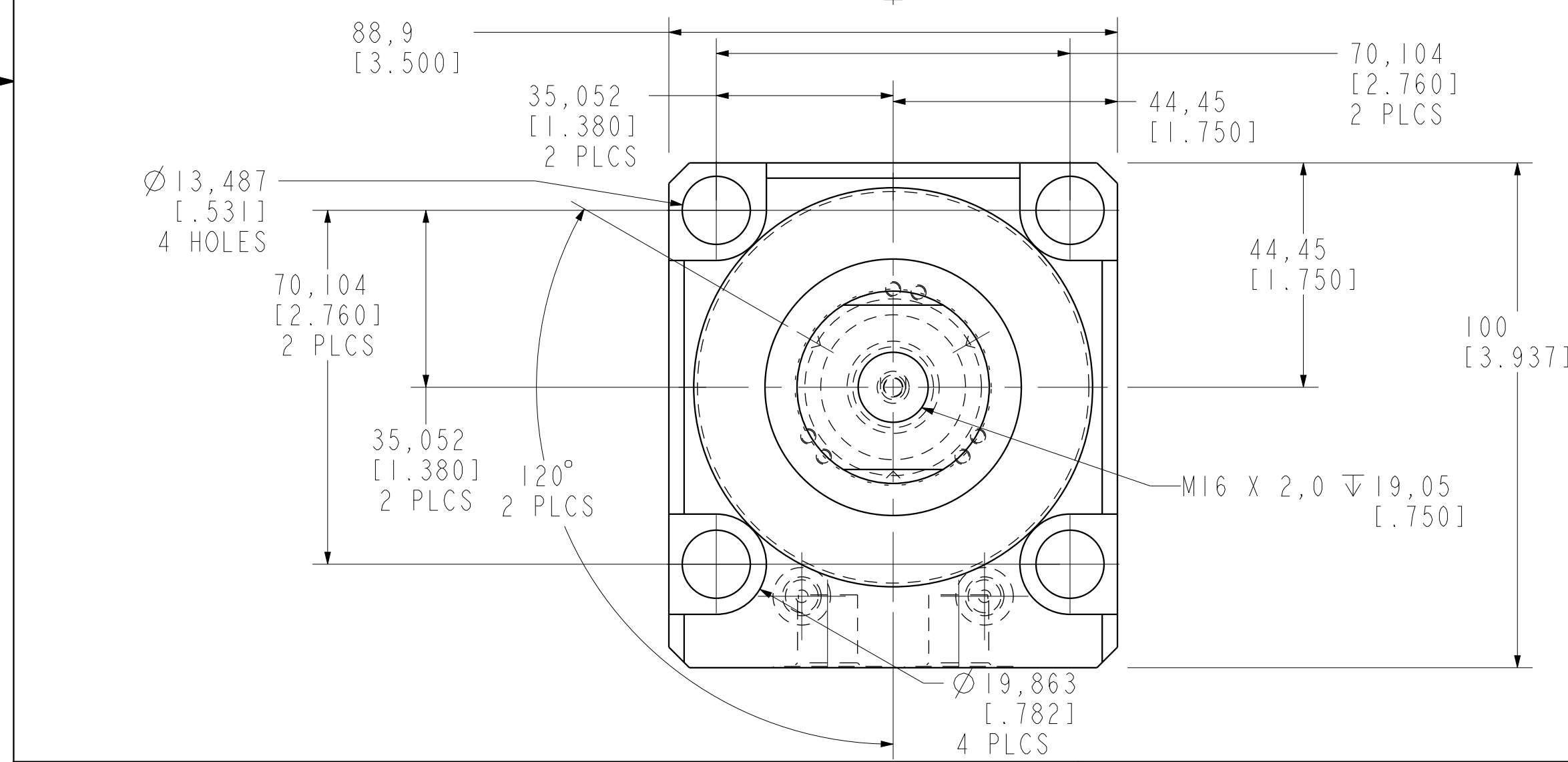


ILCM41423327PR REV A ECN 3746



CAD CONTROL DRAWING			
		VEKTEK, INC. 1334 E. SIXTH AVE. P.O. BOX 625 EMPORIA, KS. 66801 U.S.A.	
A 3746	RELEASE	JDW	03/27/19
REV IN ACCORDANCE WITH ECN	EFFECTIVE DATE	REVISED BY	DATE
DRW BY: JDW	DRAWING STATUS: Released		
DATE: 03/27/19	PRODUCTION APPROVED FOR RELEASED STATUS ONLY		
41423327PR	A	SC, LP, BF, TC, 33KN, DA, LH, PR, LS	REV A
TOLERANCES DO NOT APPLY DIMENSIONS ARE NOMINAL		SIZE D	ILCM41423327PR
		FORM FEG036, Rev. B	