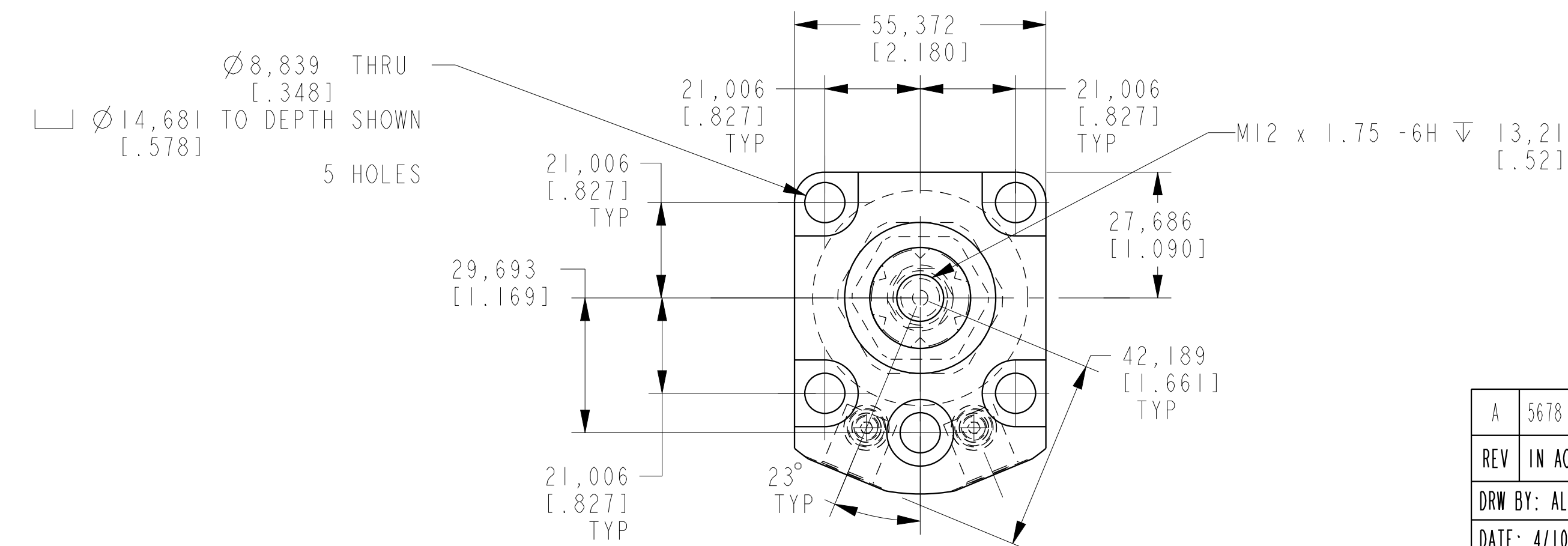


I LCM41461123US REV A ECN 5678



**CAD CONTROL DRAWING**

VEKTEK, INC.  
1334 E. SIXTH AVE. P.O. BOX 625  
EMPORIA, KS. 66801 U.S.A.

A	5678	RELEASE	ALS	4/7/25	41461123US	A	SC, TF, TC, 11.6 KN, DA, RH, LS, US
REV	IN ACCORDANCE WITH ECN	EFFECTIVE DATE	REVISED BY	DATE	REFERENCE MODEL	REF REV	
DRW BY:	ALS	DRAWING STATUS: <b>Released</b>			TOLERANCES DO NOT APPLY	UNITS	SIZE
DATE:	4/10/25	PRODUCTION APPROVED FOR RELEASED STATUS ONLY			DIMENSIONS ARE NOMINAL	mm (inch)	D
					I LCM41461123US	REV	A