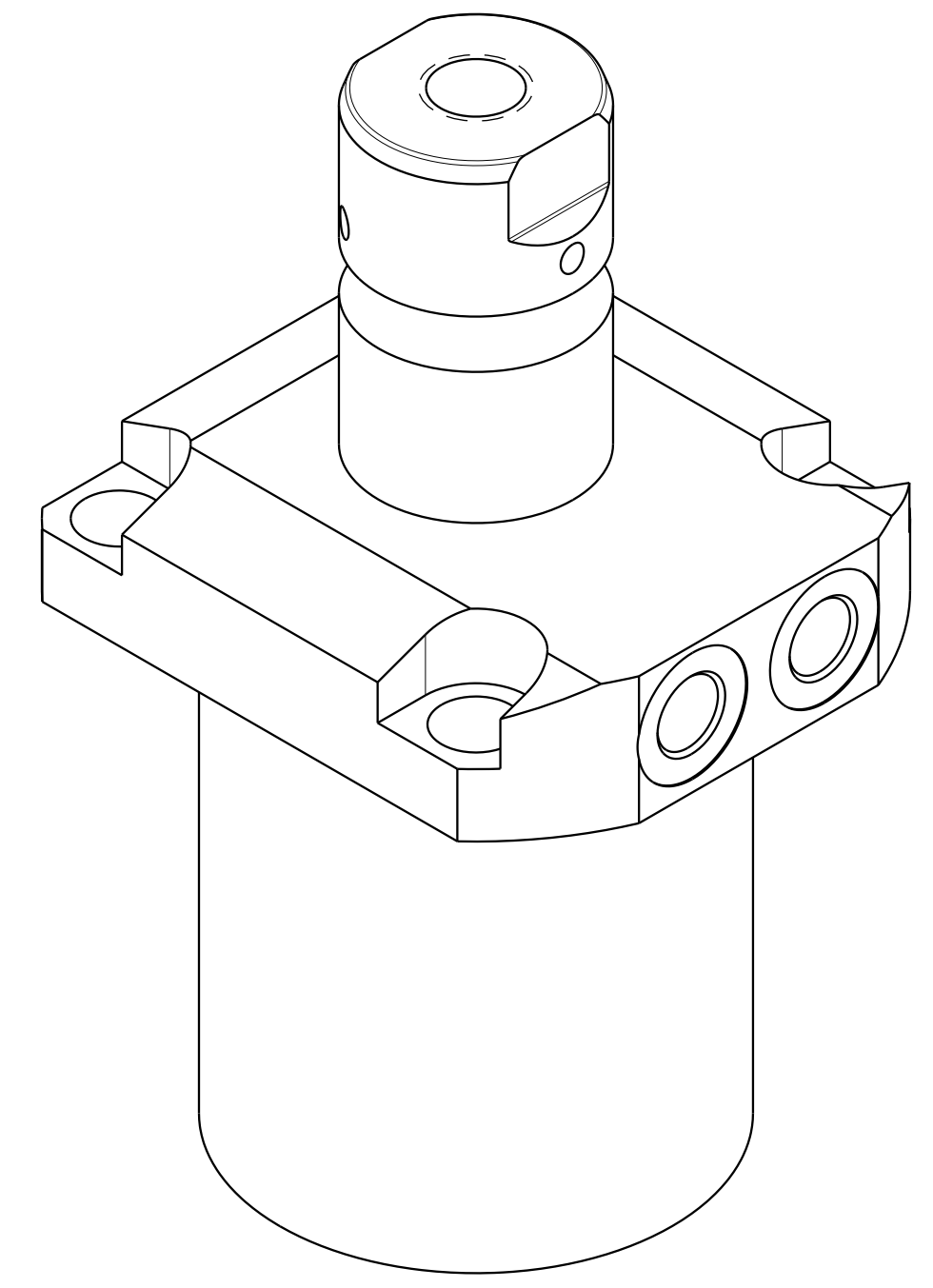
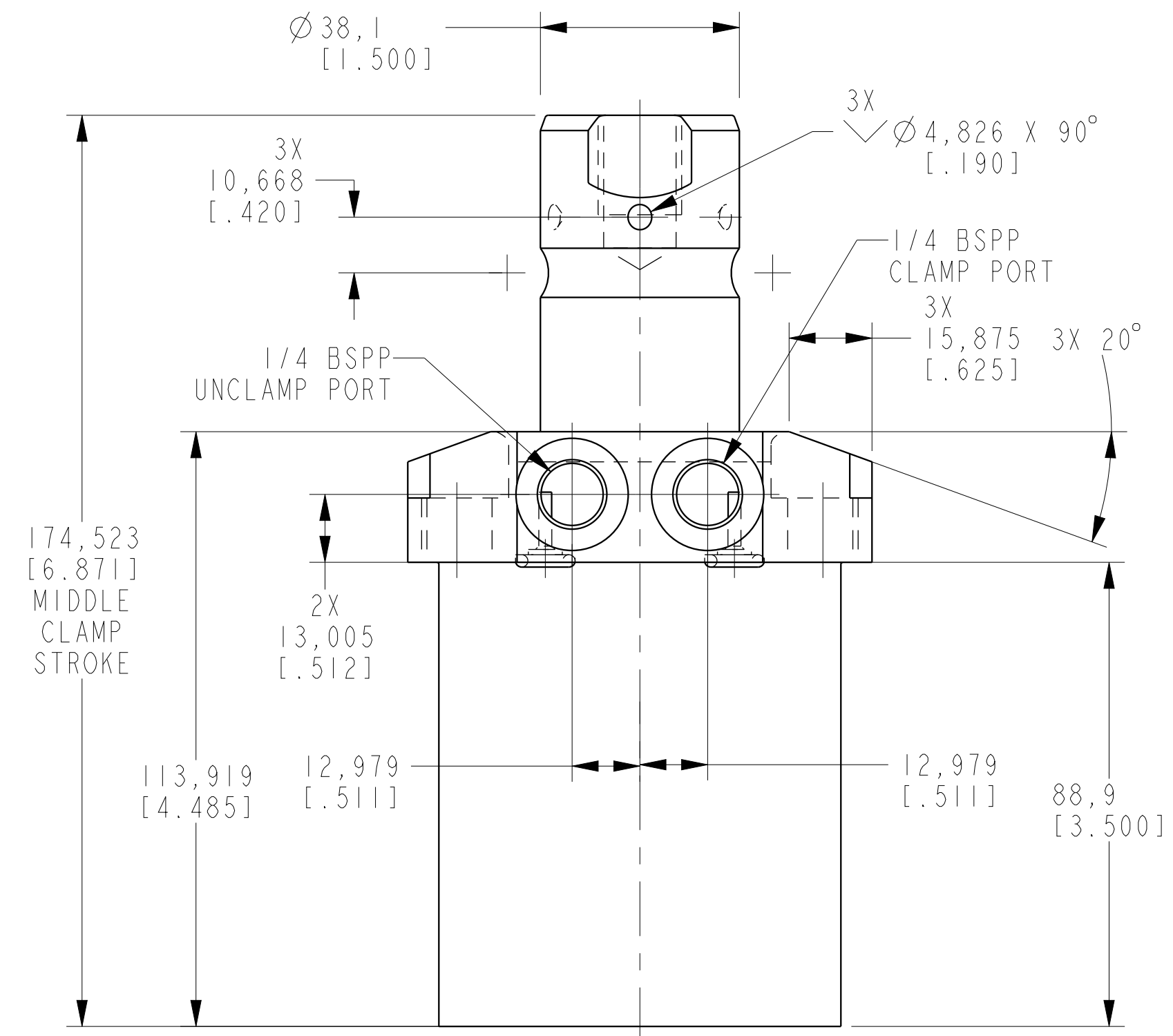
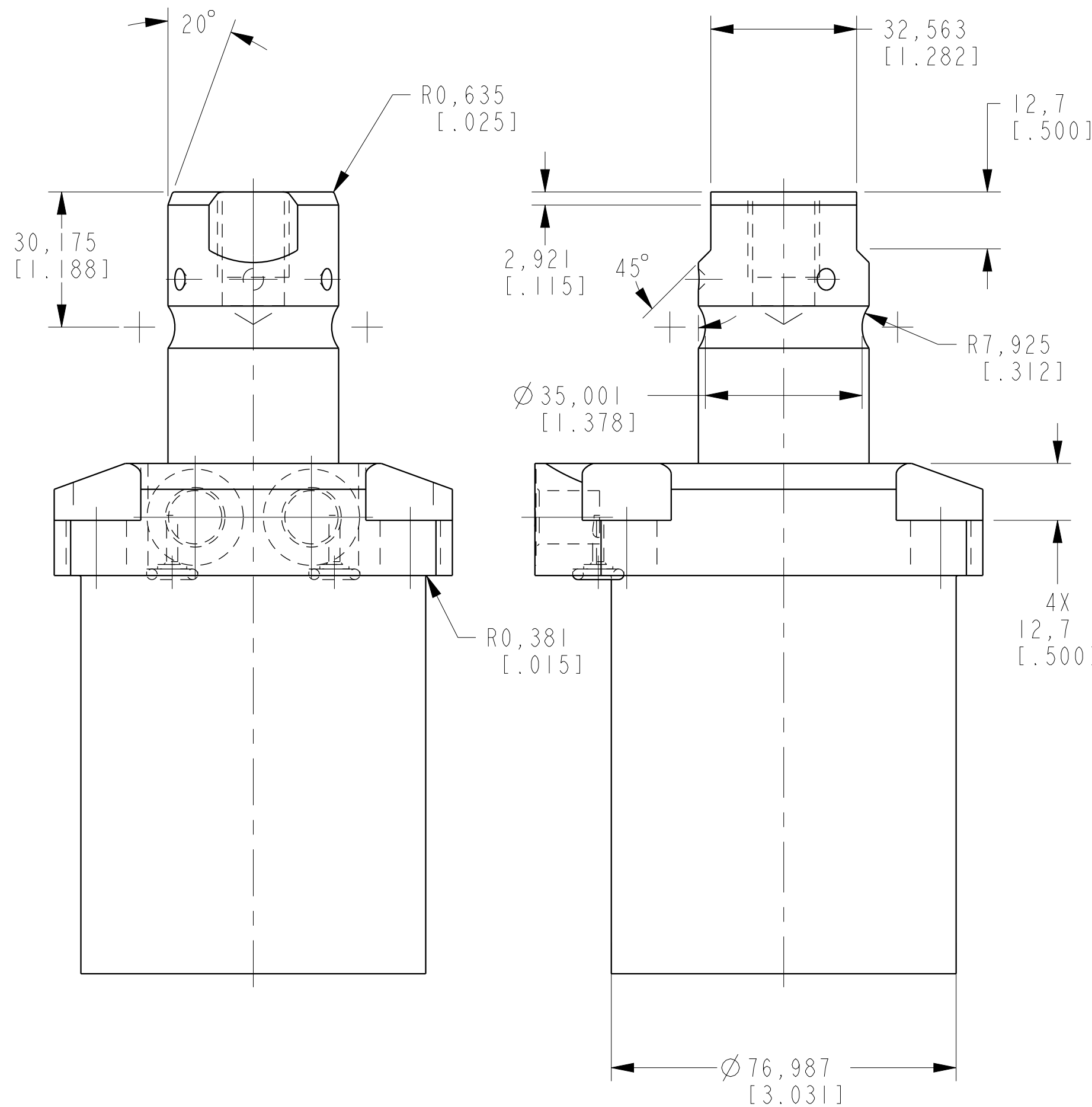
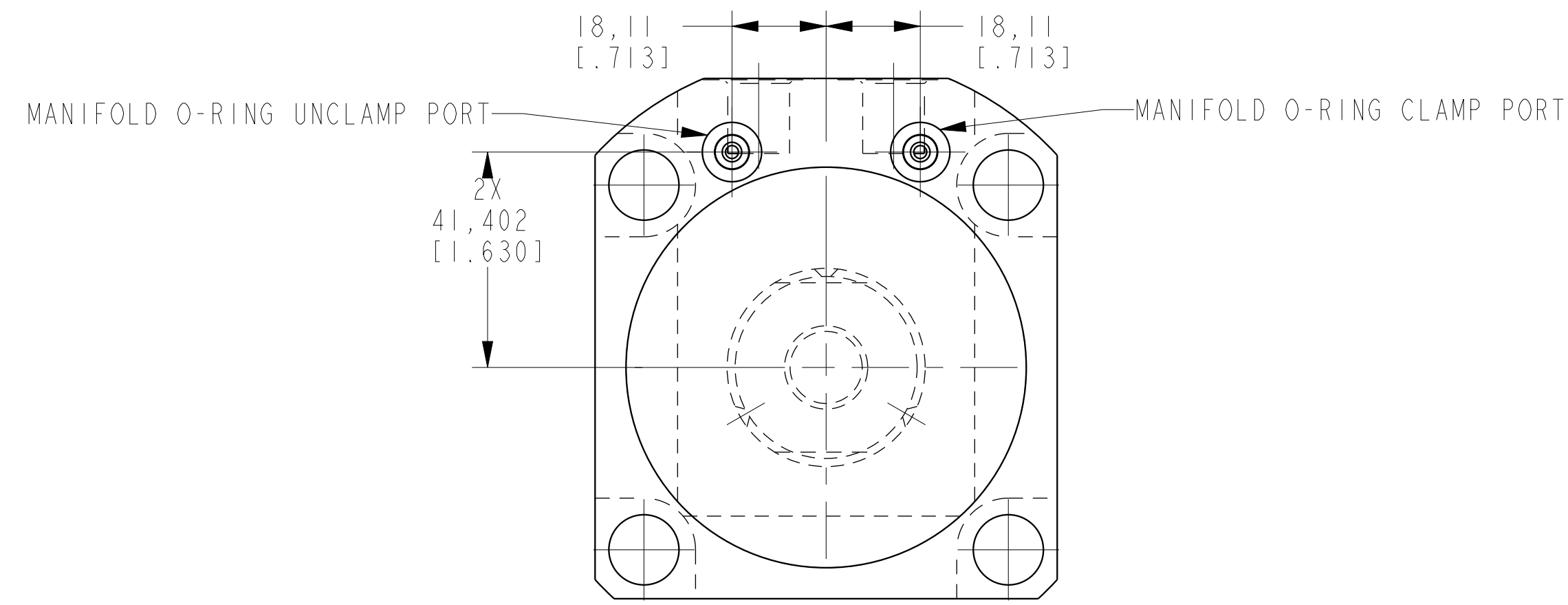


1

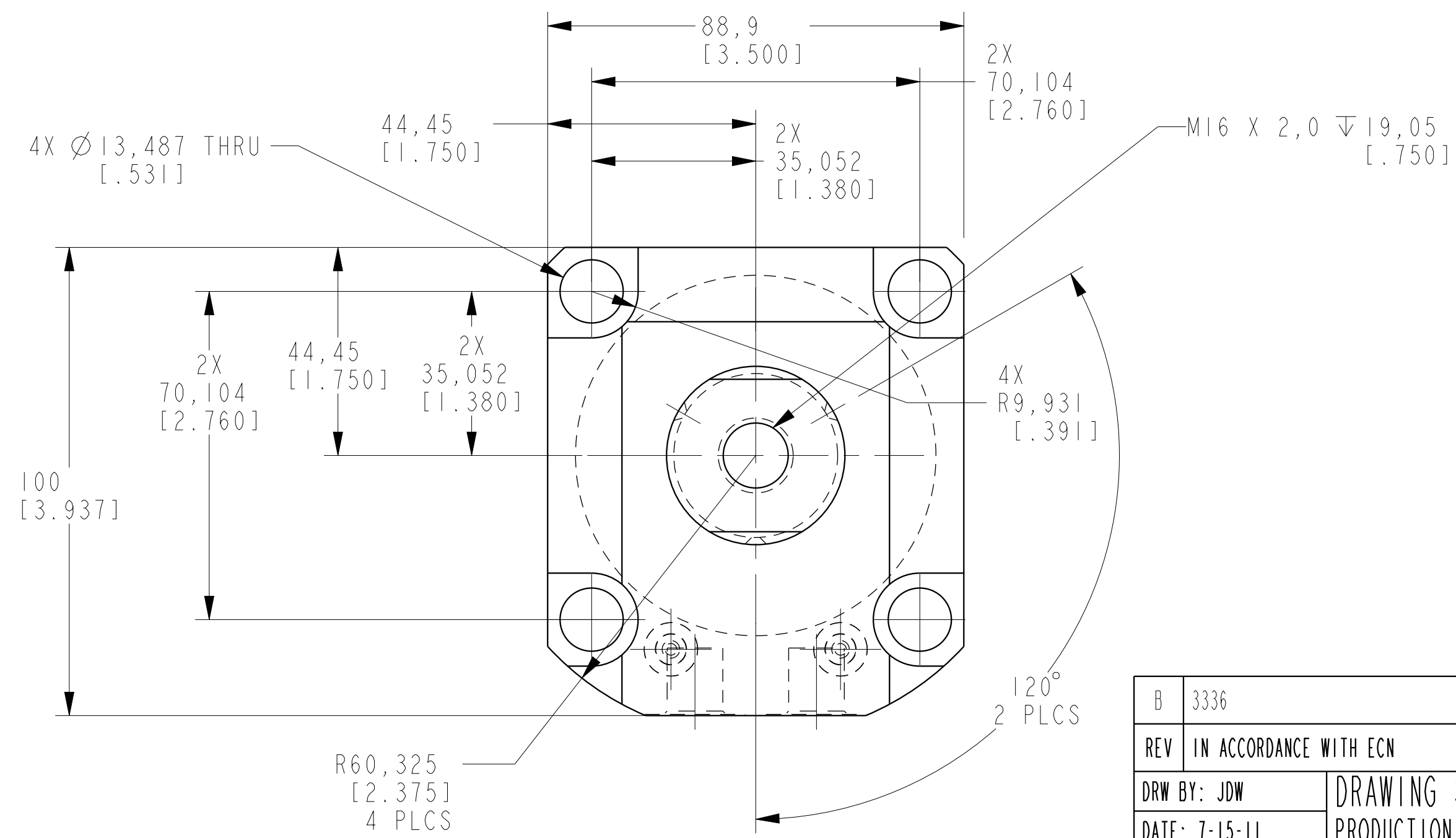
2

3

4



ILCM41463322 REV B ECN 3336



<b>CAD CONTROL DRAWING</b>			
		VEKTEK, INC. 1334 E. SIXTH AVE. P.O. BOX 625 EMPORIA, KS. 66801 U.S.A.	

B	3336	RELEASE	GAR	11/17/17	41463322	B	SC, LP, TF, TC, 33 KN, DA, LH
REV	IN ACCORDANCE WITH ECN	EFFECTIVE DATE	REVISED BY	DATE	REFERENCE MODEL	REF REV	
DRW BY:	JDW	DRAWING STATUS: <b>Released</b>			TOLERANCES DO NOT APPLY	UNITS	SIZE
DATE:	7-15-11	PRODUCTION APPROVED FOR RELEASED STATUS ONLY			DIMENSIONS ARE NOMINAL	mm (inch)	D
							ILCM41463322
							REV B