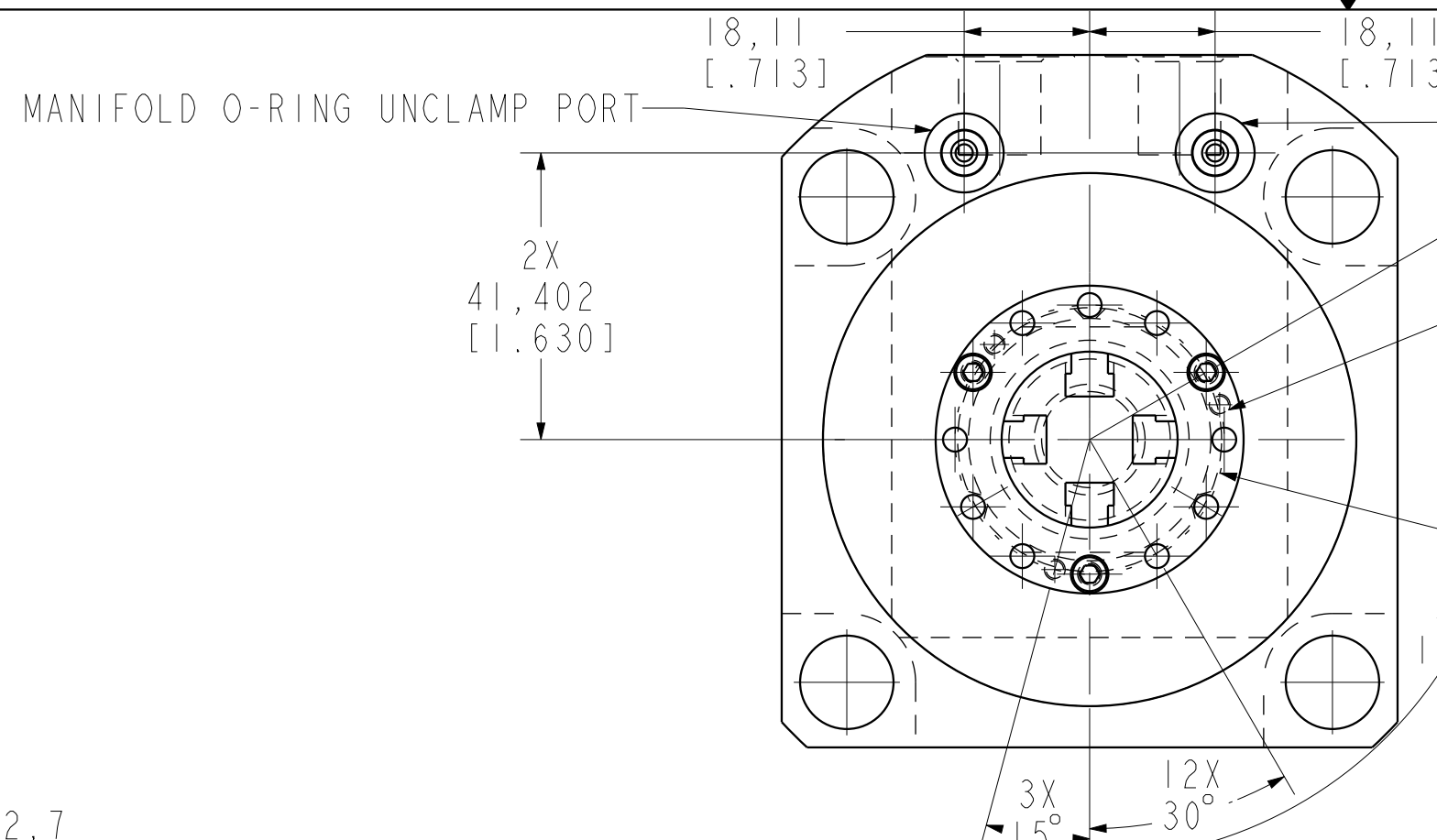


4X 5,283
[.208]

4X 6,985
[.275]

32,563
[1.282]



MANIFOLD O-RING UNCLAMP PORT

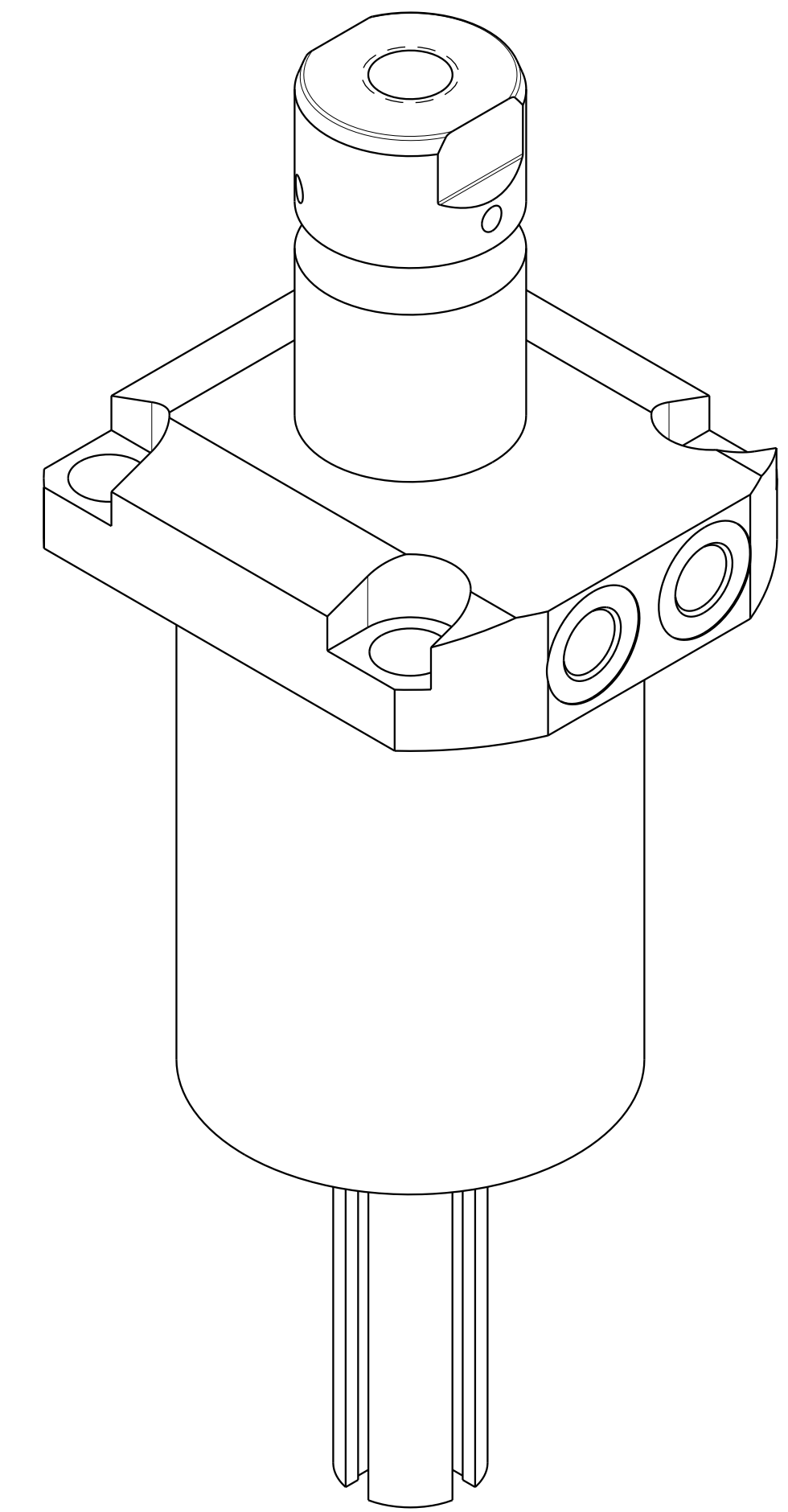
MANIFOLD O-RING CLAMP PORT

2X 41,402
[1.630]

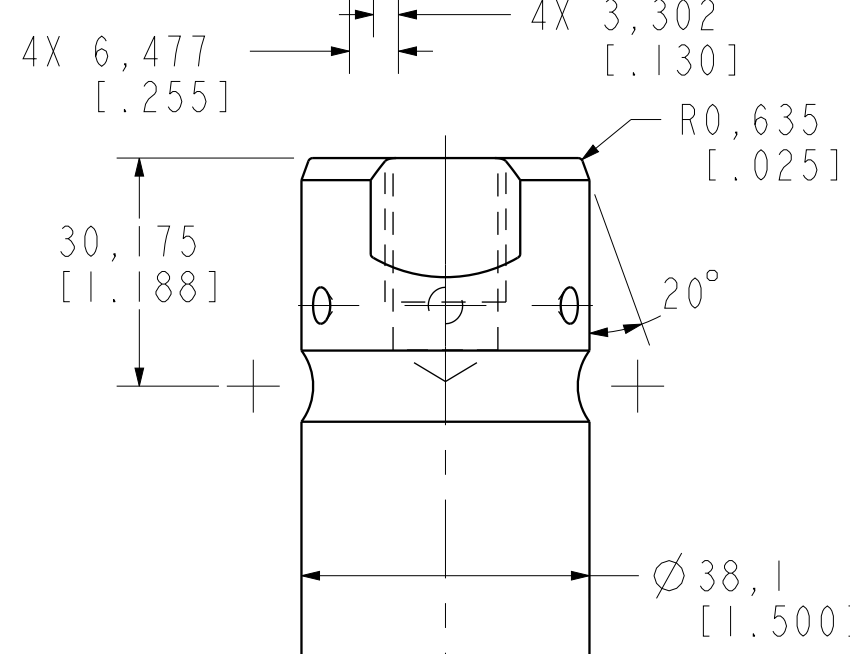
6X M3 X 0.5 ∇ 3,81
[.150]

Ø38,862 BOLT CIRCLE
[1.530]

3X 120°



I LCM41463324PS REV D ECN 4191



4X 6,477
[.255]

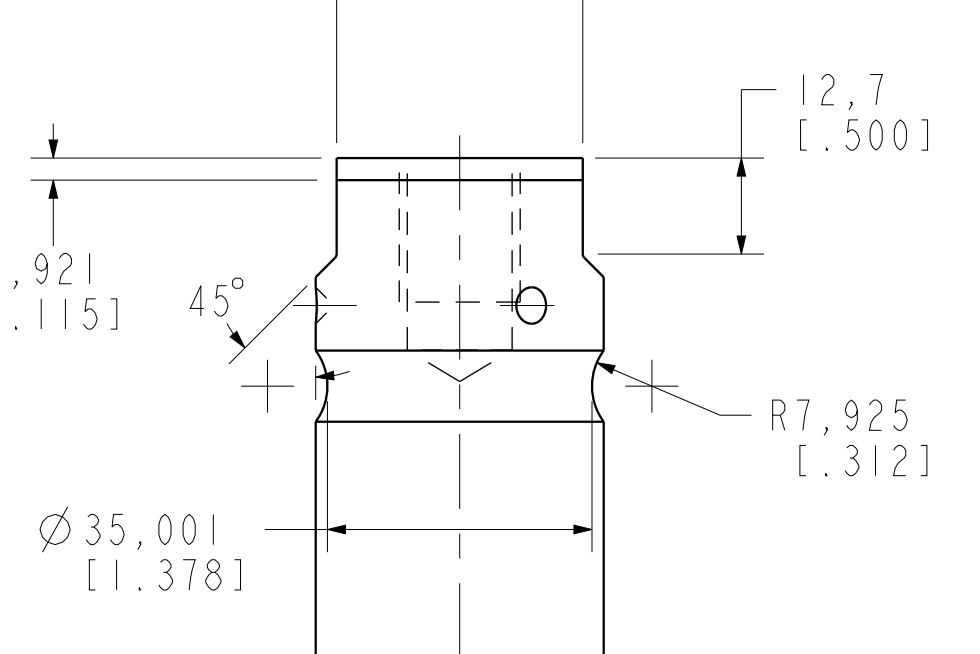
4X 3,302
[.130]

R0,635
[.025]

30,175
[1.188]

20°

Ø38,1
[1.500]



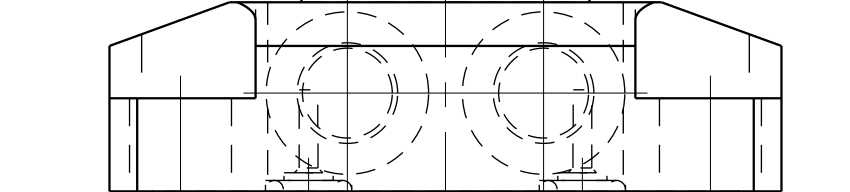
12,7
[.500]

2,921
[.115]

45°

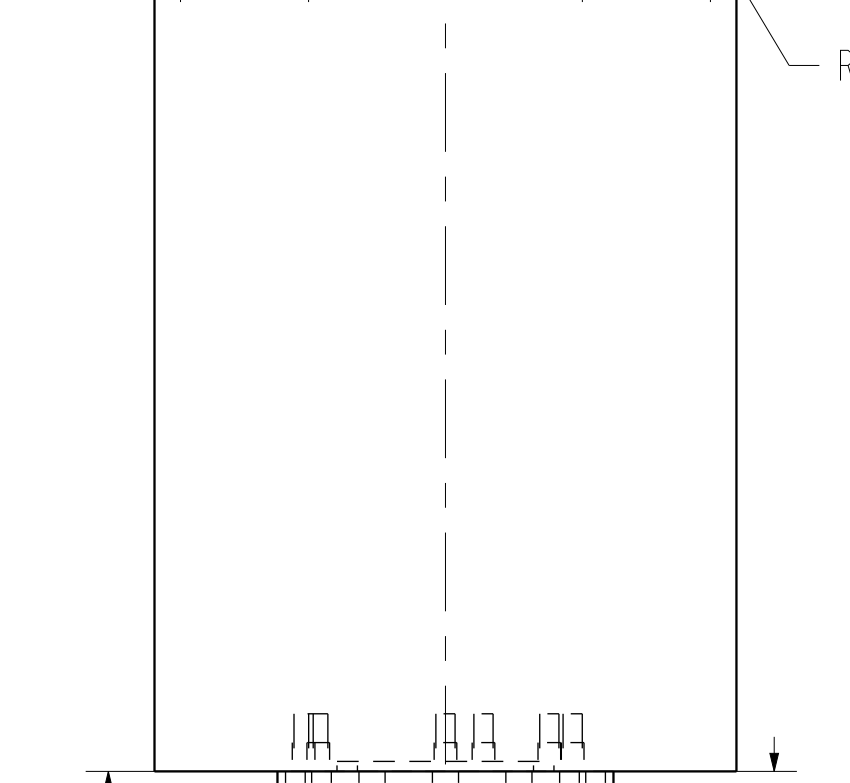
R7,925
[.312]

Ø35,001
[1.378]



R0,381
[.015]

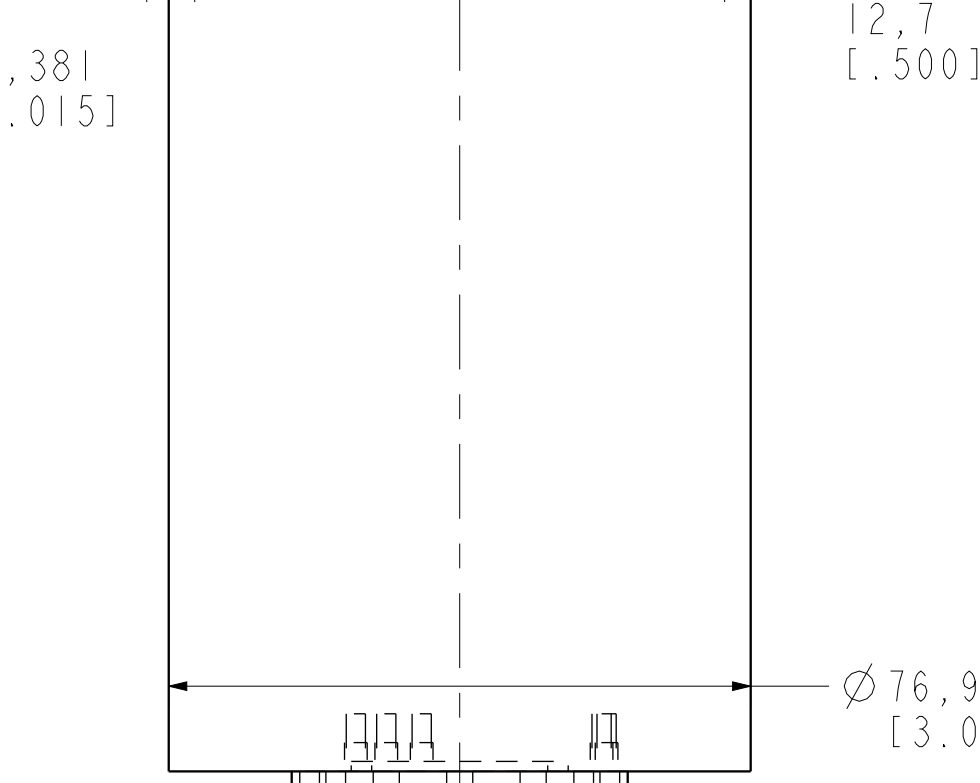
4X 12,7
[.500]



81,28
[3.200]

2,54
[.100]

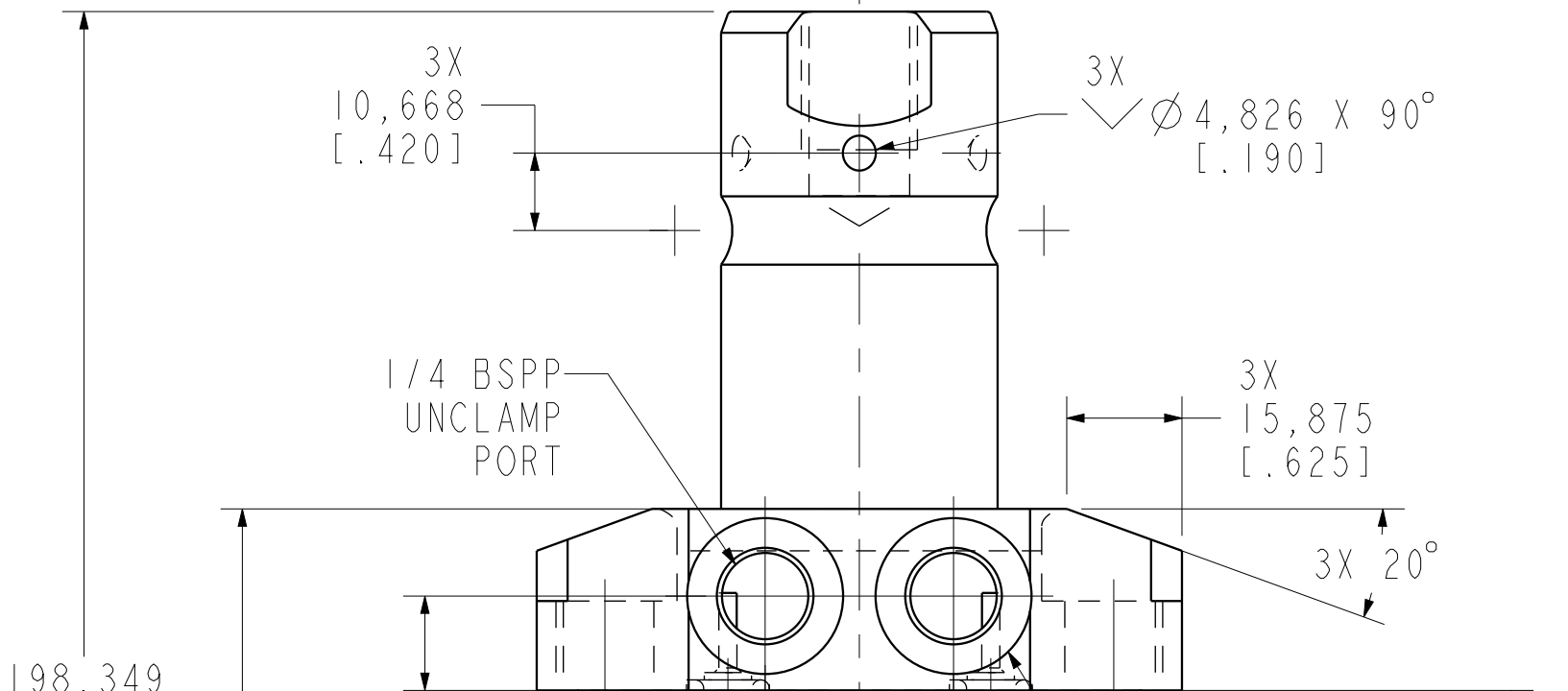
Ø44,45
[1.750]



Ø76,987
[3.031]

4X 6,985
[.275]

4X 70,612
[2.780]



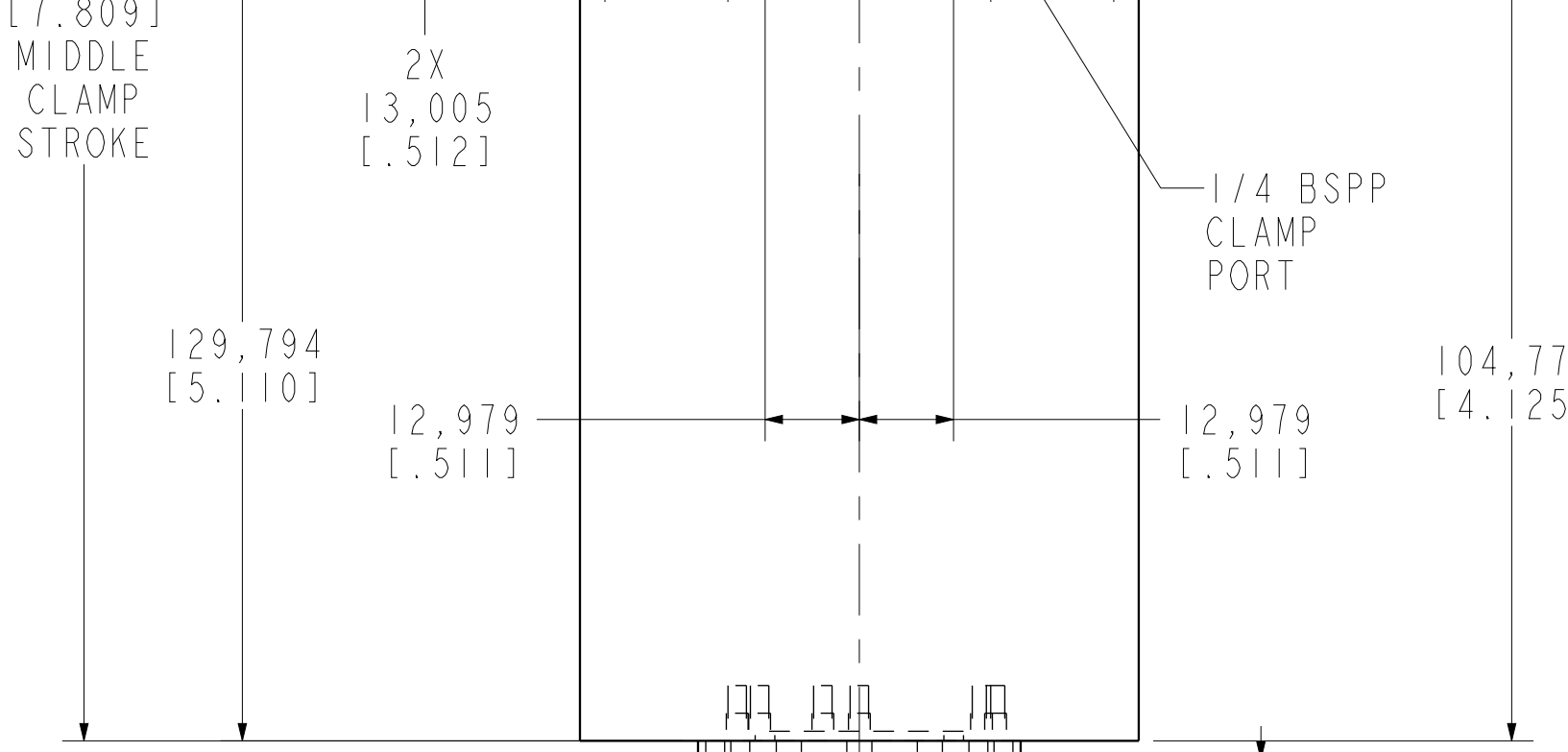
3X 10,668
[.420]

3X ∇ 4,826 X 90°
[.190]

1/4 BSPP UNCLAMP PORT

3X 15,875
[.625]

3X 20°



198,349
[7.809]

2X 13,005
[.512]

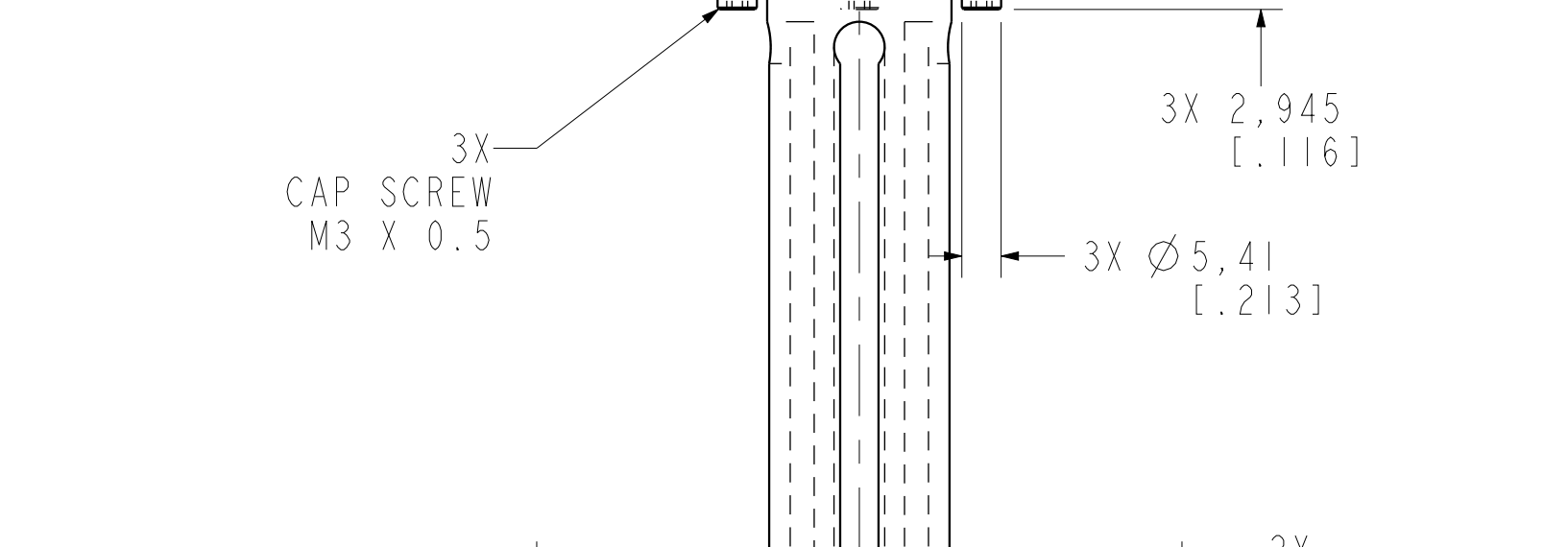
129,794
[5.110]

12,979
[.511]

12,979
[.511]

104,775
[4.125]

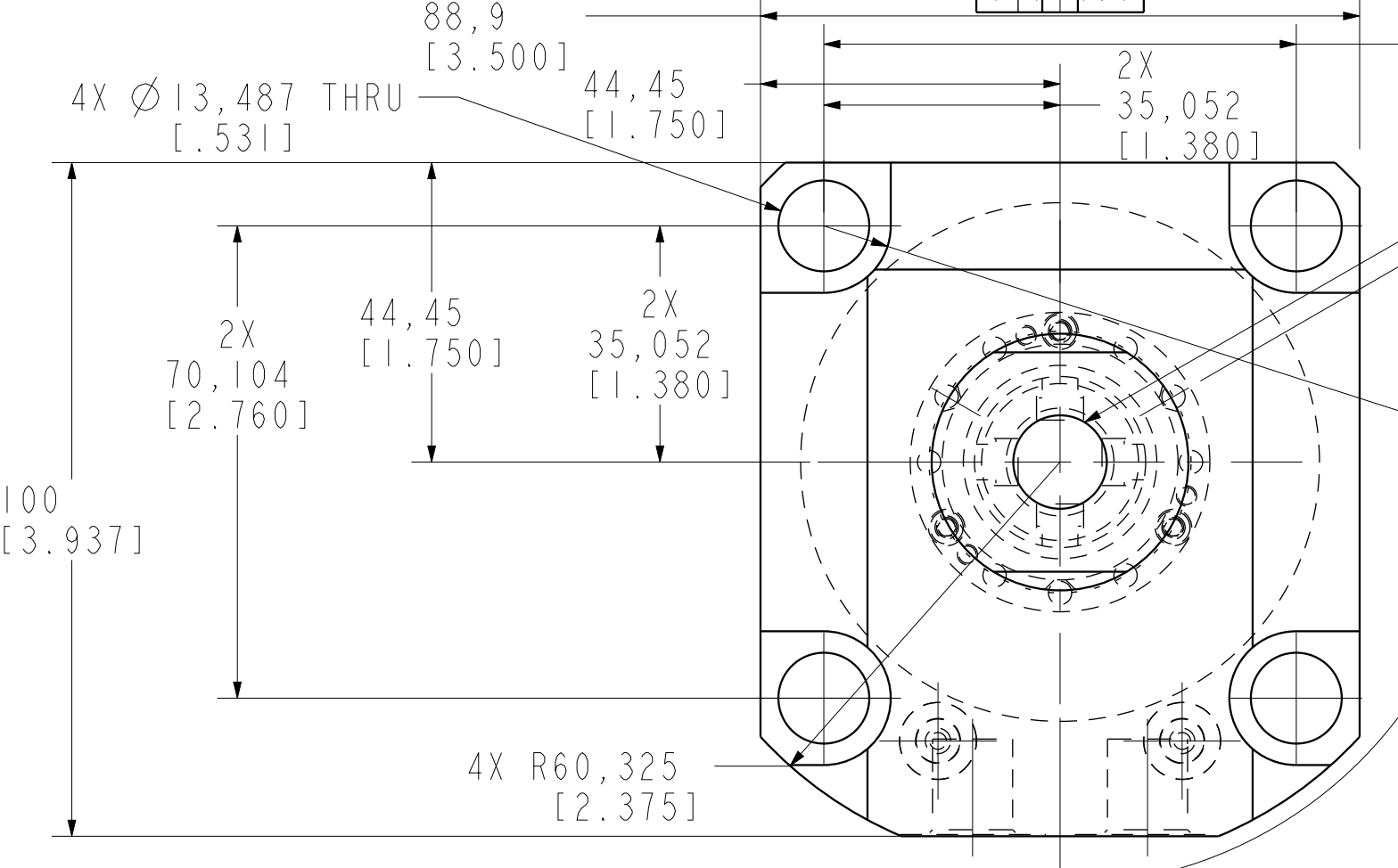
1/4 BSPP CLAMP PORT



3X CAP SCREW
M3 X 0.5

3X 2,945
[.116]

3X Ø5,41
[.213]



88,9
[3.500]

4X Ø13,487 THRU
[.531]

44,45
[1.750]

2X 70,104
[2.760]

35,052
[1.380]

2X 70,104
[2.760]

M16 X 2,0 ∇ 19,05
[.750]

4X R9,931
[.391]

2X 120°

4X R60,325
[2.375]

CAD CONTROL DRAWING			
		VEKTEK, INC. 1334 E. SIXTH AVE. P.O. BOX 625 EMPORIA, KS. 66801 U.S.A.	
D 4191	RELEASE	JDW	05/22/20
REV IN ACCORDANCE WITH ECN	EFFECTIVE DATE	REVISED BY	DATE
DRW BY: JDW	DRAWING STATUS: Released		TOLERANCES DO NOT APPLY UNITS
DATE: 07/02/14	PRODUCTION APPROVED FOR RELEASED STATUS ONLY		mm (inch)
41463324PS	A	SC,LP,TF,TC,33 KN,DA,LH,LS,PS	SIZE D
I LCM41463324PS	REV D		FORM FEG036, Rev. C