

1

2

3

4

D

D

C

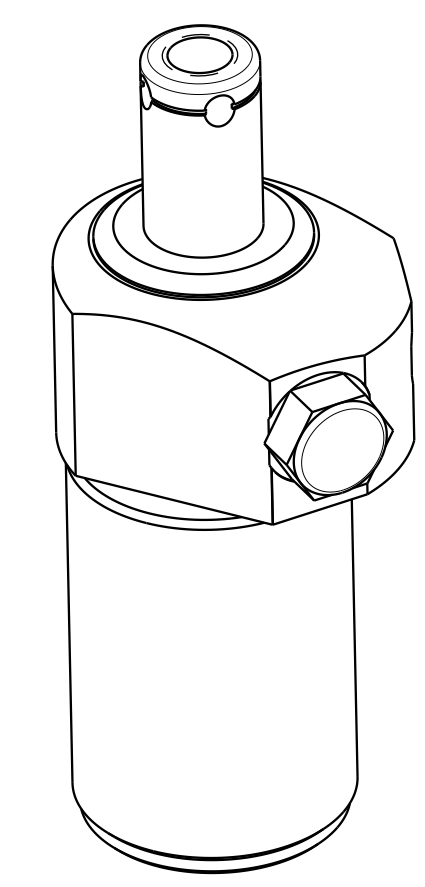
C

B

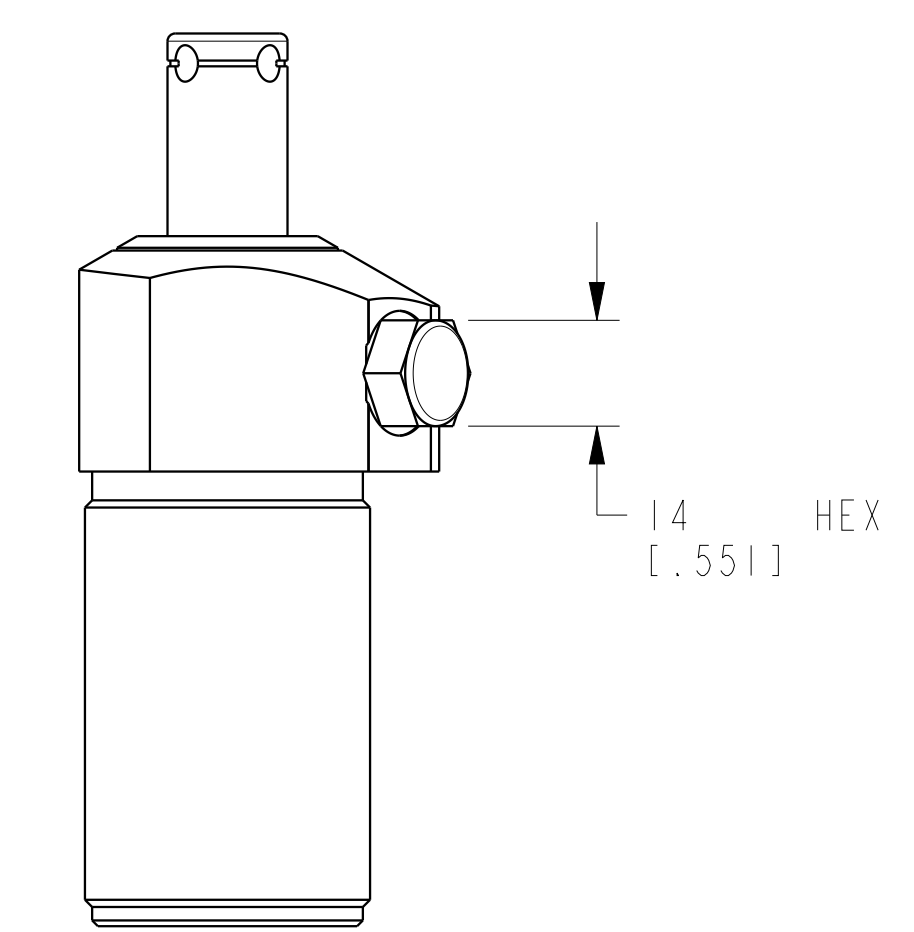
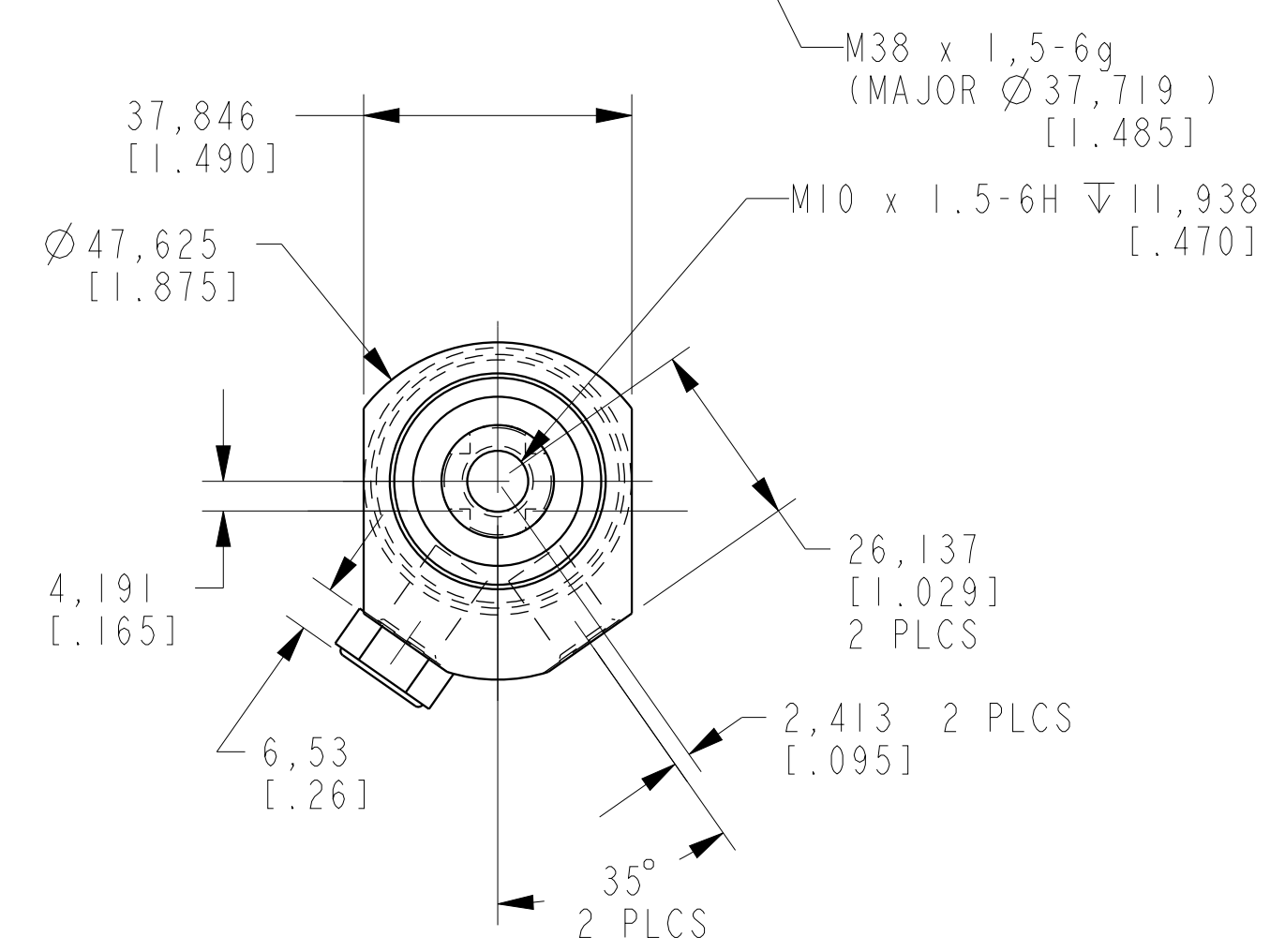
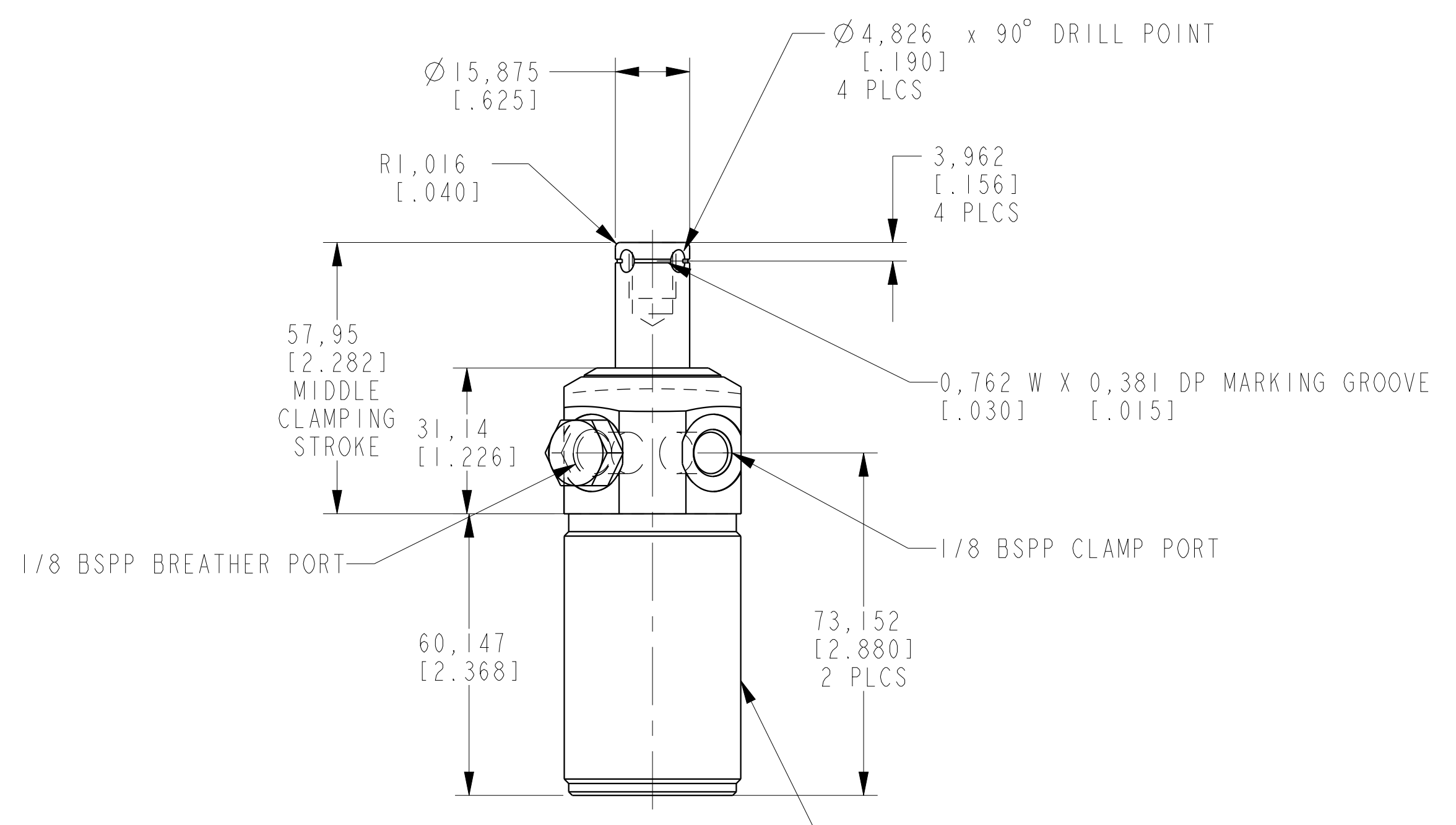
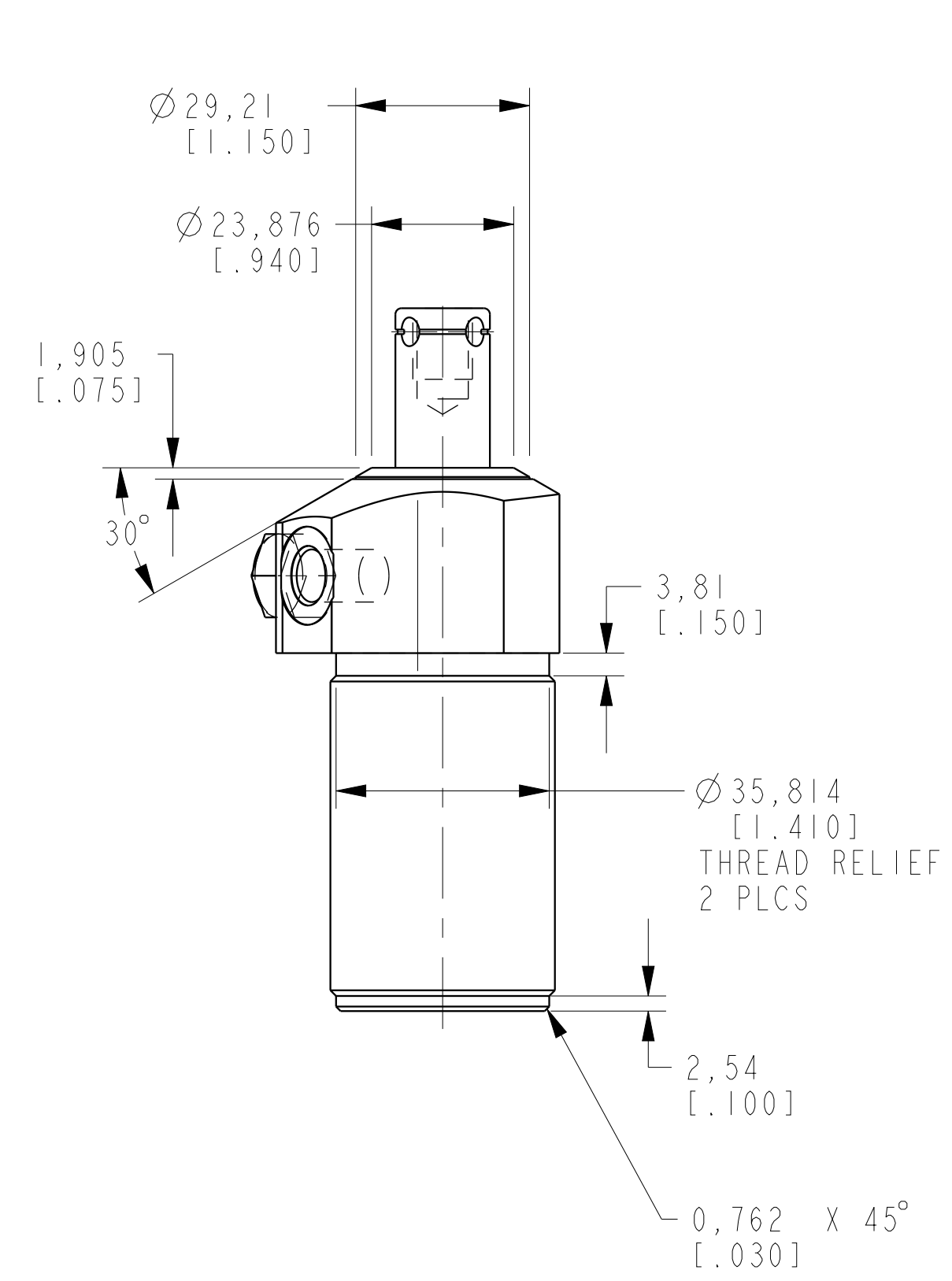
B

A

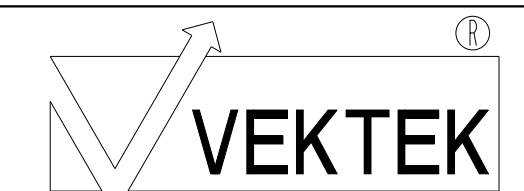
A



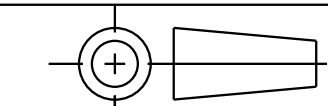
ILCM41500512 REV C ECN 3531



CAD CONTROL DRAWING



VEKTEK, INC.
1334 E. SIXTH AVE. P.O. BOX 625
EMPORIA, KS. 66801 U.S.A.



| | | | | | | | |
|---------|------------------------|--|------------|----------|-------------------------|-----------|------------------------|
| C | 3531 | RELEASE | NPETERS | 07/23/18 | 41500512 | B | SC, TB, 4.9 KN, SA, LH |
| REV | IN ACCORDANCE WITH ECN | EFFECTIVE DATE | REVISED BY | DATE | REFERENCE MODEL | REF REV | **** |
| DRW BY: | K. ROEMER | DRAWING STATUS: Released | | | TOLERANCES DO NOT APPLY | UNITS | SIZE |
| DATE: | 03-27-06 | PRODUCTION APPROVED FOR RELEASED STATUS ONLY | | | DIMENSIONS ARE NOMINAL | mm (inch) | D |
| | | | | | ILCM41500512 | REV | C |