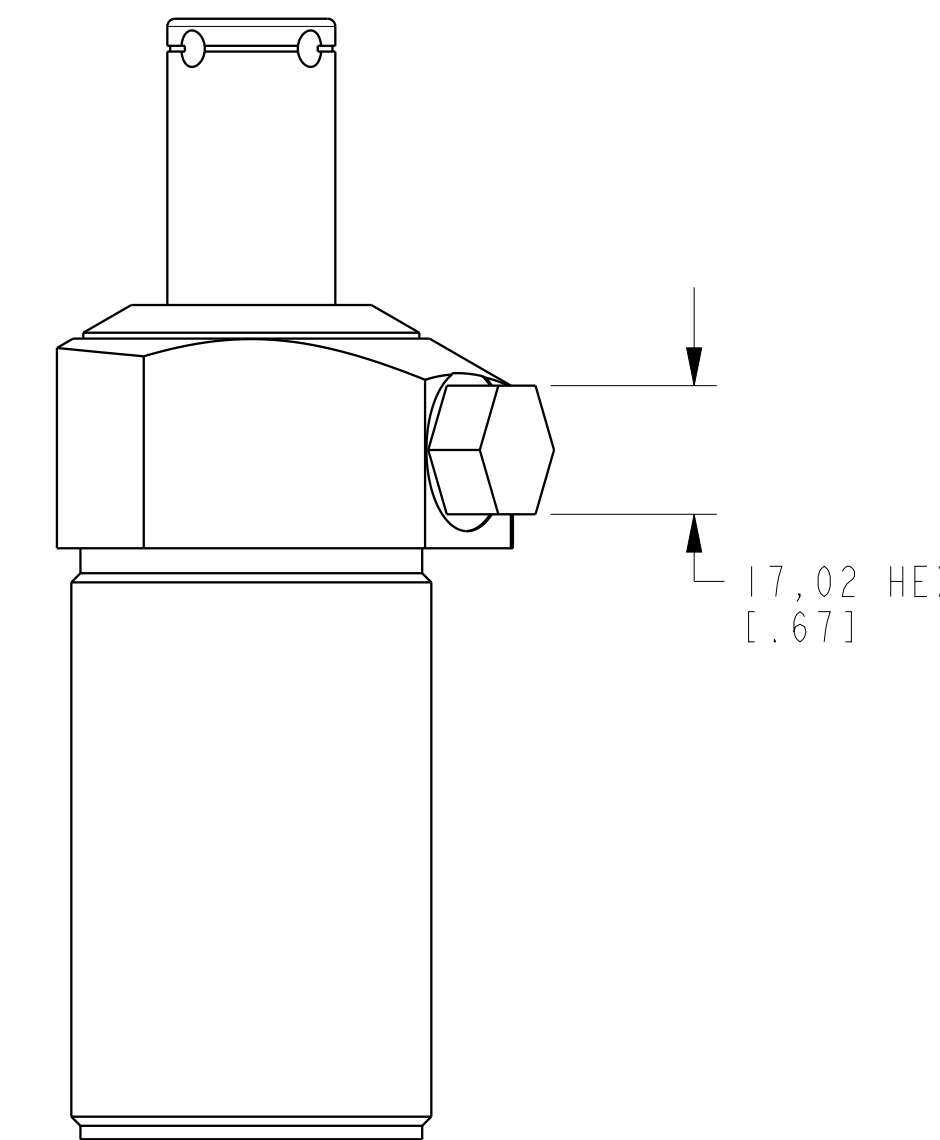
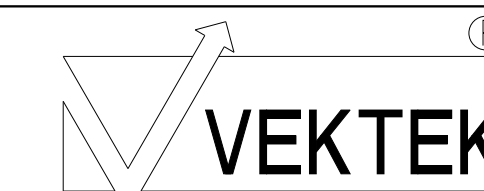


I LCM41501111 REV C ECN 3600



CAD CONTROL DRAWING



VEKTEK, INC.
1334 E. SIXTH AVE. P.O. BOX 625
EMPORIA, KS. 66801 U.S.A.

| | | | | |
|---------|--|----------------|------------|-------------------------|
| C | 3600 | RELEASE | NPETERS | 10/4/18 |
| REV | IN ACCORDANCE WITH ECN | EFFECTIVE DATE | REVISED BY | DATE |
| DRW BY: | DRAWING STATUS: Released | | | TOLERANCES DO NOT APPLY |
| DATE: | PRODUCTION APPROVED FOR RELEASED STATUS ONLY | | | DIMENSIONS ARE NOMINAL |

| | | |
|-----------------|---------|-------------------------|
| 41501111 | B | SC, TB, 11.6 KN, SA, RH |
| REFERENCE MODEL | REF REV | SIZE |
| | | D |
| I LCM41501111 | REV C | |