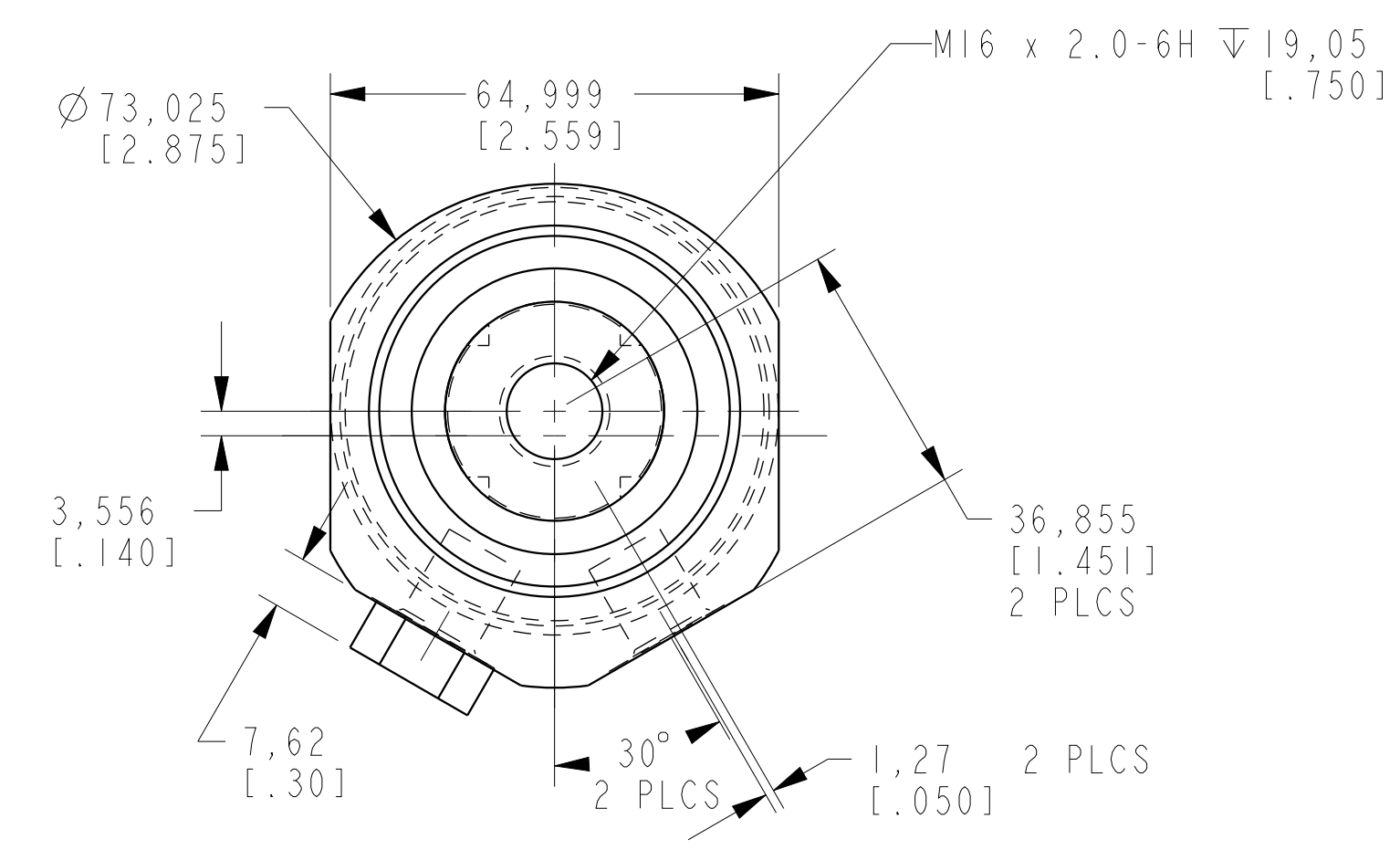
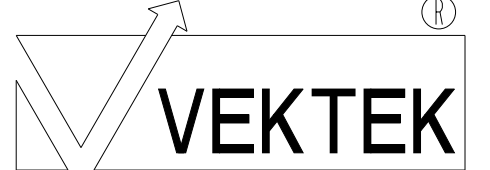


I L C M 4 1 5 0 2 2 1 2 REV C ECN 3600



CAD CONTROL DRAWING		
	VEKTEK, INC. 1334 E. SIXTH AVE. P.O. BOX 625 EMPORIA, KS. 66801 U.S.A.	

C	3600	RELEASE	NPETERS	10/8/18	41502212	F	SC, TB, 22 KN, SA, LH
REV	IN ACCORDANCE WITH ECN	EFFECTIVE DATE	REVISED BY	DATE	REFERENCE MODEL	REF REV	****
DRW BY:	DRAWING STATUS: <b>Released</b>				TOLERANCES DO NOT APPLY	UNITS	SIZE
DATE:	PRODUCTION APPROVED FOR RELEASED STATUS ONLY				DIMENSIONS ARE NOMINAL	mm (inch)	D
							I L C M 4 1 5 0 2 2 1 2
							REV C