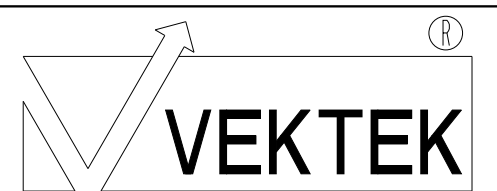
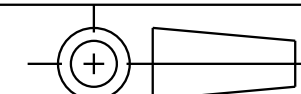


I LCM41520523US REV A ECN 5678

CAD CONTROL DRAWING



VEKTEK, INC.  
 1334 E. SIXTH AVE. P.O. BOX 625  
 EMPORIA, KS. 66801 U.S.A.



|         |                        |  |            |        |                         |           |                            |
|---------|------------------------|--|------------|--------|-------------------------|-----------|----------------------------|
| A       | 5678                   | RELEASE                                      | ALS        | 4/7/25 | 41520523US              | A         | SC, BF, 4.9 KN, DA, RH, US |
| REV     | IN ACCORDANCE WITH ECN | EFFECTIVE DATE                               | REVISED BY | DATE   | REFERENCE MODEL         | REF REV   |                            |
| DRW BY: | ALS                    | DRAWING STATUS: Released                     |            |        | TOLERANCES DO NOT APPLY | UNITS     | SIZE                       |
| DATE:   | 4/10/25                | PRODUCTION APPROVED FOR RELEASED STATUS ONLY |            |        | DIMENSIONS ARE NOMINAL  | mm (inch) | D I LCM41520523US REV A    |