

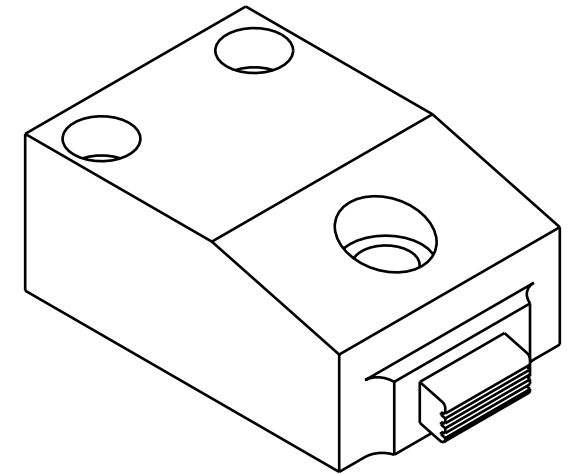
CBORE $\varnothing 15,951 \nabla 3,175$
 [.628] [.125]

O-RING EXTEND PORT

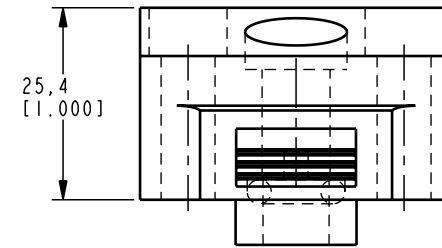
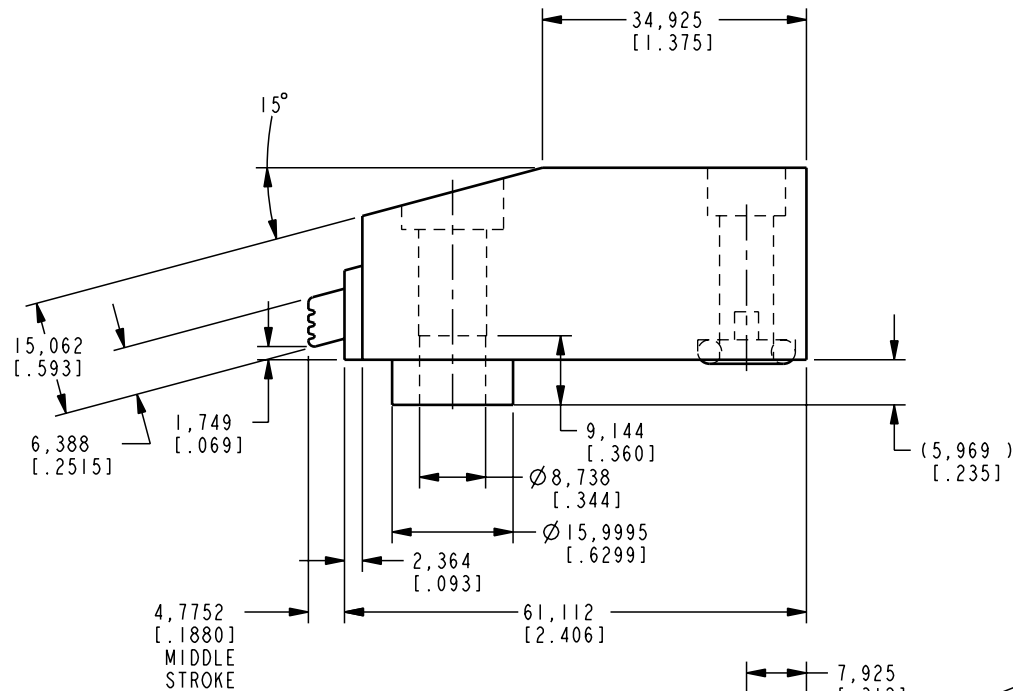
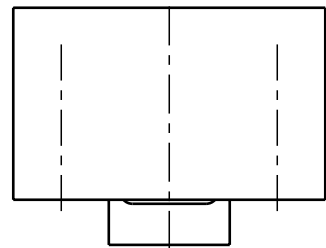
$\varnothing 3,175$
 [.125]

$\varnothing 12,927 \nabla 2,642$
 [.509] [.104]

7,925
 [.312]

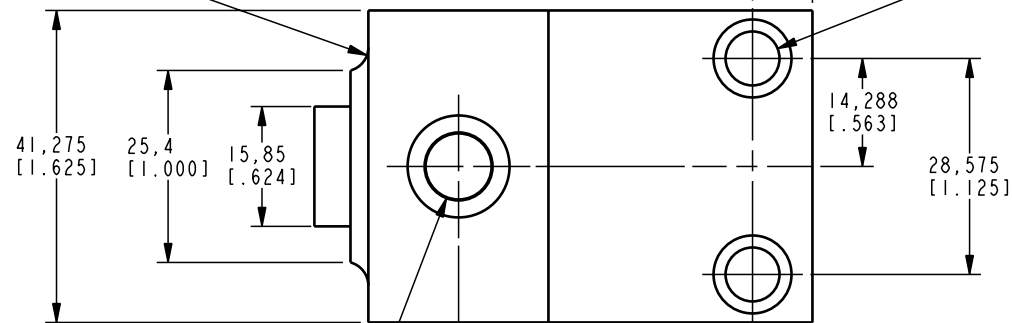


ILCM41531000 REV A ECN 1498



R3,175 TYP
 [.125]

$\varnothing 7,137$ THRU [.281]
 CBORE $\varnothing 10,312 \nabla 6,35$
 [.406] [.250]
 2 PLCS



$\varnothing 8,992$ THRU [.354]
 CBORE $\varnothing 13,487 \nabla 3,175$
 [.531] [.125]

CAD CONTROL
 DRAWING



VEKTEK, INC.
 1334 E. SIXTH AVE. P.O. BOX 625
 EMPORIA, KS. 66801 U.S.A.

A	1498	RELEASE	K. ROEMER	05-10-06	41531000	F	EDGE CLAMP, MM, 9 KN
REV	IN ACCORDANCE WITH ECN	EFFECTIVE DATE	REVISED BY	DATE	REFERENCE MODEL	REF REV	''''
DRW BY:	KR	DRAWING STATUS: Released			TOLERANCES DO NOT APPLY	UNITS	SIZE
DATE:	05-10-06	PRODUCTION APPROVED FOR RELEASED STATUS ONLY			DIMENSIONS ARE NOMINAL	mm [inch]	B
					ILCM41531000		REV A

FORM FEG036, Rev. A

SHEET 1 OF 1