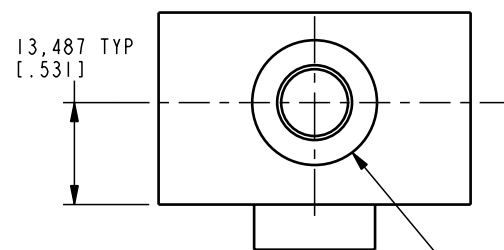
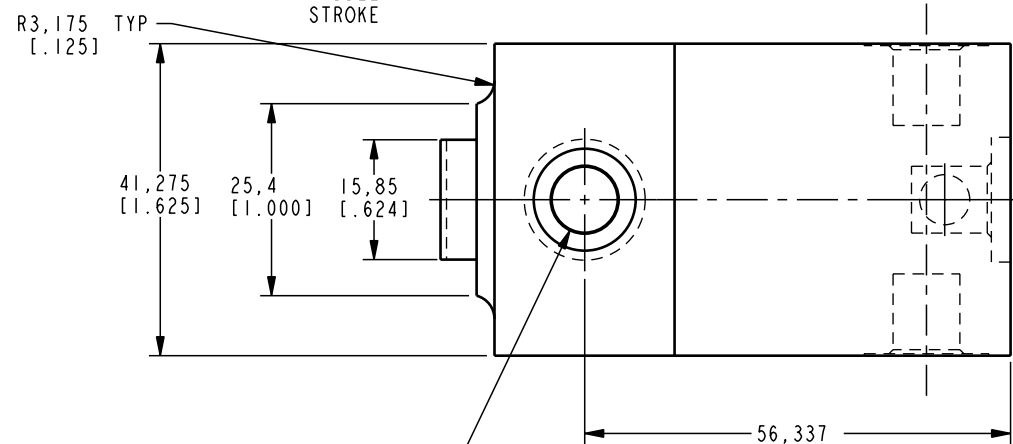
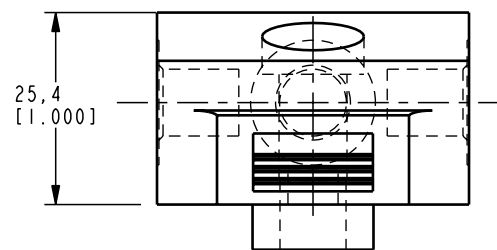
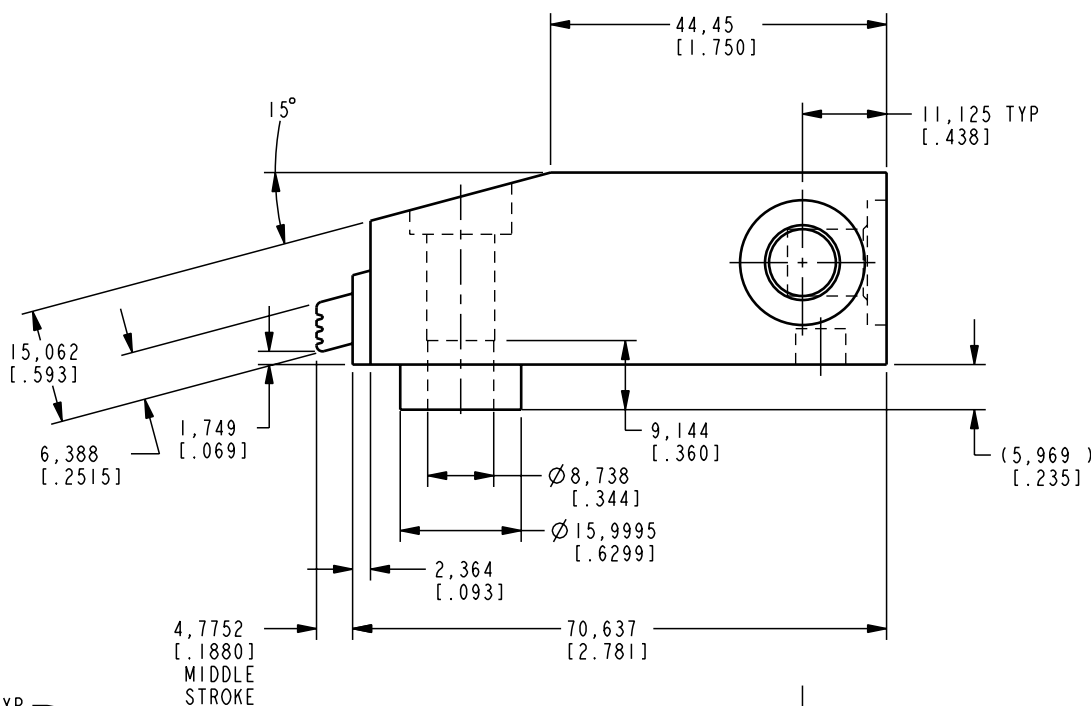


I LCM41531001 REV A ECN 1498



1/8 BSPP O-RING EXTEND PORT - 3 PLCS



Ø 8,992 THRU
[.354]
CBORE Ø 13,487 ± 3,175
[.531] [.125]

CAD CONTROL
DRAWING



VEKTEK, INC.
1334 E. SIXTH AVE. P.O. BOX 625
EMPORIA, KS. 66801 U.S.A.



A	1498	RELEASE	K. ROEMER	05-10-06	41531001	G	EDGE CLAMP, 9 KN
REV	IN ACCORDANCE WITH ECN	EFFECTIVE DATE	REVISED BY	DATE	REFERENCE MODEL	REF REV	''''
DRW BY: KR	DRAWING STATUS: Released				TOLERANCES DO NOT APPLY	UNITS	SIZE
DATE: 05-10-06	PRODUCTION APPROVED FOR RELEASED STATUS ONLY				DIMENSIONS ARE NOMINAL	mm [inch]	B
					I LCM41531001	REV	A

FORM FEG036, Rev. A

SHEET 1 OF 1