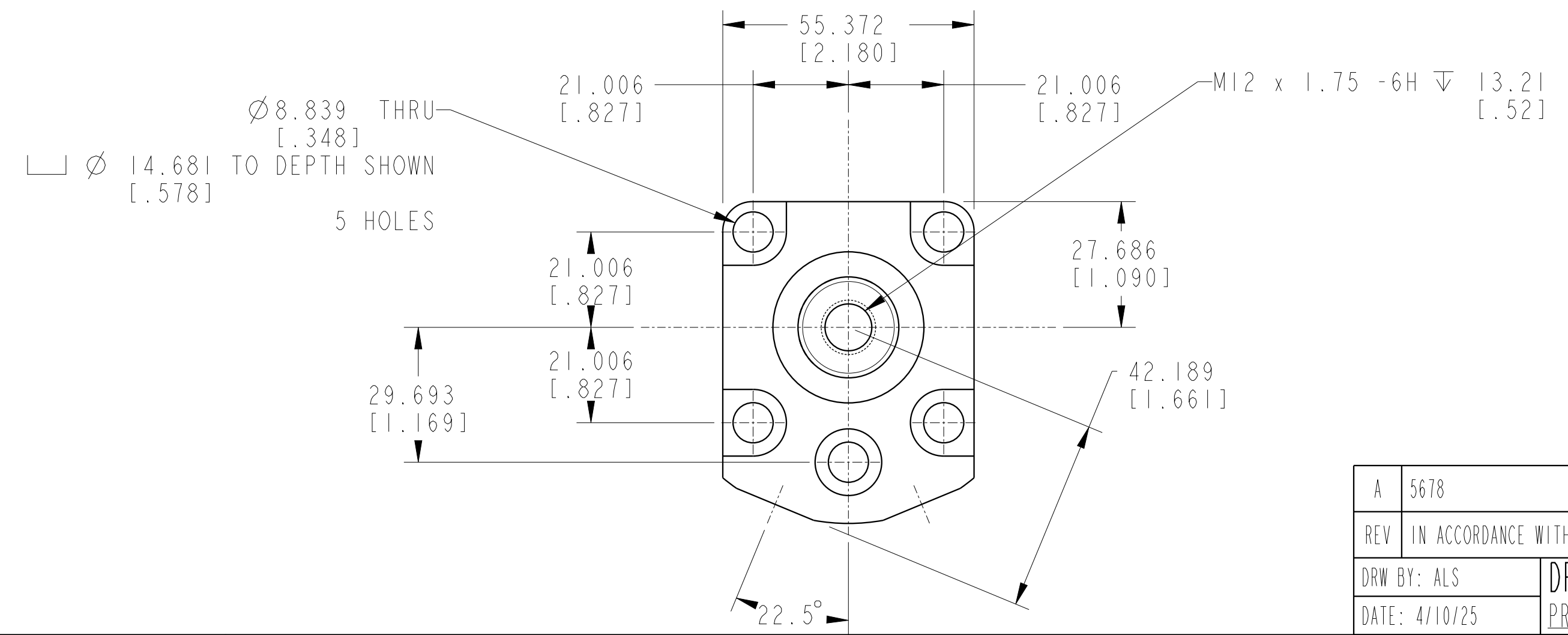
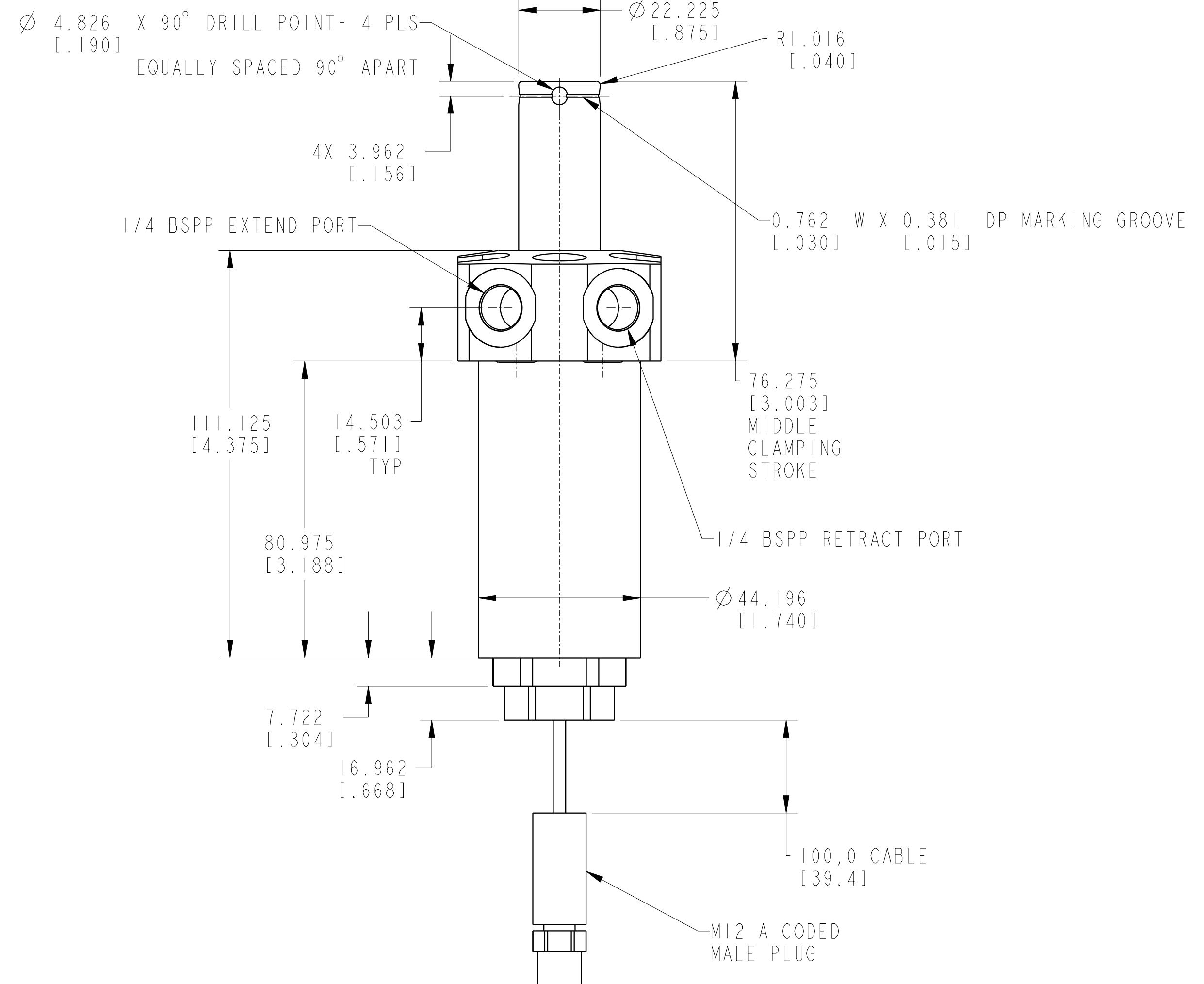
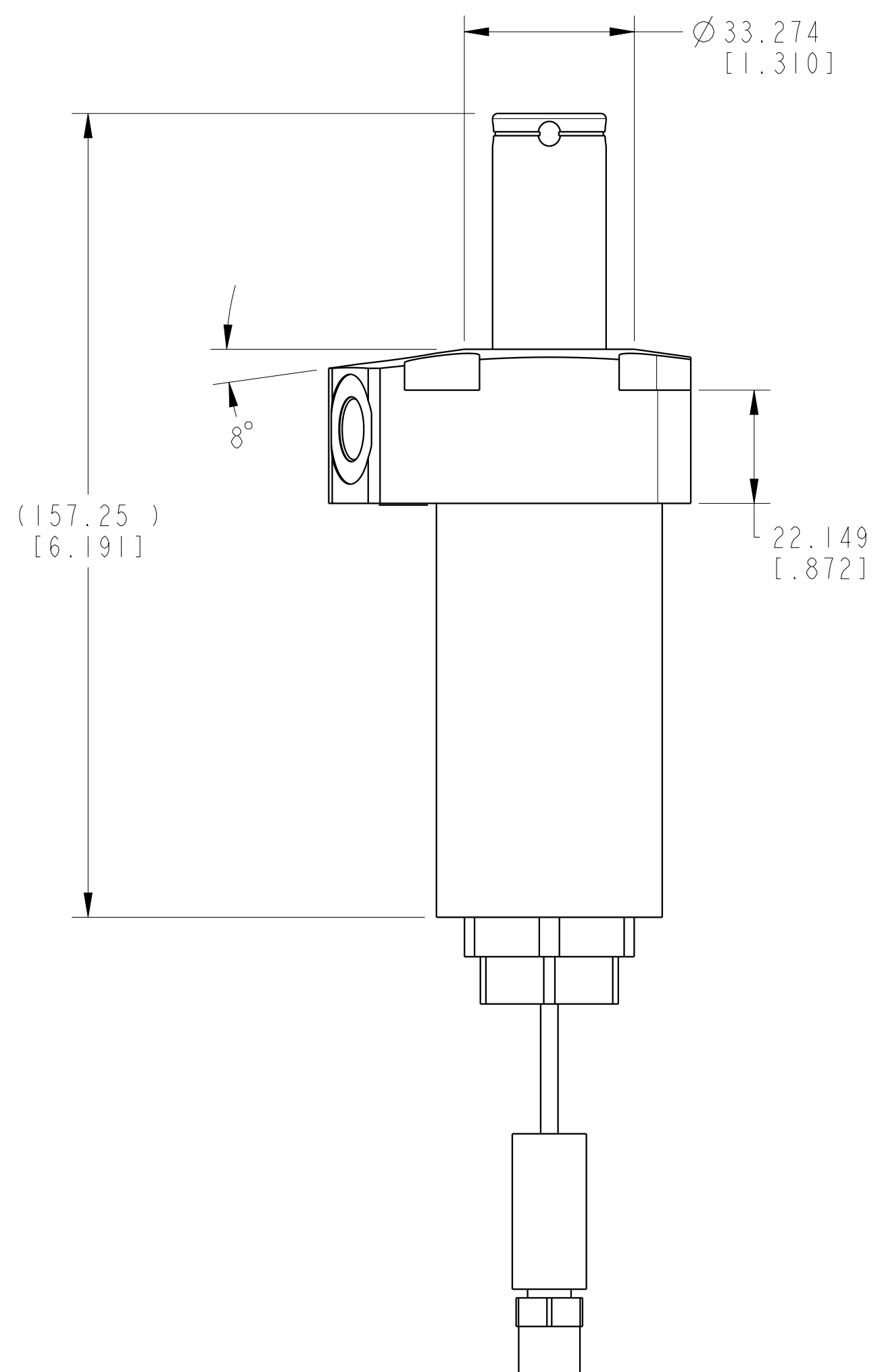


ILCM41561125 REV A ECN 5678



CAD CONTROL DRAWING				 VEKTEK, INC. 1334 E. SIXTH AVE. P.O. BOX 625 EMPORIA, KS. 66801 U.S.A.	
A	5678	RELEASE	ALS	4/7/25	41561126US
REV	IN ACCORDANCE WITH ECN	EFFECTIVE DATE	REVISED BY	DATE	REFERENCE MODEL
DRW BY: ALS	DRAWING STATUS: Released				TOLERANCES DO NOT APPLY
DATE: 4/10/25	PRODUCTION APPROVED FOR RELEASED STATUS ONLY				UNITS
					mm (inch)
					SIZE
					D
					REV
					A
					FORM FEG036, Rev. C