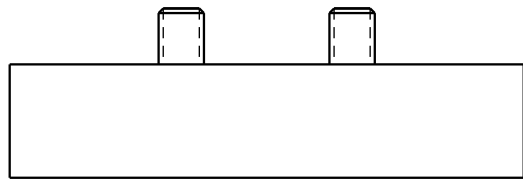




I LCM41582000 REV. A ECN4112



<b>CAD CONTROL DRAWING</b>		 VEKTEK, INC. 1334 E. SIXTH AVE. P.O. BOX 625 EMPORIA, KS. 66801 U.S.A.
		

A	4112	RELEASE	JDW	02/21/20	41582000	A	PLATE, MOUNT, MM PORTS, M6 SHCS	
REV	IN ACCORDANCE WITH ECN	EFFECTIVE DATE	REVISED BY	DATE	REFERENCE MODEL	REF REV		
DRW BY:	JDW	<b>DRAWING STATUS: Released</b>			TOLERANCES DO NOT APPLY	UNITS	SIZE	
DATE:	02/21/20	PRODUCTION APPROVED FOR RELEASED STATUS ONLY			DIMENSIONS ARE NOMINAL	mm [inch]	B	
							I LCM41582000	REV A
							FORM FEG036, Rev. C	