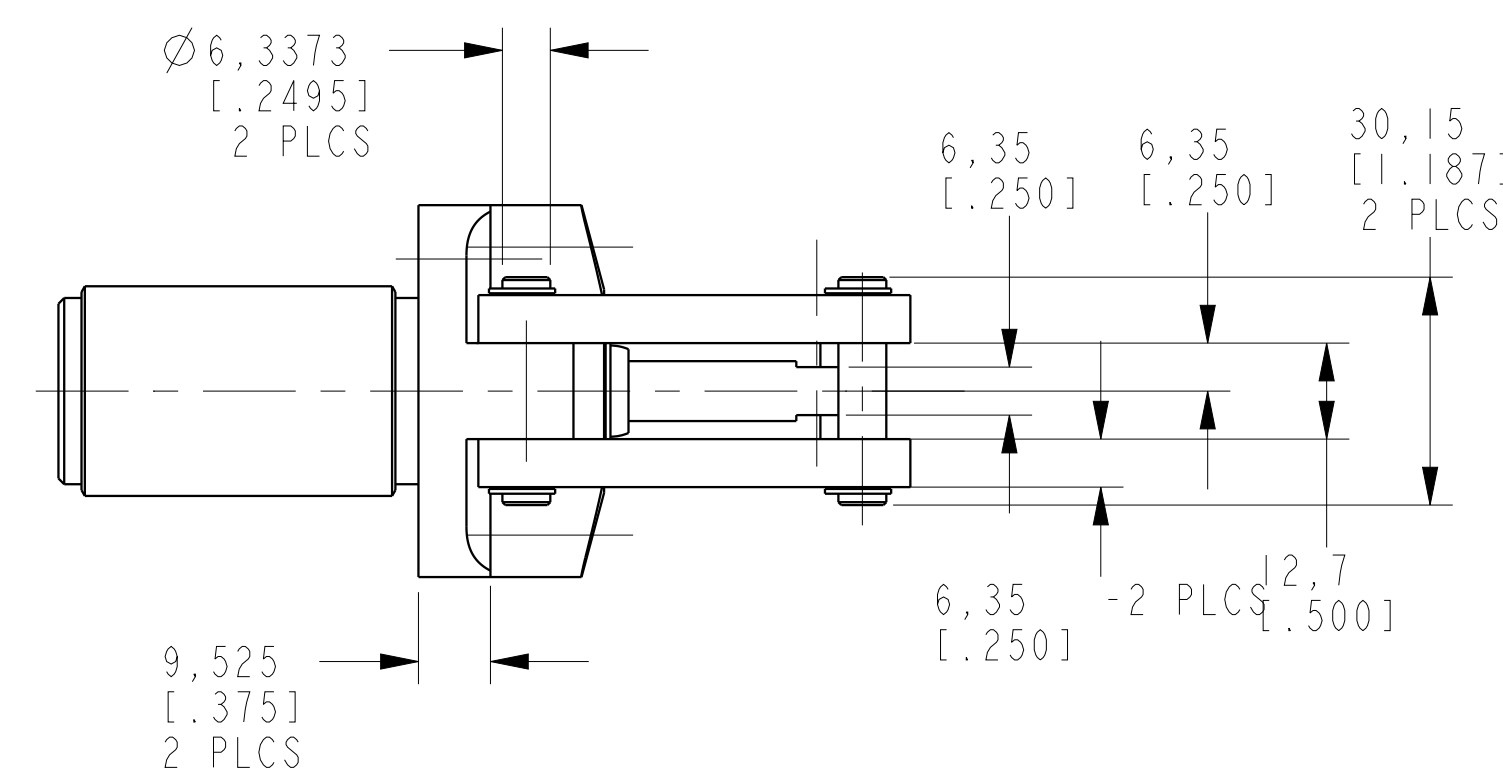
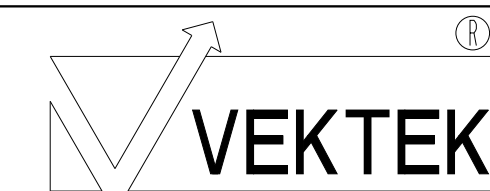


I LCM41661040 REV B ECN 3490



CAD CONTROL DRAWING



VEKTEK, INC.  
1334 E. SIXTH AVE. P.O. BOX 625  
EMPORIA, KS. 66801 U.S.A.

B	3490	RELEASE	ATHOMSEN	07-JUN-2018
REV	IN ACCORDANCE WITH ECN	EFFECTIVE DATE	REVISED BY	DATE
DRW BY:	K. ROEMER			
DATE:	08-23-06			
DRAWING STATUS: <b>Released</b>				
PRODUCTION APPROVED FOR RELEASED STATUS ONLY				

41661040	A	LC, SA, 1.5 KN
REFERENCE MODEL	REF REV	SIZE
TOLERANCES DO NOT APPLY		D
DIMENSIONS ARE NOMINAL		I LCM41661040
		REV B