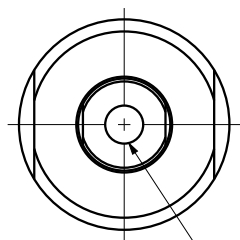
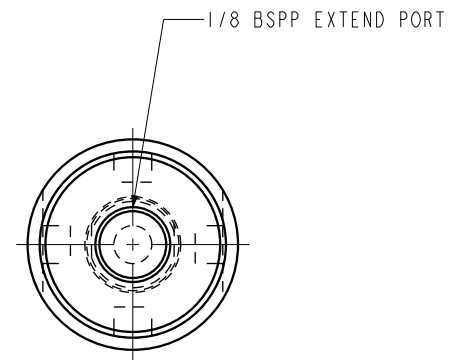
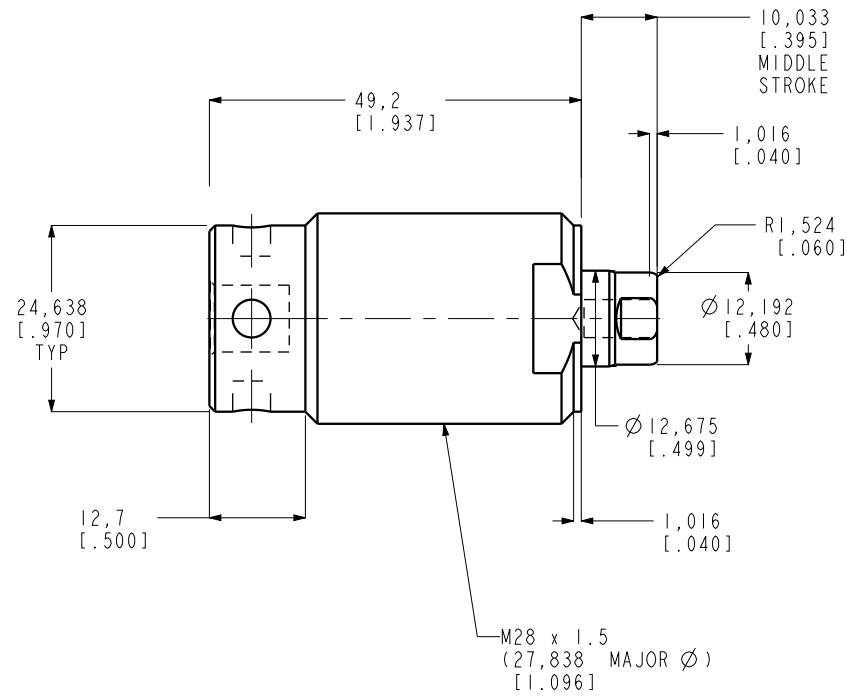


I LCM42001002 REV C ECN 4144



M6 x 1,0 ∇ 11,18 [0.44]



1/8 BSPP EXTEND PORT

CAD CONTROL DRAWING



VEKTEK, INC.
1334 E. SIXTH AVE. P.O. BOX 625
EMPORIA, KS. 66801 U.S.A.

C	4144	RELEASE	JDW	06/10/20	42001002	H	CYL, TB, 10.1 KN, 6.5 STRK, SA
REV	IN ACCORDANCE WITH ECN	EFFECTIVE DATE	REVISED BY	DATE	REFERENCE MODEL	REF REV	
DRW BY:	K. ROEMER	DRAWING STATUS: Released			TOLERANCES DO NOT APPLY	UNITS	SIZE
DATE:	03-13-06	PRODUCTION APPROVED FOR RELEASED STATUS ONLY			DIMENSIONS ARE NOMINAL	mm [inch]	B
					I LCM42001002	REV	C

FORM FEG036, Rev. C

SHEET 1 OF 1