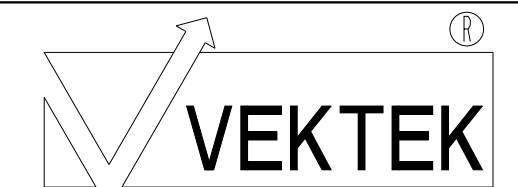
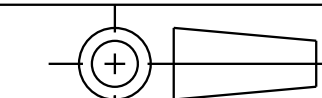


ILCM42011005 REV C ECN 3531

CAD CONTROL DRAWING



VEKTEK, INC.
1334 E. SIXTH AVE. P.O. BOX 625
EMPORIA, KS. 66801 U.S.A.



| | | | | | | | |
|---------|------------------------|--|------------|----------|-------------------------|-----------|---------------------------------|
| C | 3531 | RELEASE | NPETERS | 07/17/18 | 42011005 | K | CYL, BB, 39.9 KN, 12.5 STRK, SA |
| REV | IN ACCORDANCE WITH ECN | EFFECTIVE DATE | REVISED BY | DATE | REFERENCE MODEL | REF REV | |
| DRW BY: | K. ROEMER | DRAWING STATUS: Released | | | TOLERANCES DO NOT APPLY | UNITS | SIZE |
| DATE: | 05-24-06 | PRODUCTION APPROVED FOR RELEASED STATUS ONLY | | | DIMENSIONS ARE NOMINAL | mm (inch) | D ILCM42011005 REV C |