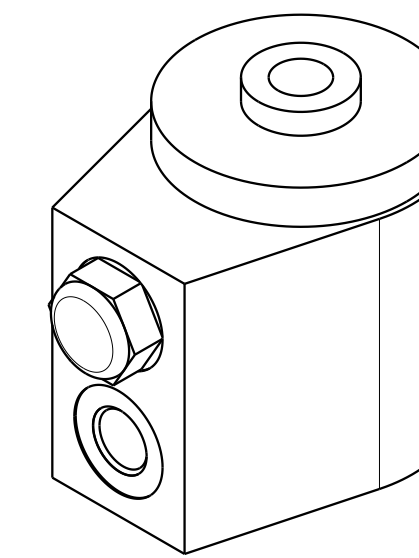
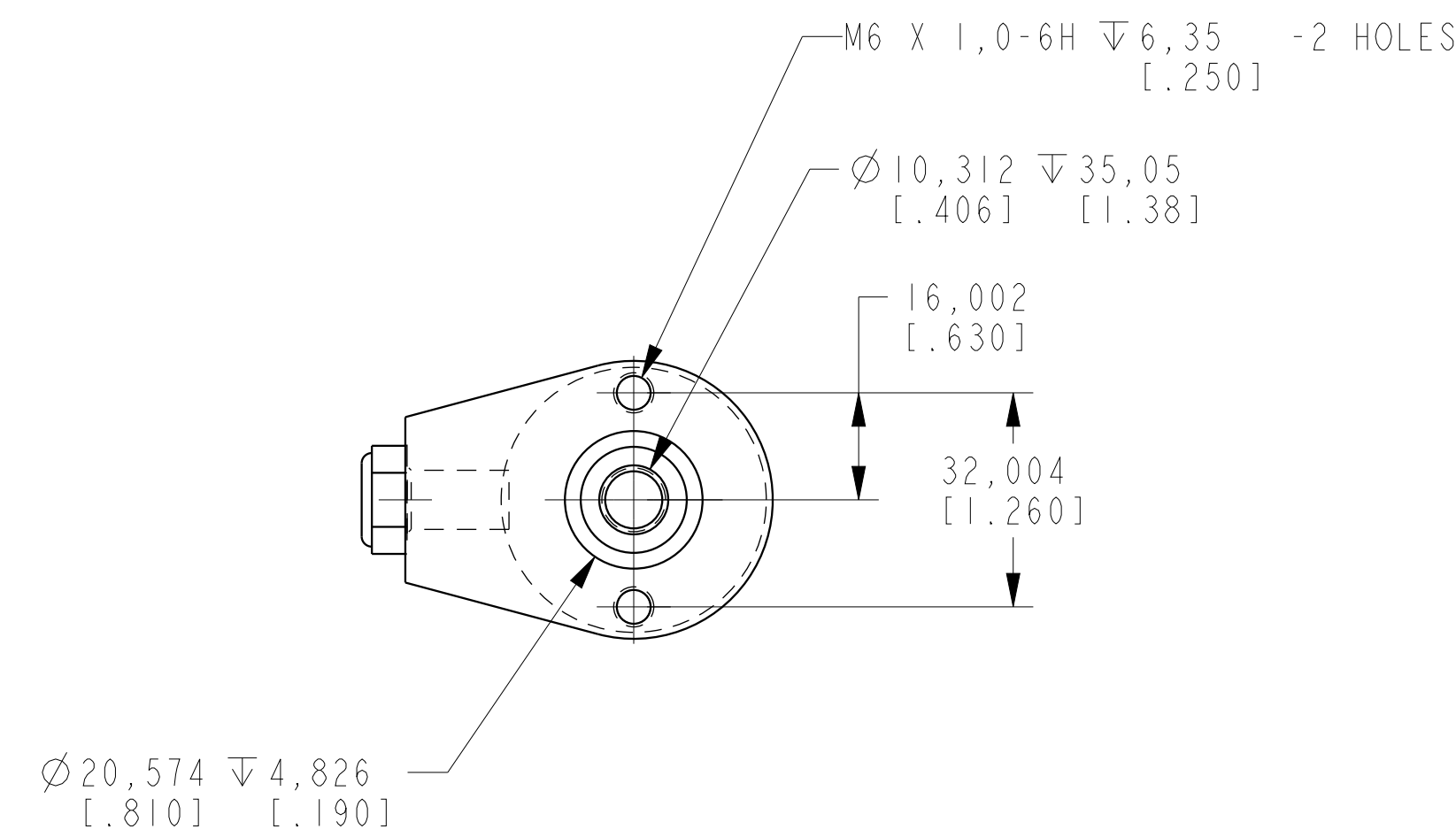


1

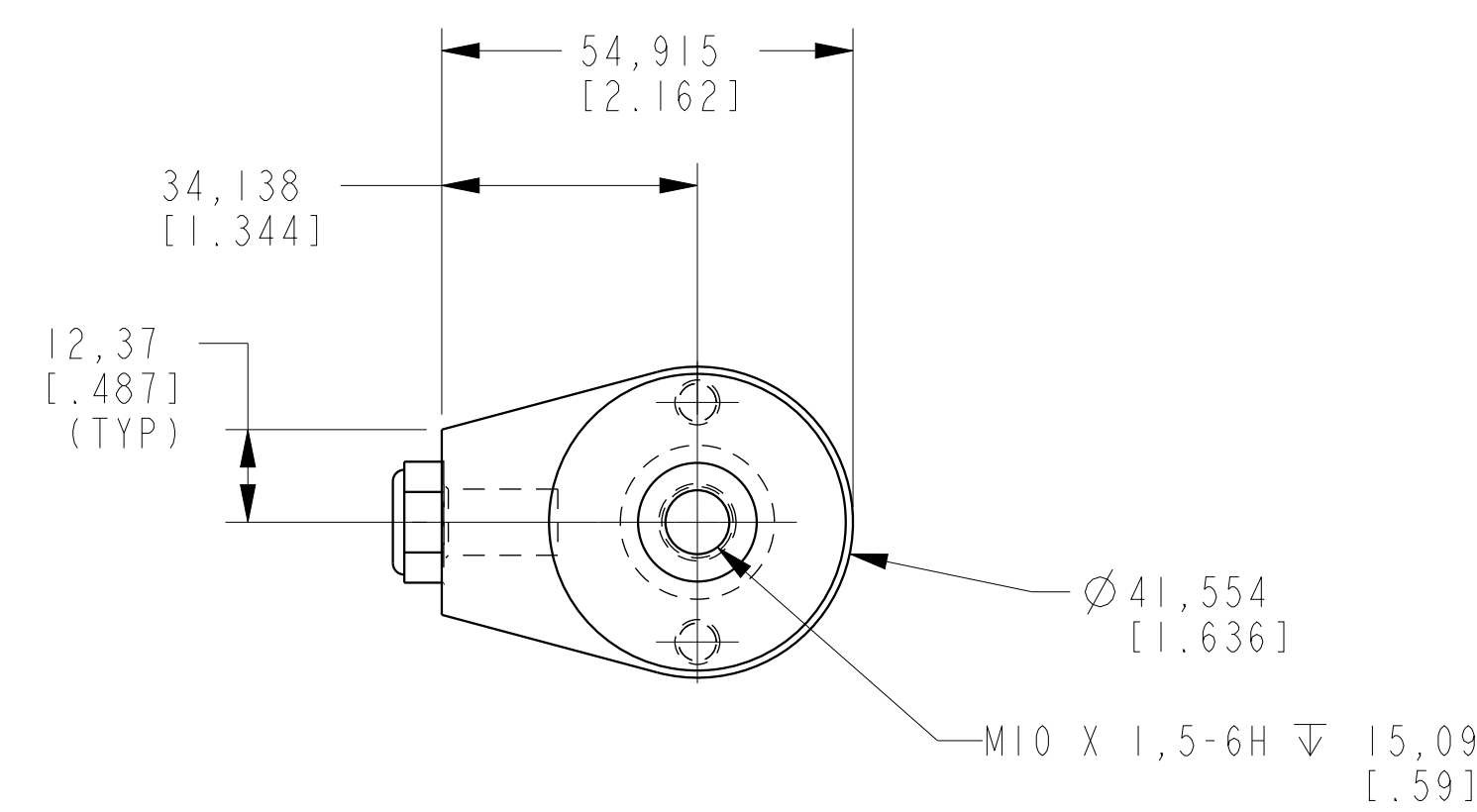
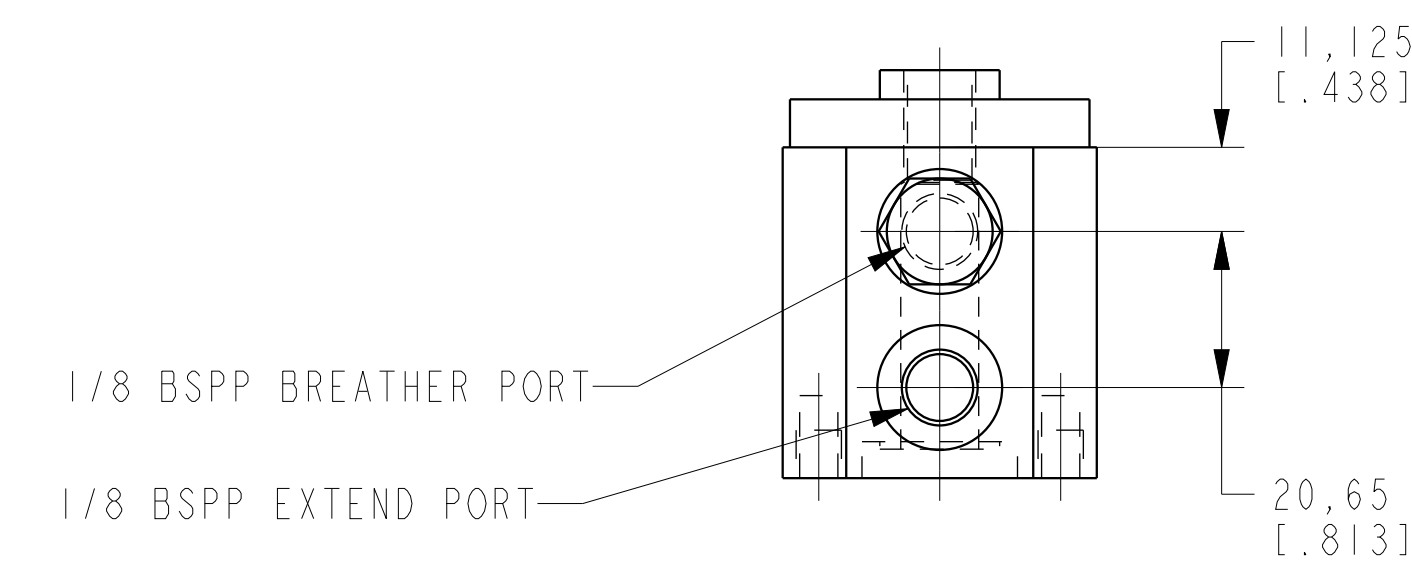
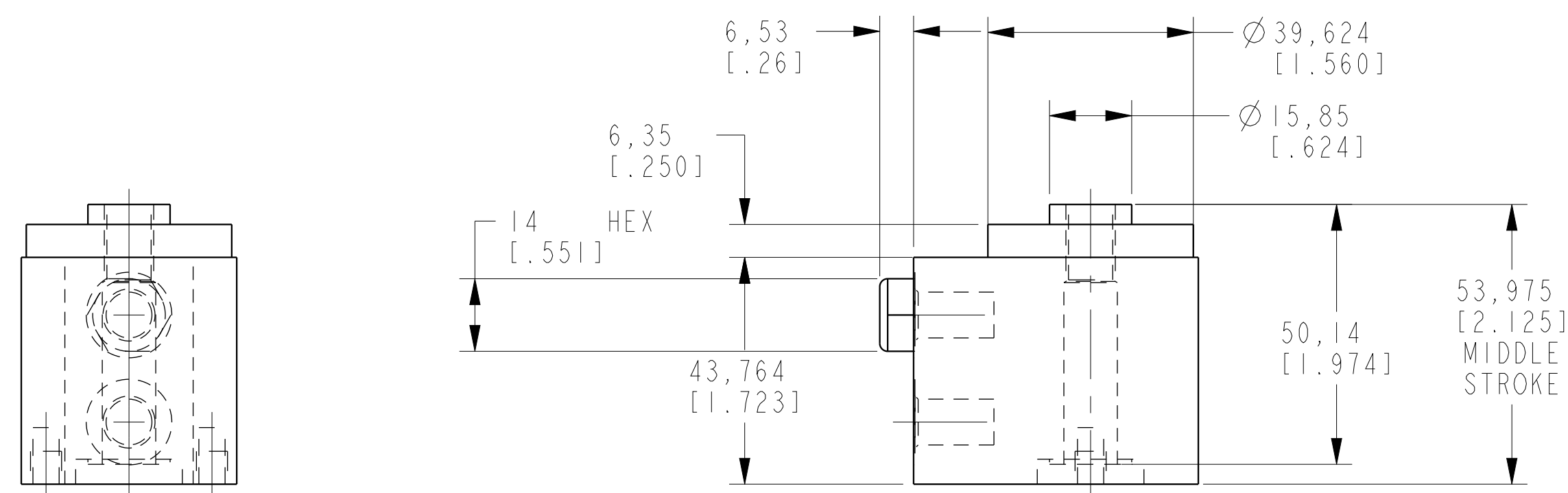
2

3

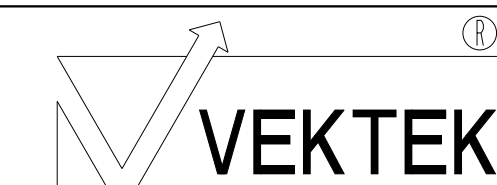
4



ILCM42021000 REV B ECN 3531



CAD CONTROL DRAWING



VEKTEK, INC.  
 1334 E. SIXTH AVE. P.O. BOX 625  
 EMPORIA, KS. 66801 U.S.A.

B	3531	RELEASE	NPETERS	07/17/18	42021000	L	CYL, HR, 20.6 KN, SA
REV	IN ACCORDANCE WITH ECN	EFFECTIVE DATE	REVISED BY	DATE	REFERENCE MODEL	REF REV	---
DRW BY:	K. ROEMER	DRAWING STATUS: <b>Released</b>			TOLERANCES DO NOT APPLY	UNITS	SIZE
DATE:	05-26-06	PRODUCTION APPROVED FOR RELEASED STATUS ONLY			DIMENSIONS ARE NOMINAL	mm (inch)	D
					ILCM42021000	REV	B

2

3

4

SHEET 1 OF 1