

1

2

3

4

D

D

C

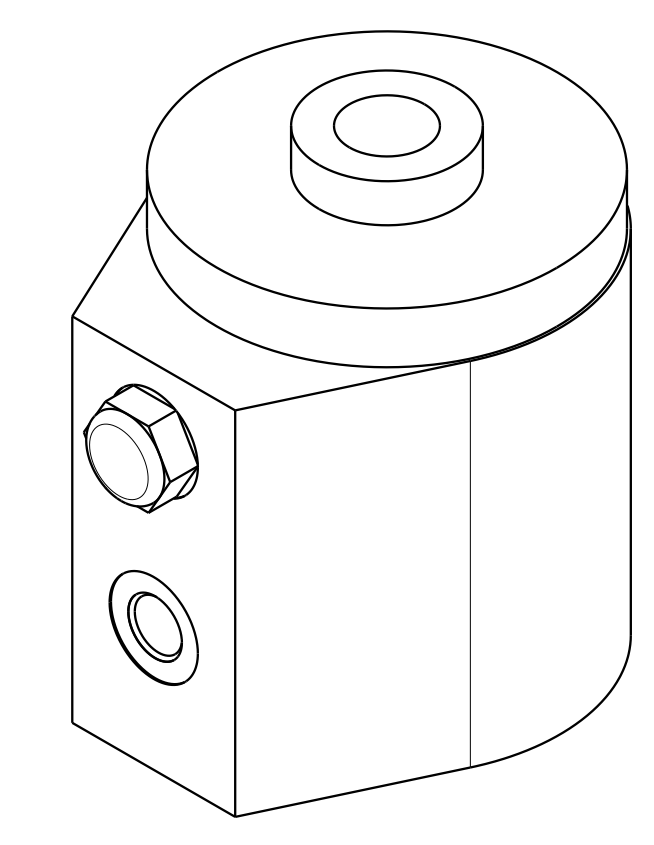
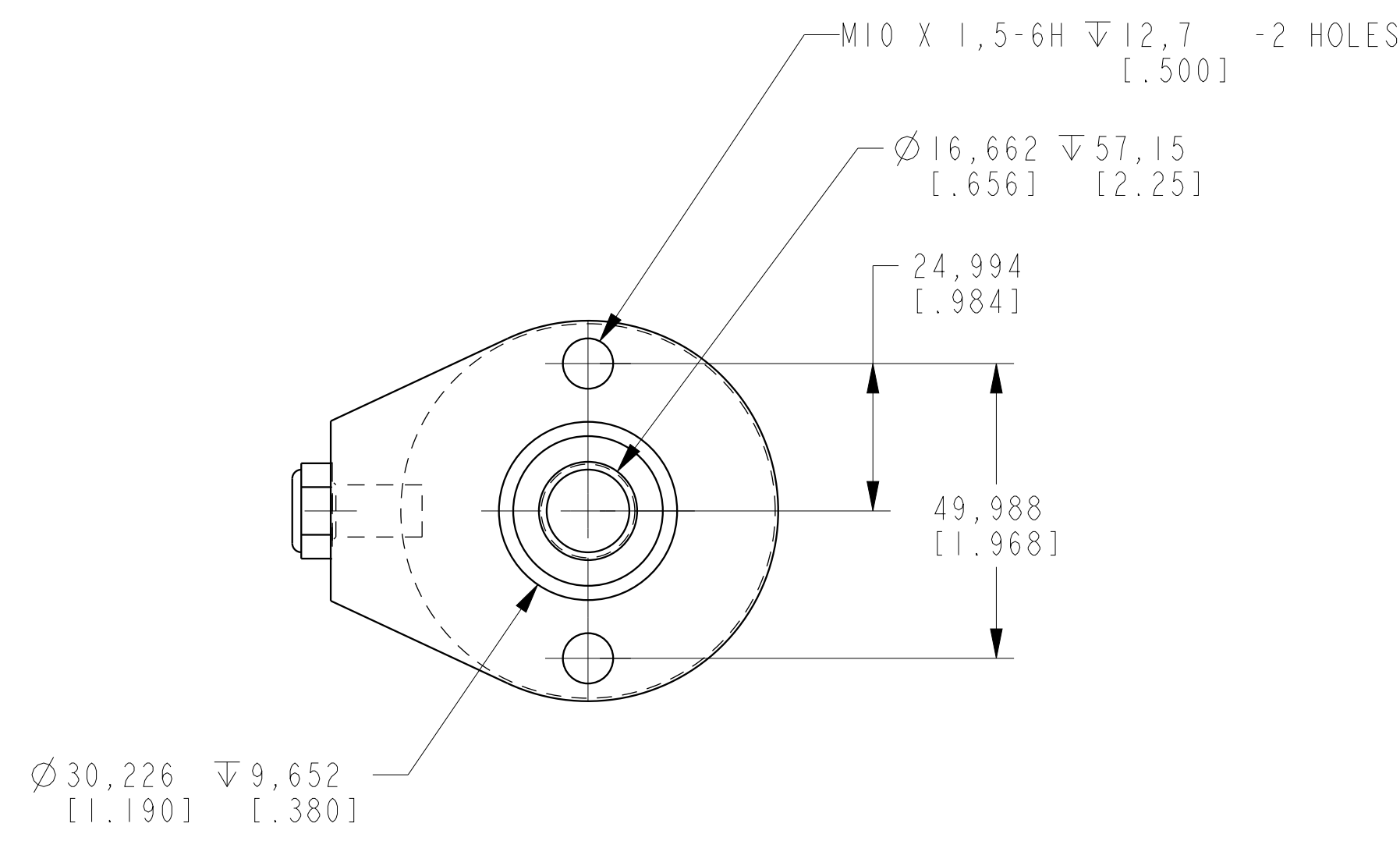
C

B

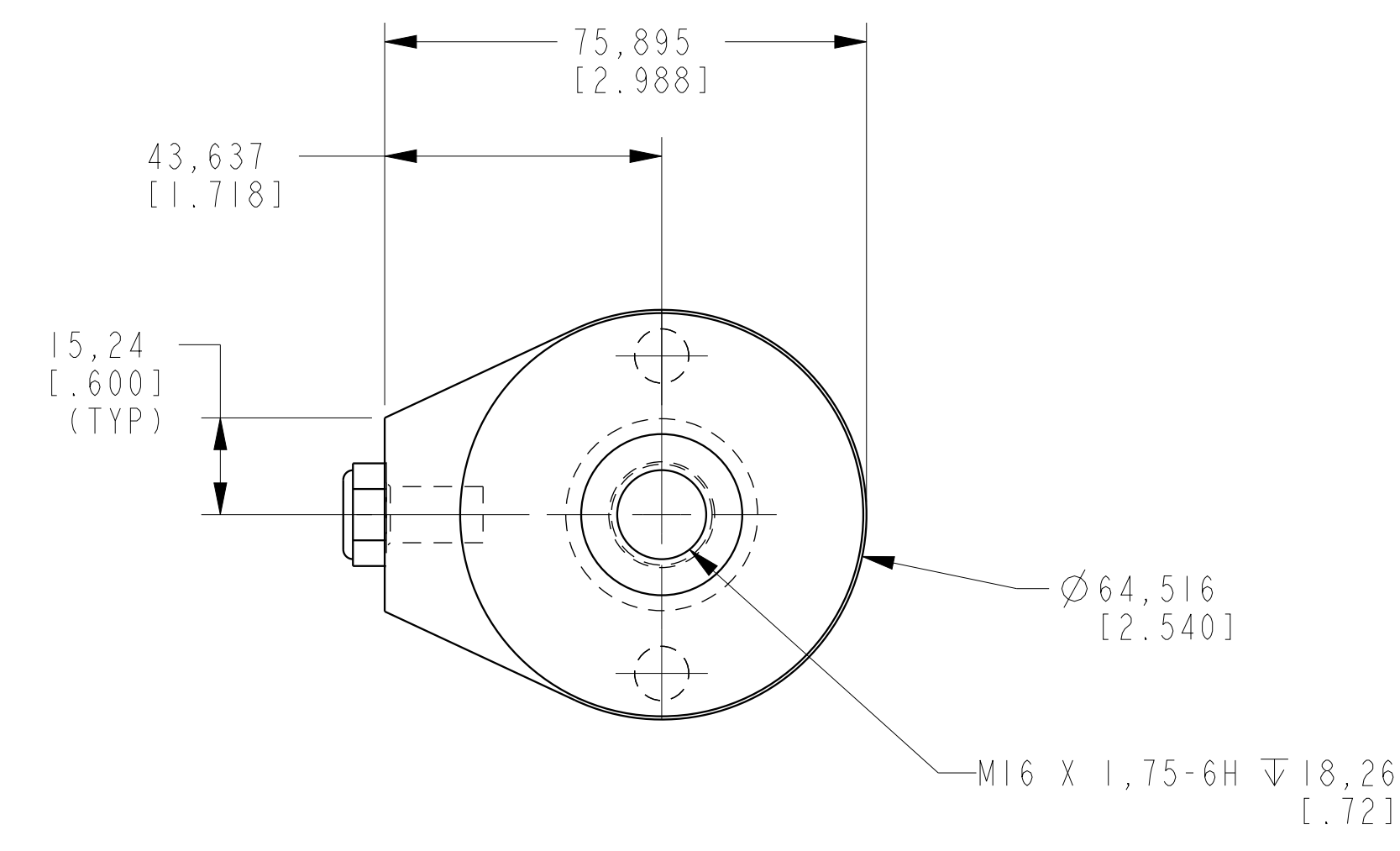
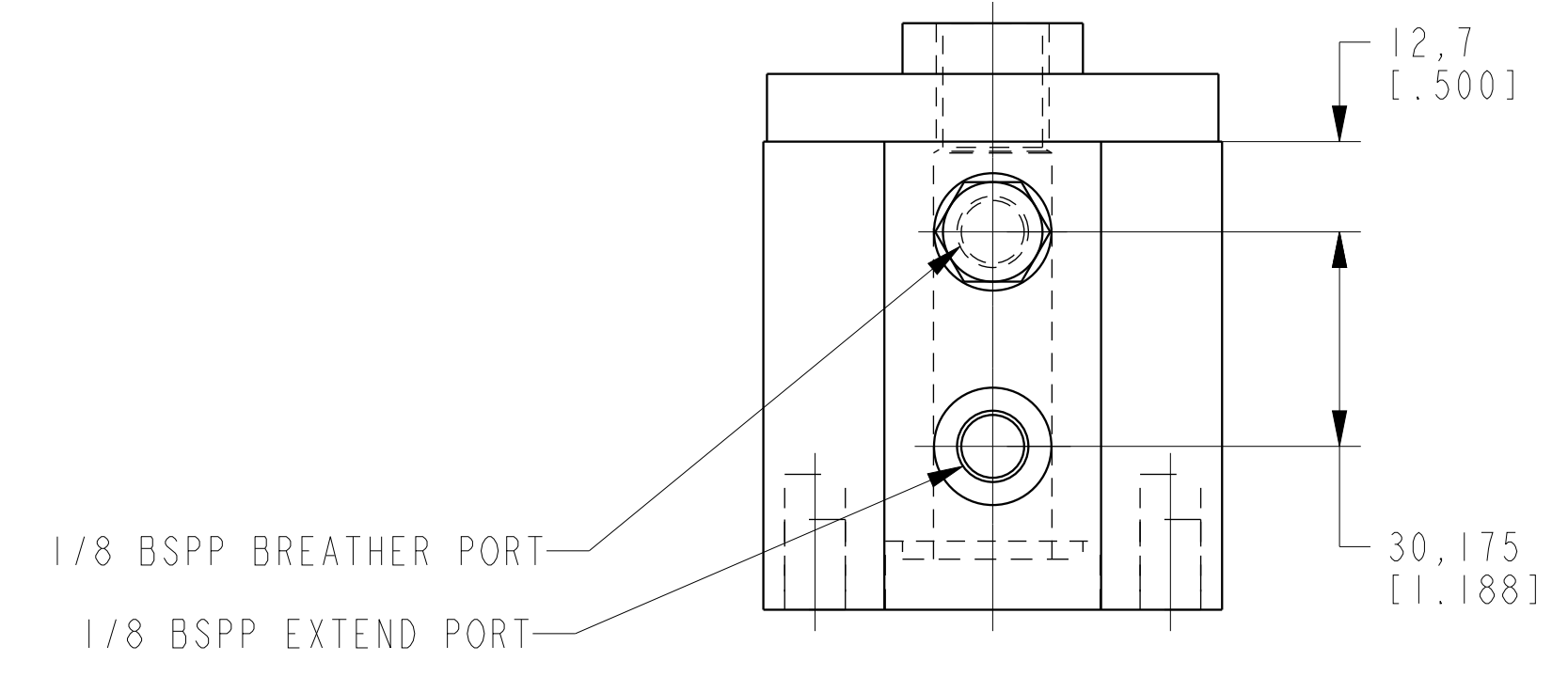
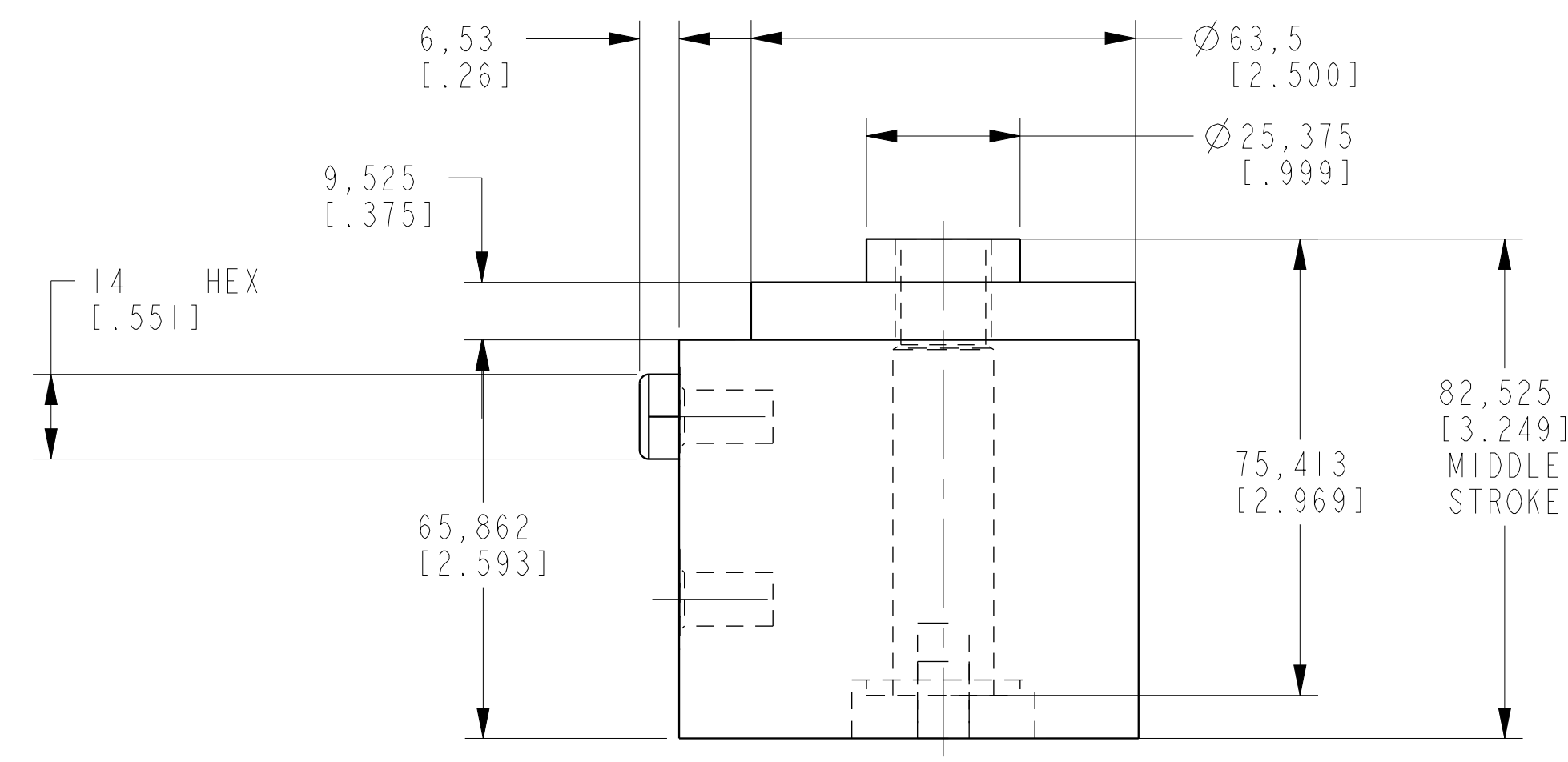
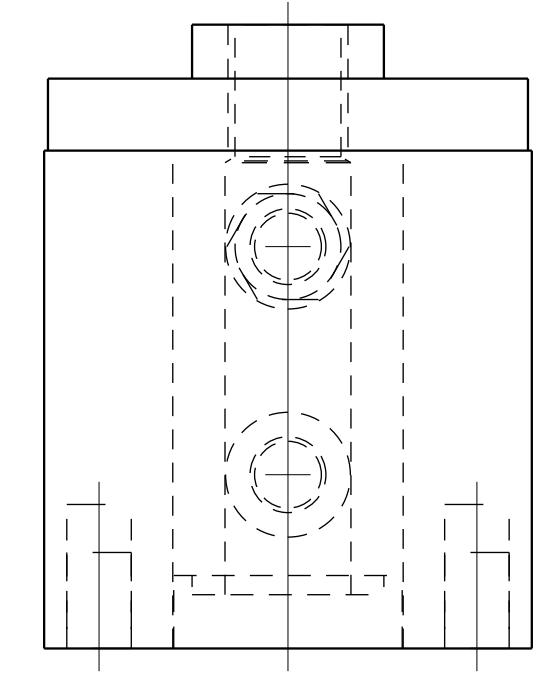
B

A

A



ILCM42021002 REV B ECN 3531



CAD CONTROL DRAWING



VEKTEK, INC.
 1334 E. SIXTH AVE. P.O. BOX 625
 EMPORIA, KS. 66801 U.S.A.

| | | | | | | | |
|---------|------------------------|--|------------|----------|-------------------------|-----------|----------------------|
| B | 3531 | RELEASE | NPETERS | 07/17/18 | 42021002 | L | CYL, HR, 53.2 KN, SA |
| REV | IN ACCORDANCE WITH ECN | EFFECTIVE DATE | REVISED BY | DATE | REFERENCE MODEL | REF REV | --- |
| DRW BY: | K. ROEMER | DRAWING STATUS: Released | | | TOLERANCES DO NOT APPLY | UNITS | SIZE |
| DATE: | 05-26-06 | PRODUCTION APPROVED FOR RELEASED STATUS ONLY | | | DIMENSIONS ARE NOMINAL | mm (inch) | D |
| | | | | | ILCM42021002 | REV | B |