

1

2

3

4

D

D

C

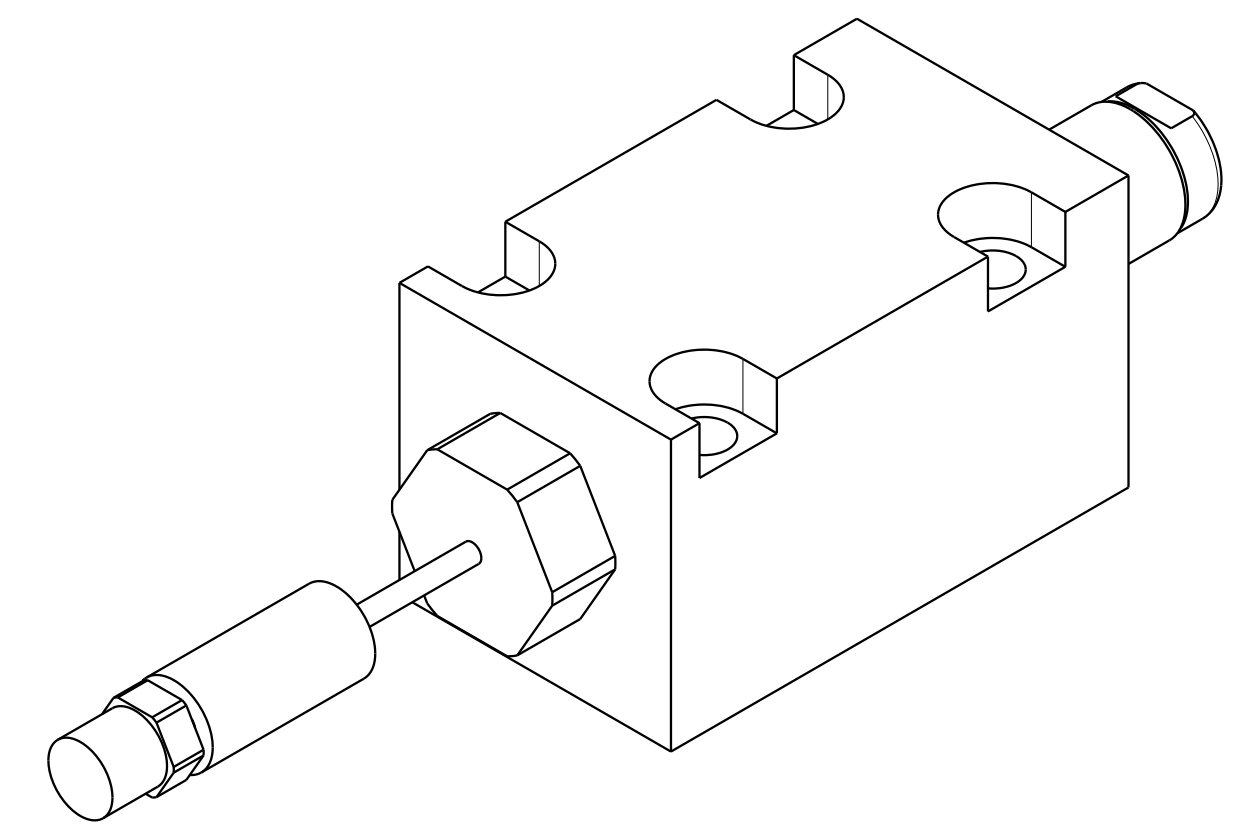
C

B

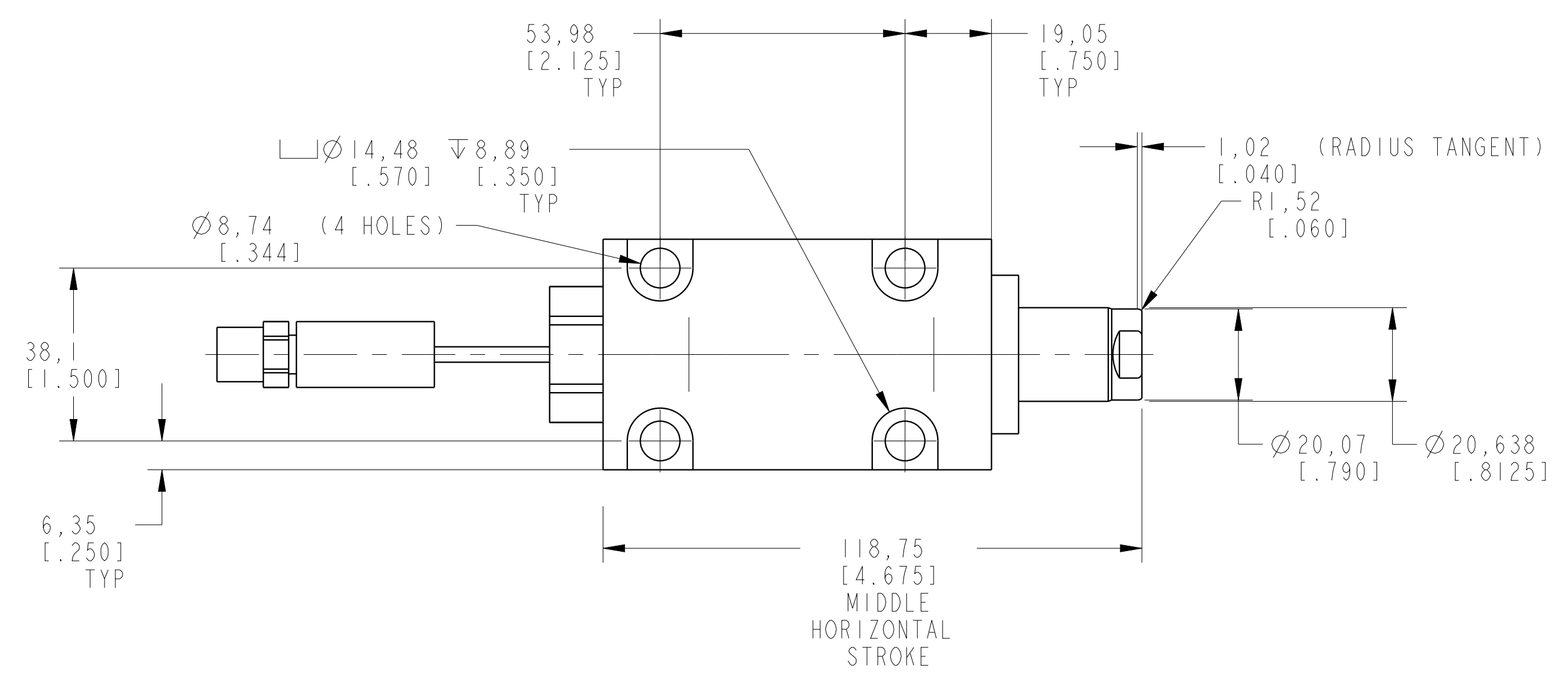
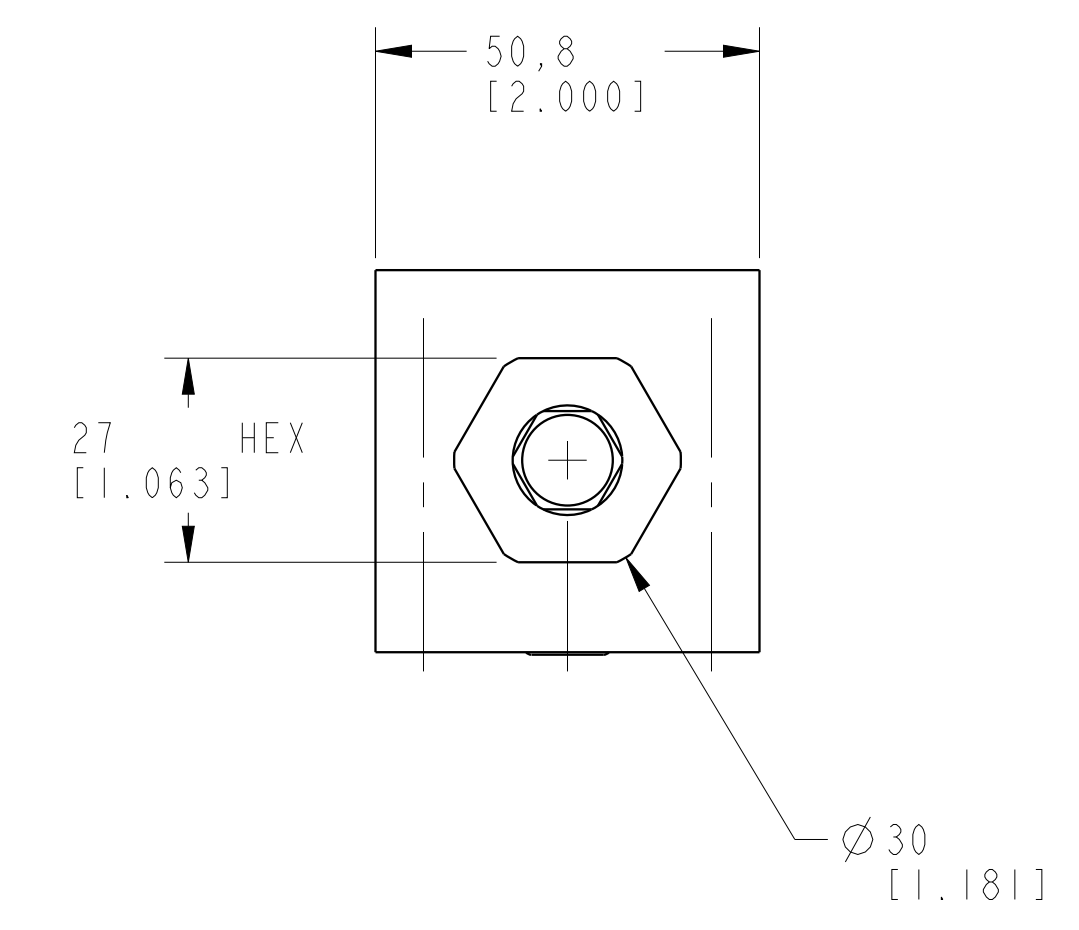
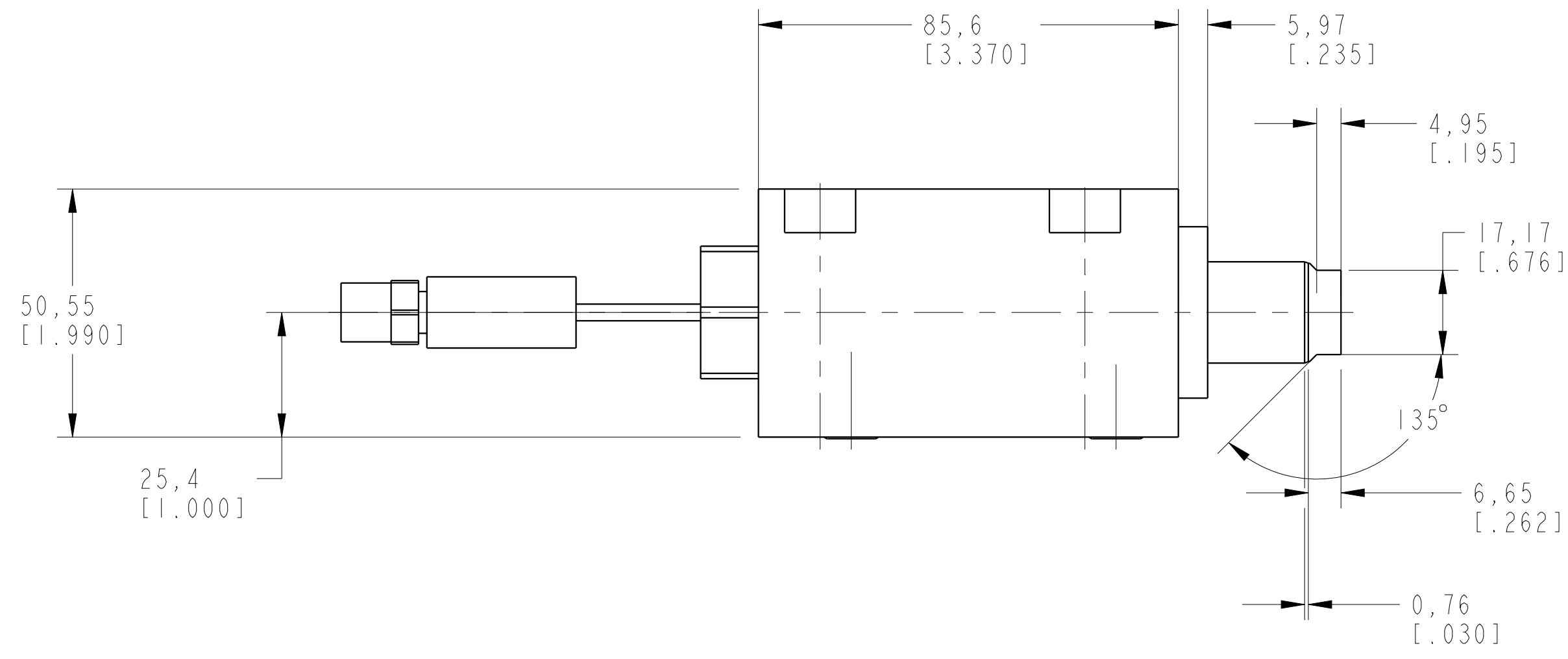
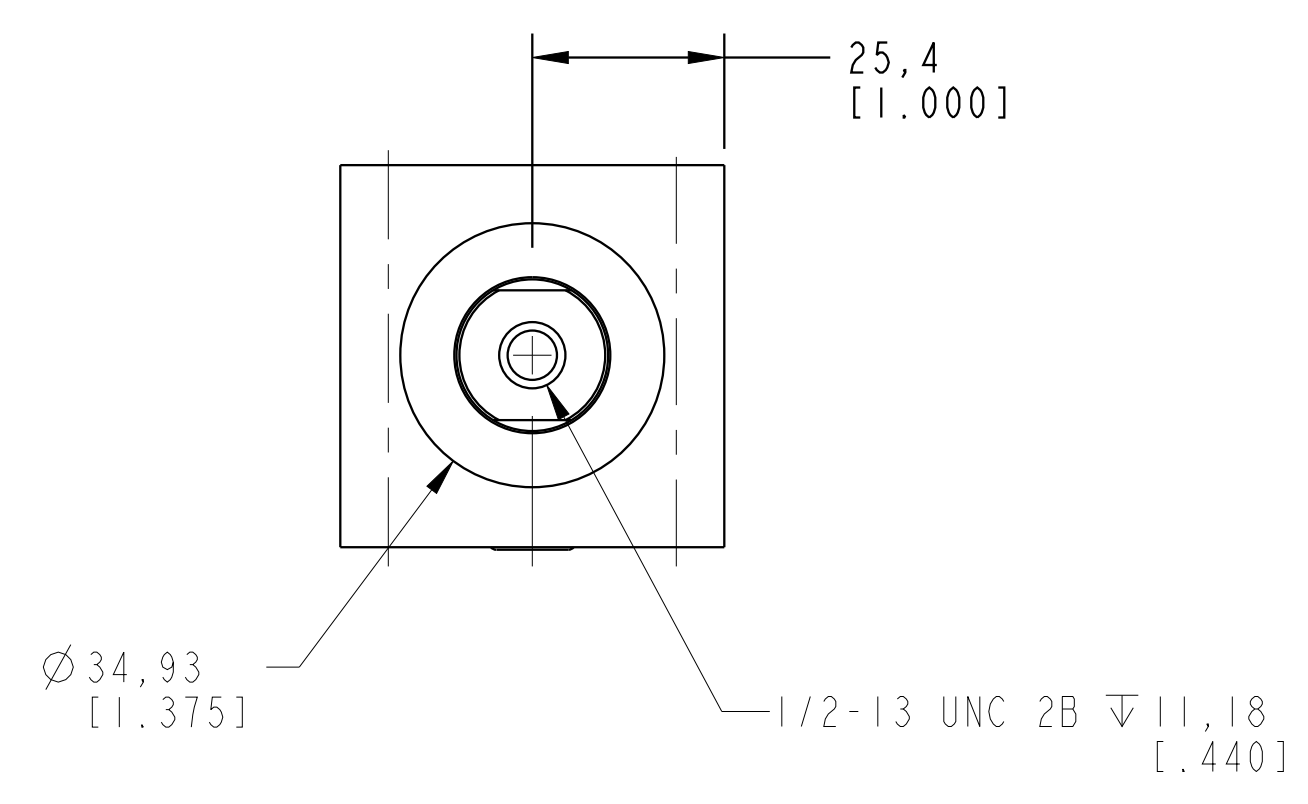
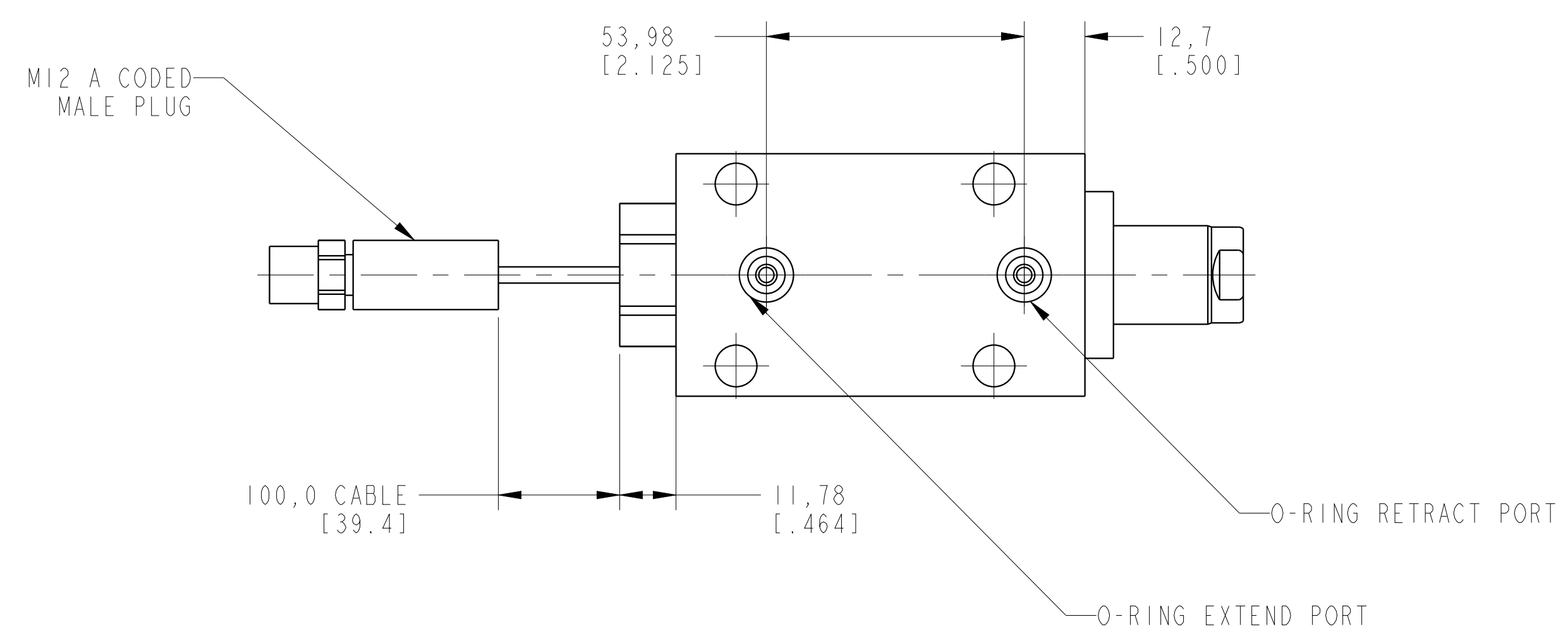
B

A

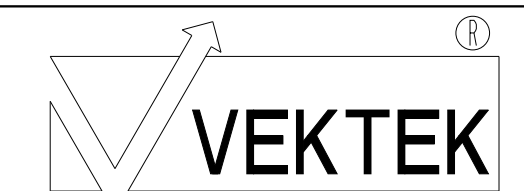
A



ILCM42112008US REV B ECN 5849



CAD CONTROL DRAWING



VEKTEK, INC.
1334 E. SIXTH AVE. P.O. BOX 625
EMPORIA, KS. 66801 U.S.A.

| | | | | | | | |
|---------|------------------------|--|------------|----------|-------------------------|-----------|---|
| B | 5849 | RELEASE | ALS | 11/11/25 | 42112008US | A | CYL, BB, MM, 17, 8KN, 38, 1STRK, DA, US |
| REV | IN ACCORDANCE WITH ECN | EFFECTIVE DATE | REVISED BY | DATE | REFERENCE MODEL | REF REV | |
| DRW BY: | ALS | DRAWING STATUS: Released | | | TOLERANCES DO NOT APPLY | UNITS | SIZE |
| DATE: | 4/10/25 | PRODUCTION APPROVED FOR RELEASED STATUS ONLY | | | DIMENSIONS ARE NOMINAL | mm (inch) | D |
| | | | | | | | ILCM42112008US |
| | | | | | | | REV B |