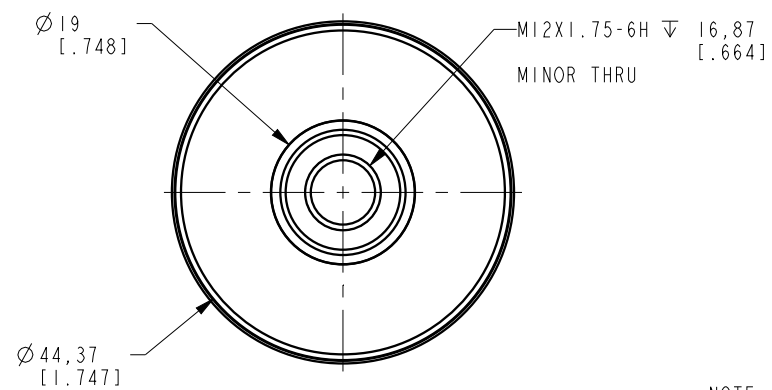
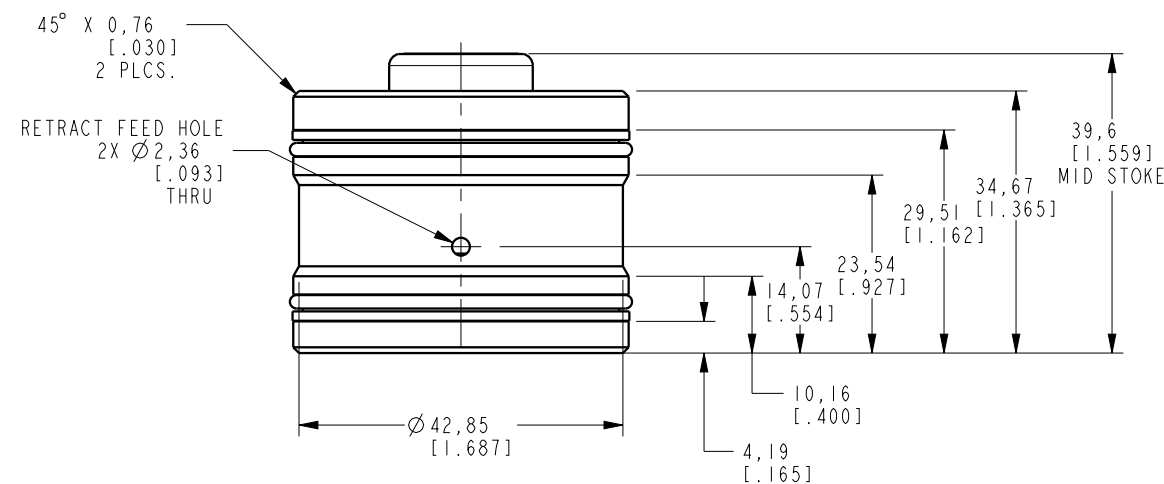


ILCM42114301 REV A ECN 3136

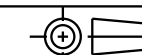


NOTE: RETURN SPRING INCLUDED WITH CYLINDER.
SPRING OMITTED FOR CLARITY

**CAD CONTROL
DRAWING**



VEKTEK, INC.
1334 E. SIXTH AVE. P.O. BOX 625
EMPORIA, KS. 66801 U.S.A.



A	3136	RELEASE	DKC	11/9/16	42114301	A	CYL, CM, PULL, 23.1kN
REV	IN ACCORDANCE WITH ECN	EFFECTIVE DATE	REVISED BY	DATE	REFERENCE MODEL	REF REV	M12X1.75 THREAD
DRW BY:	DKC	DRAWING STATUS: Released			TOLERANCES DO NOT APPLY	UNITS	SIZE
DATE:	11/1/16	PRODUCTION APPROVED FOR RELEASED STATUS ONLY			DIMENSIONS ARE NOMINAL	mm [inch]	B

SIZE	B	REV	A
FORM	FEG036, Rev. C		

SHEET 1 OF 1