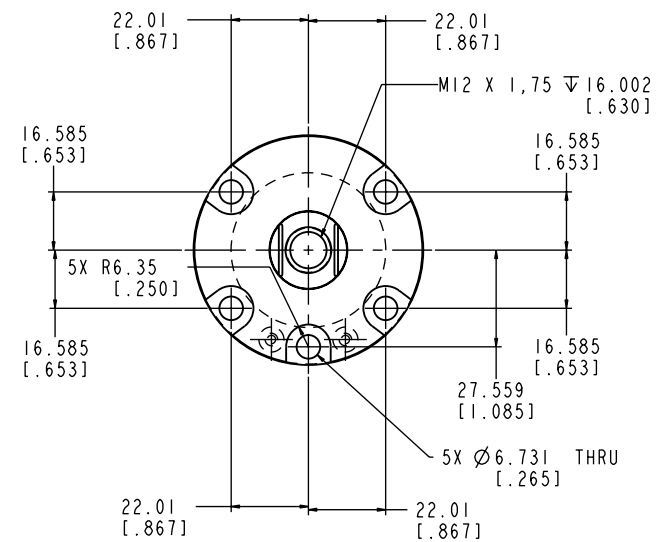
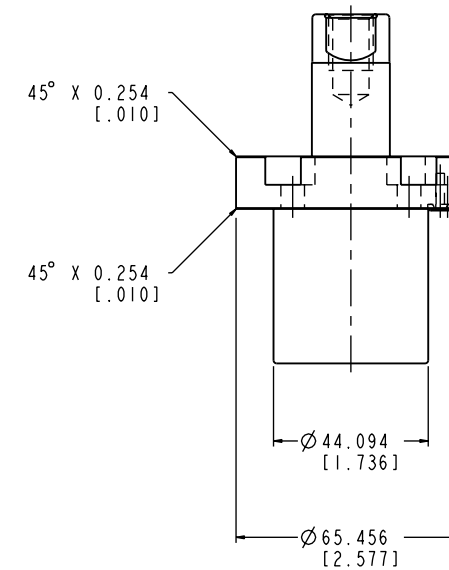
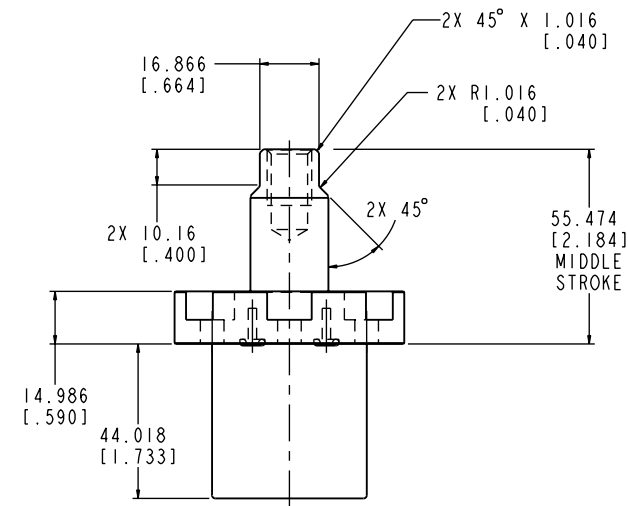
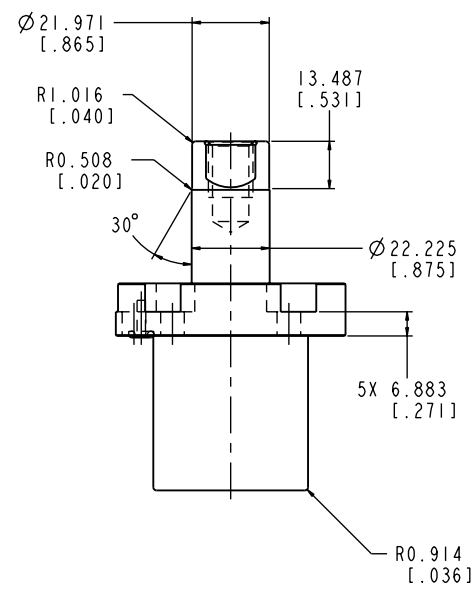


ILCM42162132 REV A ECN 2438



CAD CONTROL DRAWING



VEKTEK, INC.  
1334 E. SIXTH AVE. P.O. BOX 625  
EMPORIA, KS. 66801 U.S.A.

|         |                        |  |            |          |                         |           |                                |
|---------|------------------------|--|------------|----------|-------------------------|-----------|--------------------------------|
| A       | 2438                   | RELEASE                                      | JDW        | 10/04/12 | 42162132                | B         | CYL, TF, MM, 27KN, 15 STRK, DA |
| REV     | IN ACCORDANCE WITH ECN | EFFECTIVE DATE                               | REVISED BY | DATE     | REFERENCE MODEL         | REF REV   |                                |
| DRW BY: | JDW                    | DRAWING STATUS: <b>Released</b>              |            |          | TOLERANCES DO NOT APPLY | UNITS     | SIZE                           |
| DATE:   | 10/04/12               | PRODUCTION APPROVED FOR RELEASED STATUS ONLY |            |          | DIMENSIONS ARE NOMINAL  | mm [inch] | D ILCM42162132                 |
|         |                        |  |            |          |                         |           | REV                            |
|         |                        |  |            |          |                         |           | A                              |

FORM FEG036, Rev. B

SHEET 1 OF 1