

1

2

3

4

D

D

C

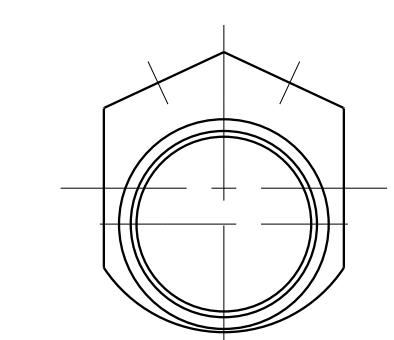
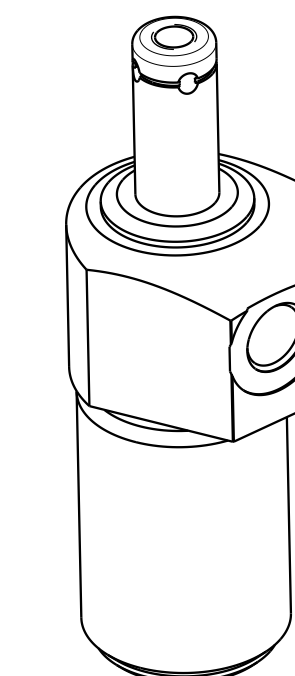
C

B

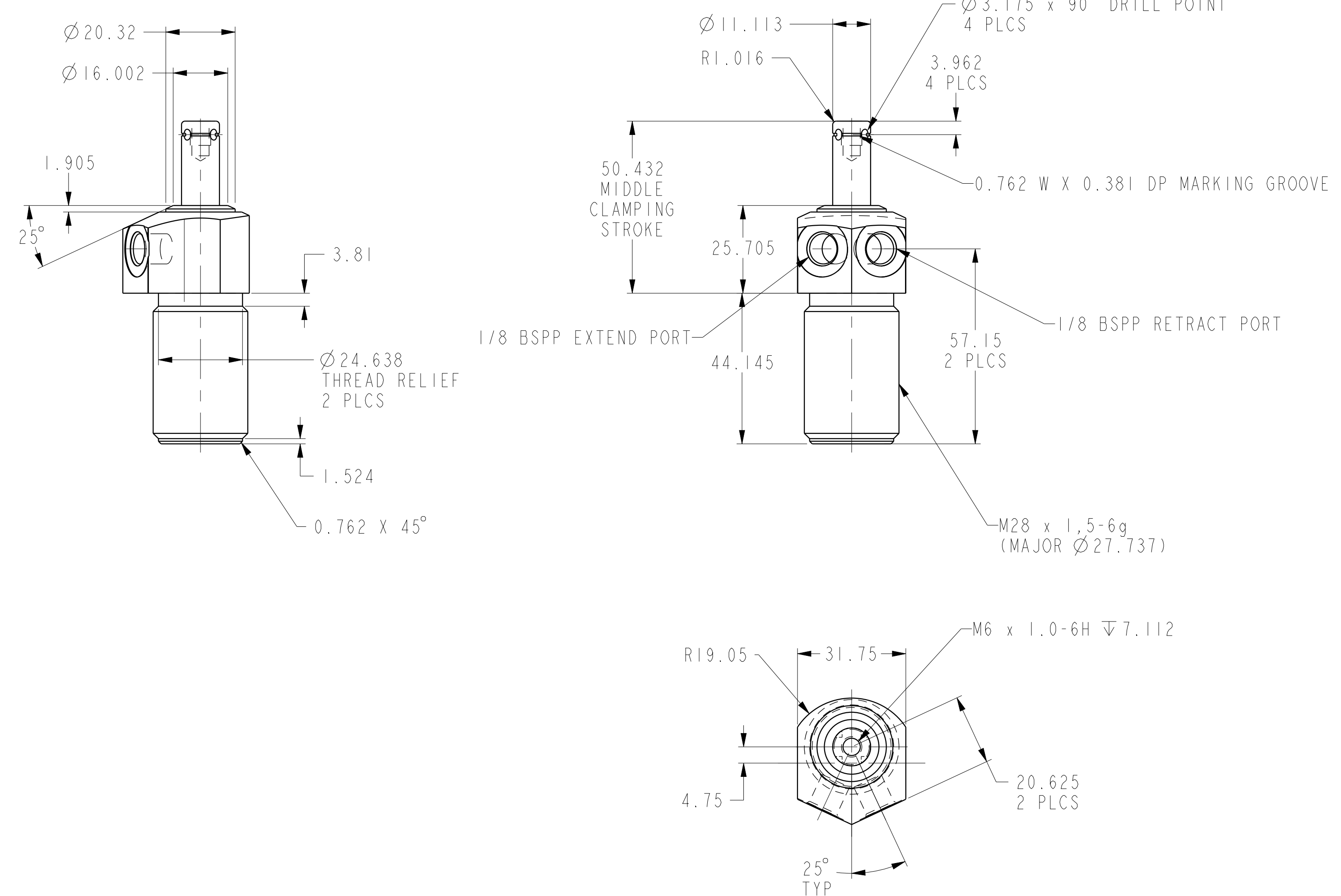
B

A

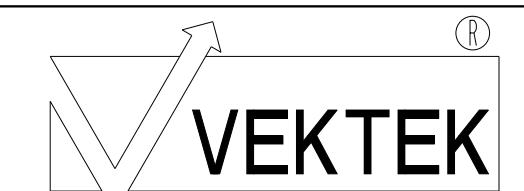
A



I LCM42502051 REV C ECN 3508



CAD CONTROL
DRAWING



VEKTEK, INC.
1334 E. SIXTH AVE. P.O. BOX 625
EMPORIA, KS. 66801 U.S.A.

| | | | | | | | |
|---------|------------------------|--|------------|-------------|---|----------|--------------------------------|
| C | 3508 | RELEASE | ATHOMSEN | 26-OCT-2018 | 42502051 | B | CYL, PP, TB, 5.3 KN/2.1 KN, DA |
| REV | IN ACCORDANCE WITH ECN | EFFECTIVE DATE | REVISED BY | DATE | REFERENCE MODEL | REF REV | ***** |
| DRW BY: | K. ROEMER | DRAWING STATUS: Released | | | TOLERANCES DO NOT APPLY DIMENSIONS ARE NOMINAL | | SIZE D |
| DATE: | 03-27-06 | PRODUCTION APPROVED FOR RELEASED STATUS ONLY | | | I LCM42502051 | REV C | |

2

3

4

SHEET 1 OF 1