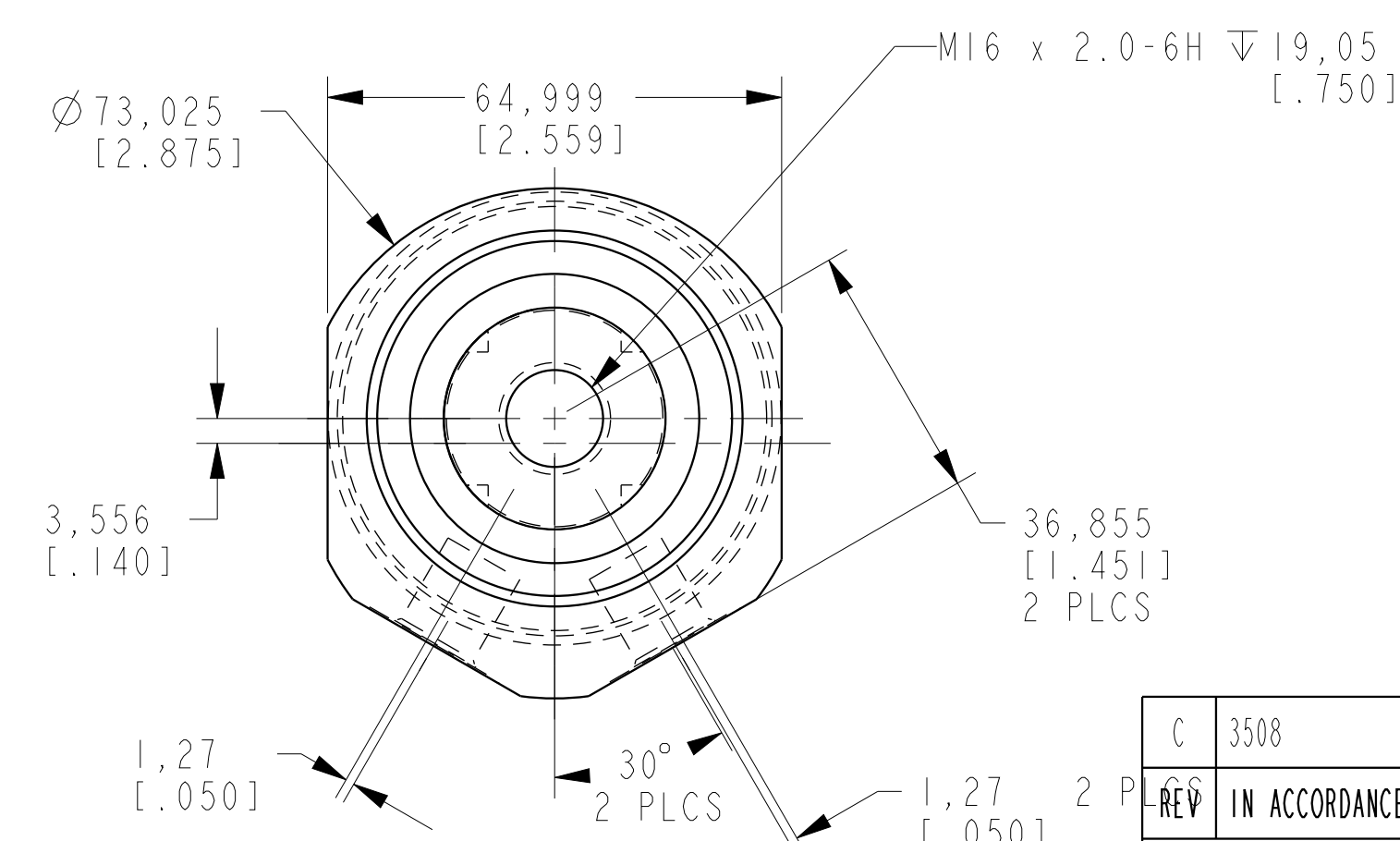


ILCM42502800 REV C ECN 3508



CAD CONTROL DRAWING		 VEKTEK, INC. 1334 E. SIXTH AVE. P.O. BOX 625 EMPORIA, KS. 66801 U.S.A.	
C 3508	RELEASE	ATHOMSEN	26-OCT-2018
REV IN ACCORDANCE WITH ECN	EFFECTIVE DATE	REVISED BY	DATE
DRW BY: K. ROEMER	DRAWING STATUS: Released		42502800
DATE: 03-27-06	PRODUCTION APPROVED FOR RELEASED STATUS ONLY		B
	TOLERANCES DO NOT APPLY DIMENSIONS ARE NOMINAL	UNITS mm (inch)	SIZE D
			ILCM42502800
			REV C