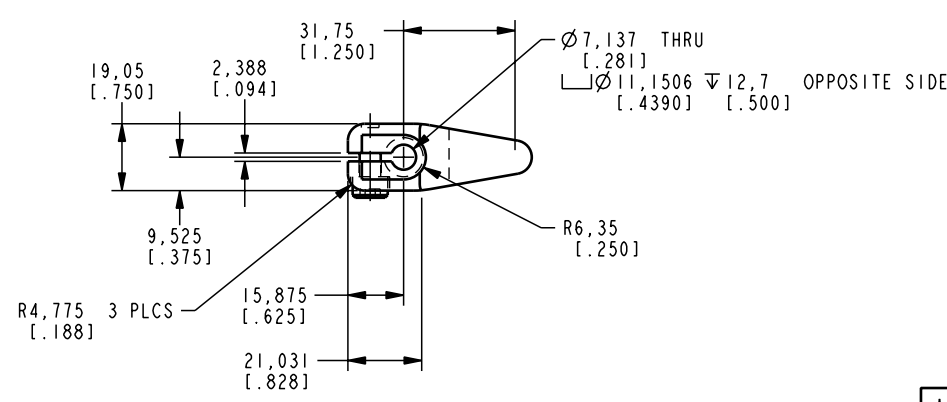
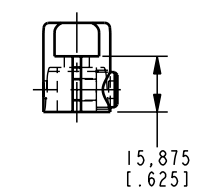
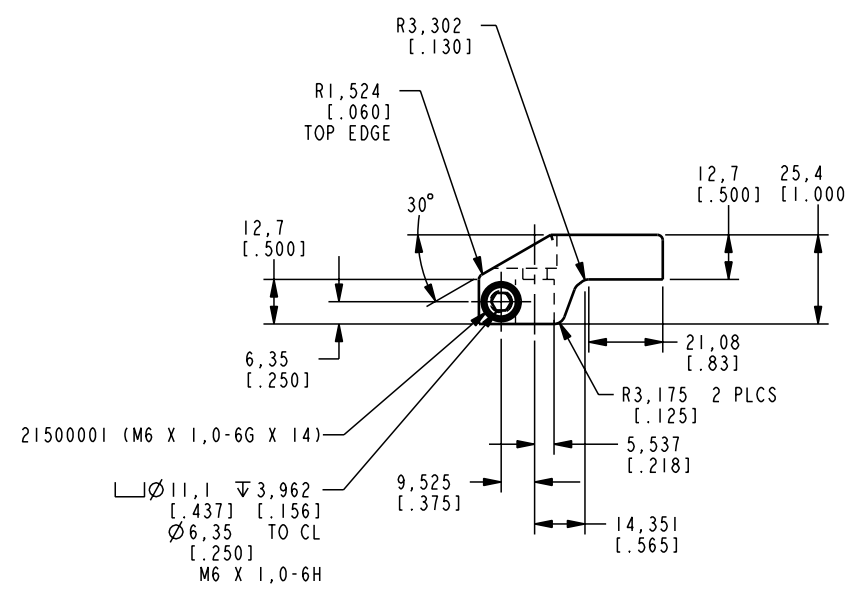



ILCM44141100 REV A ECN 1457



CAD CONTROL DRAWING



VEKTEK, INC.
1334 E. SIXTH AVE. P.O. BOX 625
EMPORIA, KS. 66801 U.S.A.

REV	A	1457	RELEASE	K. ROEMER	04-11-06	44141100	E	ARM, SC, 2 KN, UPREACH
REV	IN ACCORDANCE WITH ECN		EFFECTIVE DATE	REVISED BY	DATE	REFERENCE MODEL	REF REV	''''
DRW BY:	K. ROEMER		DRAWING STATUS: Released			TOLERANCES DO NOT APPLY	UNITS	SIZE
DATE:	04-11-06		PRODUCTION APPROVED FOR RELEASED STATUS ONLY			DIMENSIONS ARE NOMINAL	mm [inch]	D
							REV	A
							FORM FEG036, Rev. B	

SHEET 1 OF 1