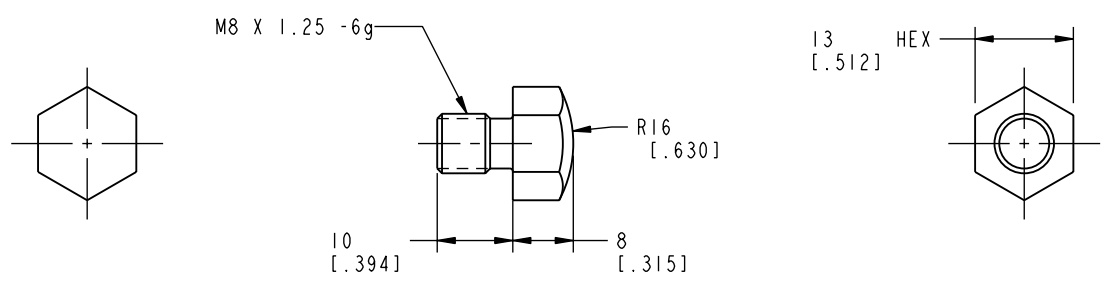


I LCM44210800 REV A ECN 2345



**CAD CONTROL  
DRAWING**



VEKTEK, INC.  
1334 E. SIXTH AVE. P.O. BOX 625  
EMPORIA, KS. 66801 U.S.A.

|         |                        |  |            |          |                         |           |                              |                     |
|---------|------------------------|--|------------|----------|-------------------------|-----------|------------------------------|---------------------|
| A       | 2345                   | RELEASE                                      | K. ROEMER  | 09/04/12 | 44210800                | A         | BOLT, CONTACT, SPHERICAL, M8 |                     |
| REV     | IN ACCORDANCE WITH ECN | EFFECTIVE DATE                               | REVISED BY | DATE     | REFERENCE MODEL         | REF REV   |                              |                     |
| DRW BY: | K. ROEMER              | DRAWING STATUS: <b>Released</b>              |            |          | TOLERANCES DO NOT APPLY | UNITS     | SIZE                         | REV                 |
| DATE:   | 09/04/12               | PRODUCTION APPROVED FOR RELEASED STATUS ONLY |            |          | DIMENSIONS ARE NOMINAL  | mm [inch] | B                            | A                   |
|         |                        |  |            |          |                         |           | I LCM44210800                | FORM FEG036, Rev. A |