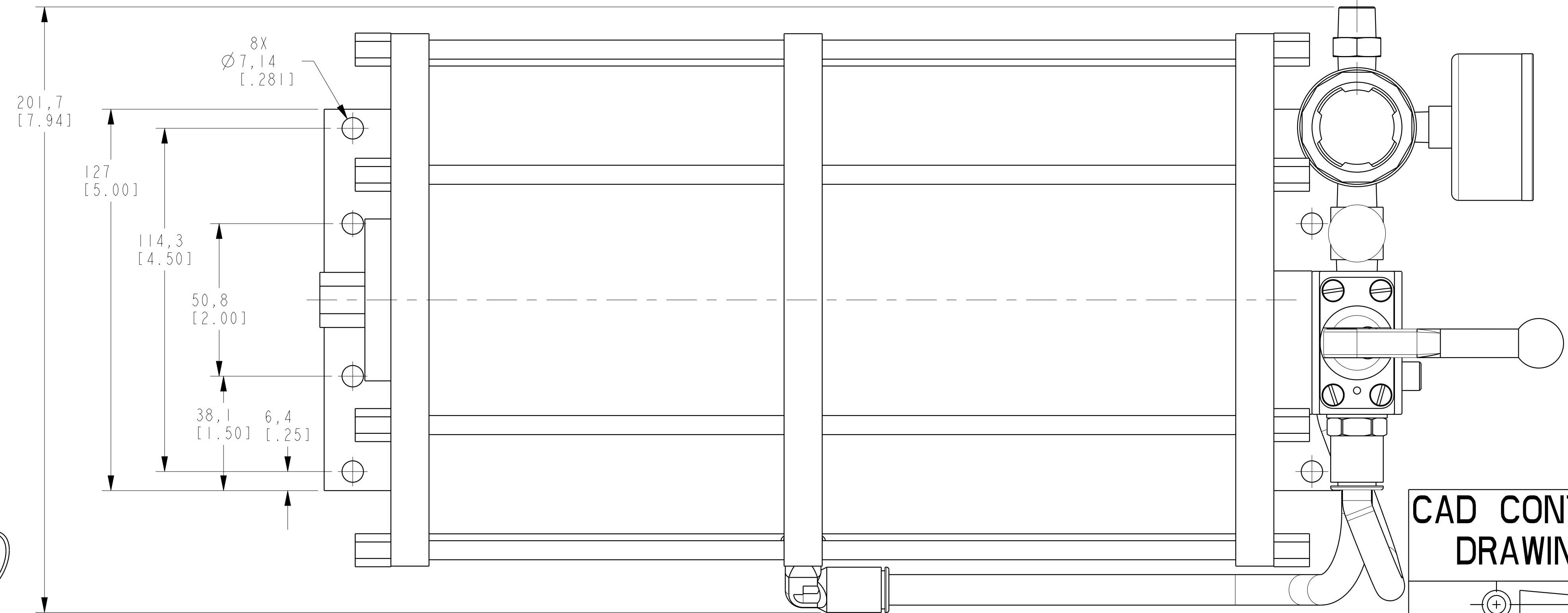
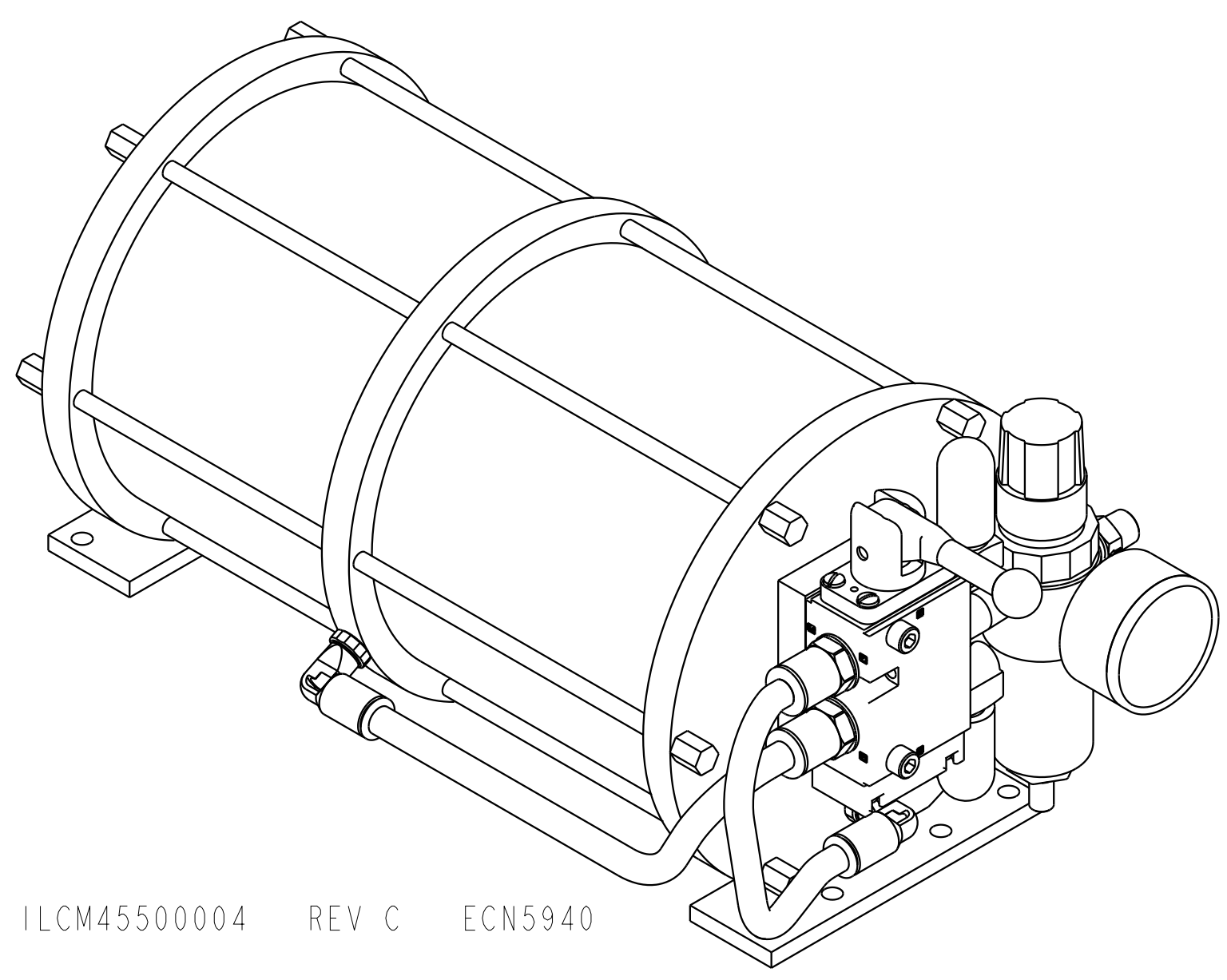
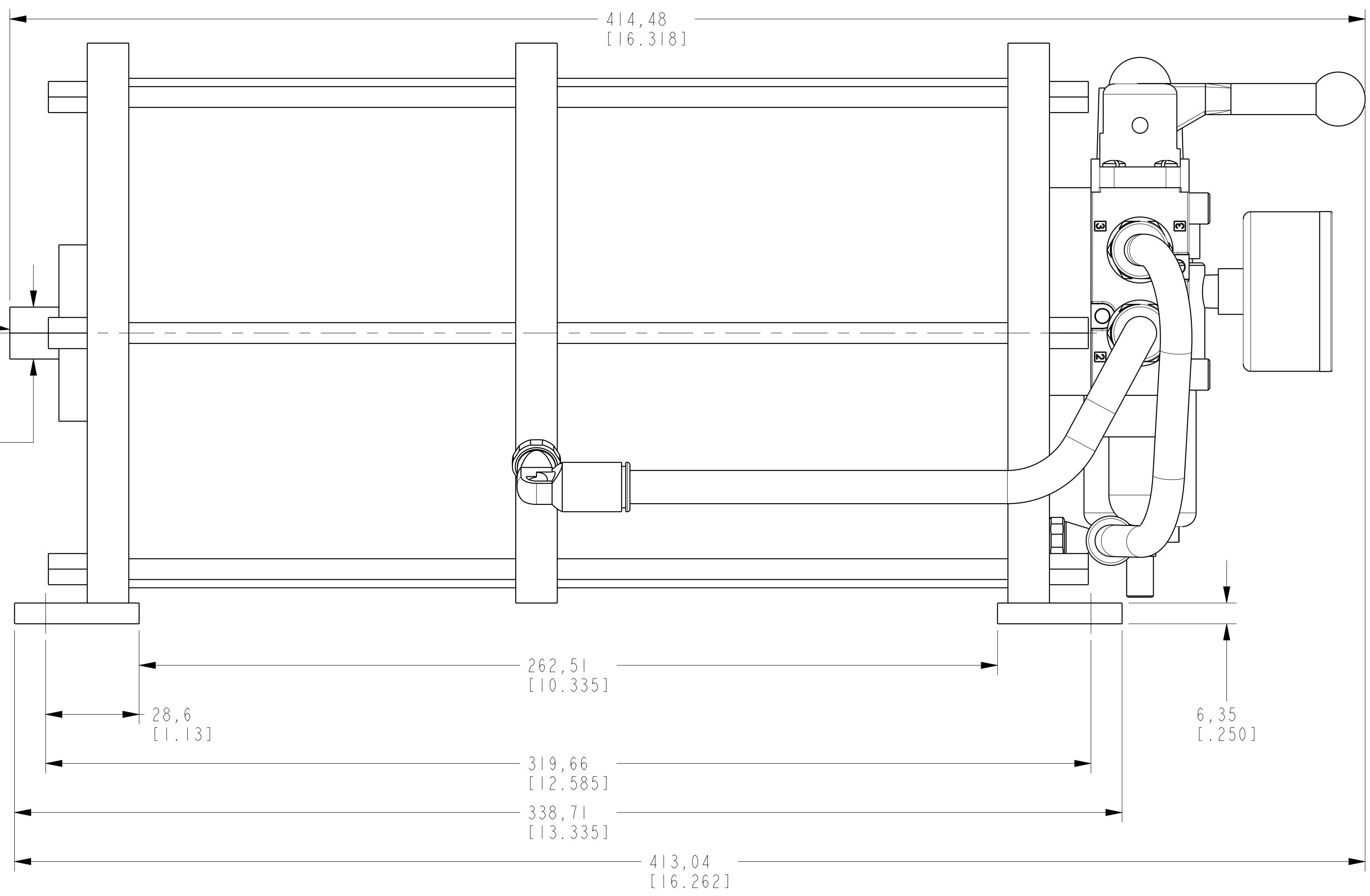
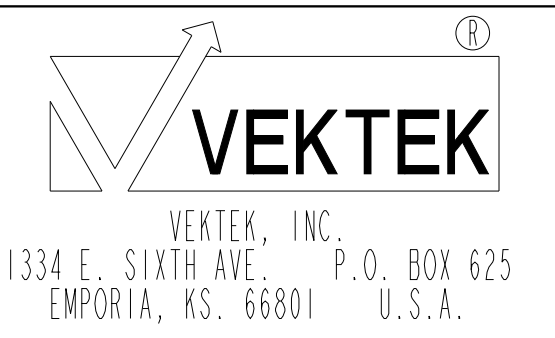


1/8 BSPP
HYDRAULIC
PRESSURE
OUTLET PORT
ON CENTERLINE

15,88
[.625]



**CAD CONTROL
DRAWING**



| | | | | | | | |
|---------|------------------------|--|------------|----------|-------------------------|-----------|-------------------------|
| C | 5940 | RELEASE | JDW | 04/17/26 | 45500004 | H | BOOSTER, A/H, 22:1, MNL |
| REV | IN ACCORDANCE WITH ECN | EFFECTIVE DATE | REVISED BY | DATE | REFERENCE MODEL | REF REV | |
| DRW BY: | K. ROEMER | DRAWING STATUS: Released | | | TOLERANCES DO NOT APPLY | UNITS | SIZE |
| DATE: | 05-30-06 | PRODUCTION APPROVED FOR RELEASED STATUS ONLY | | | DIMENSIONS ARE NOMINAL | mm (inch) | D |
| | | | | | | | LCM45500004 |
| | | | | | | | FORM FEG036, Rev. C |

ILCM45500004 REV C ECN5940