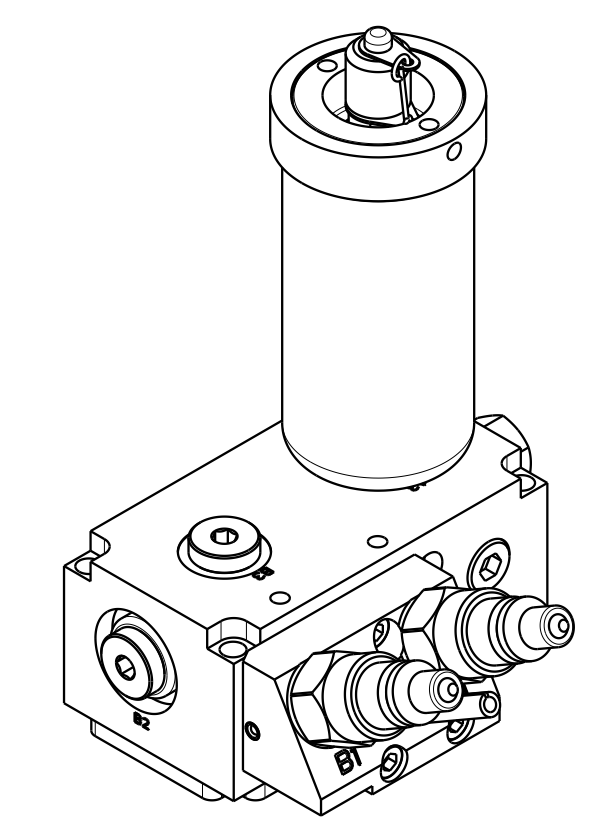
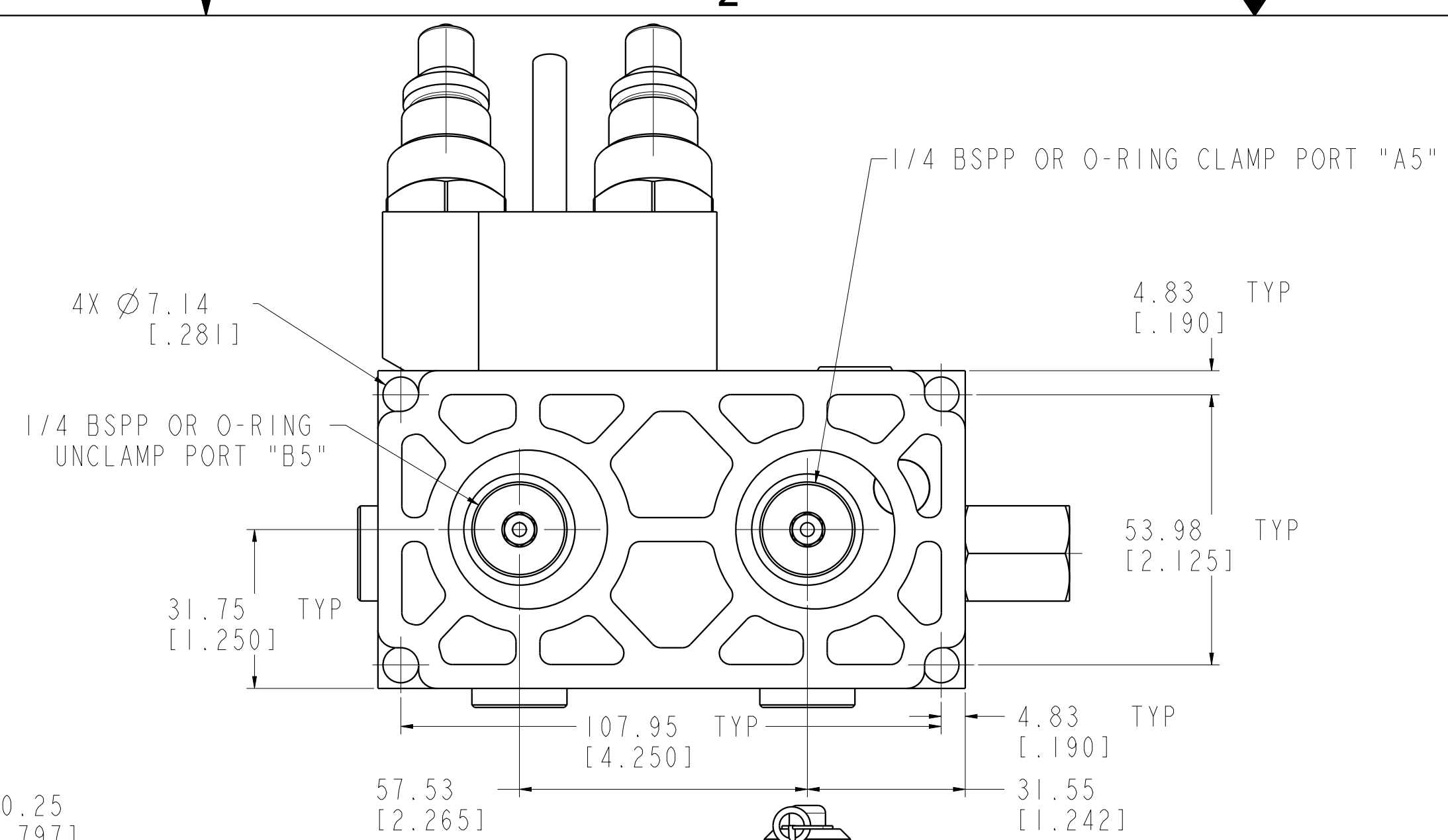


1

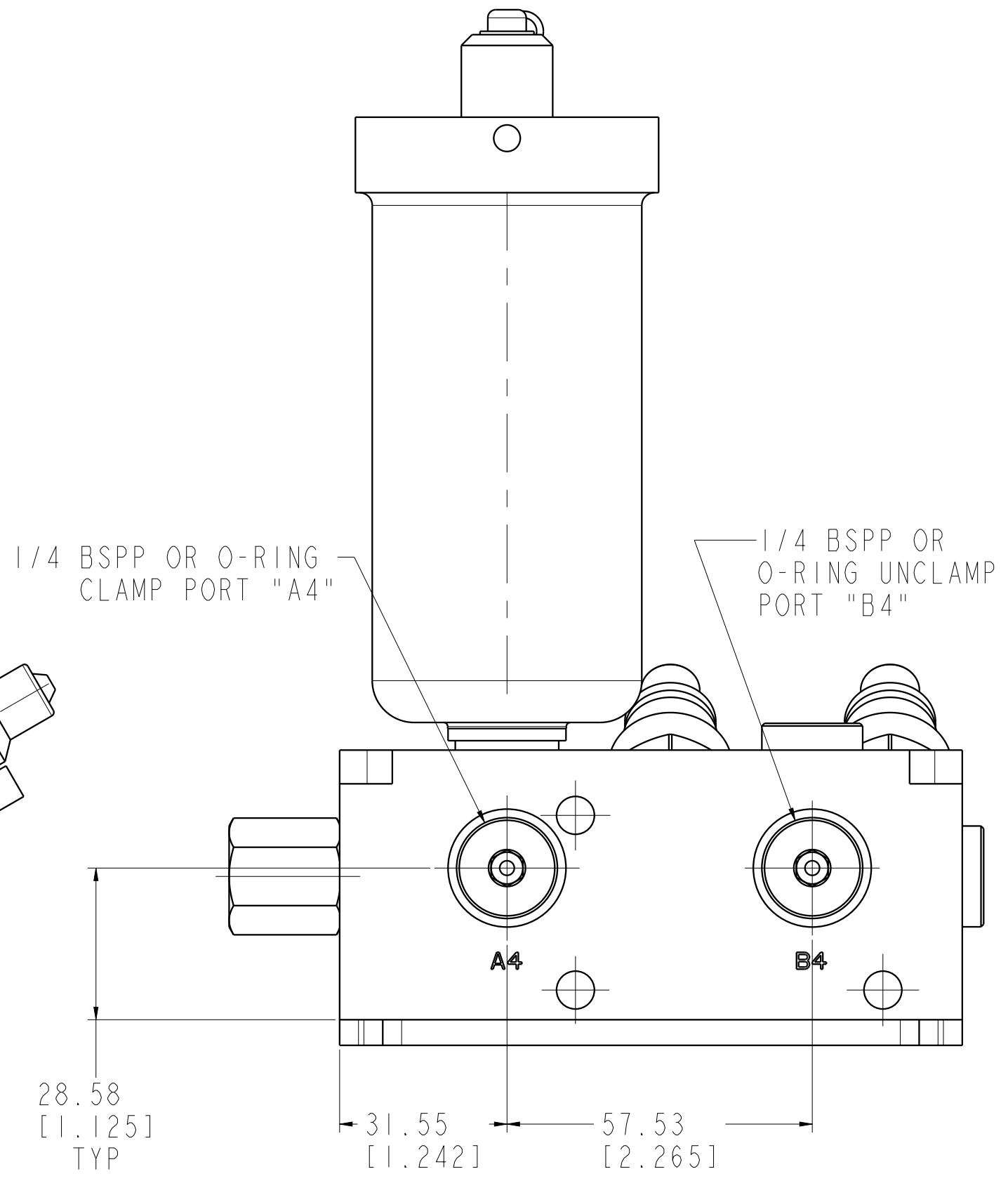
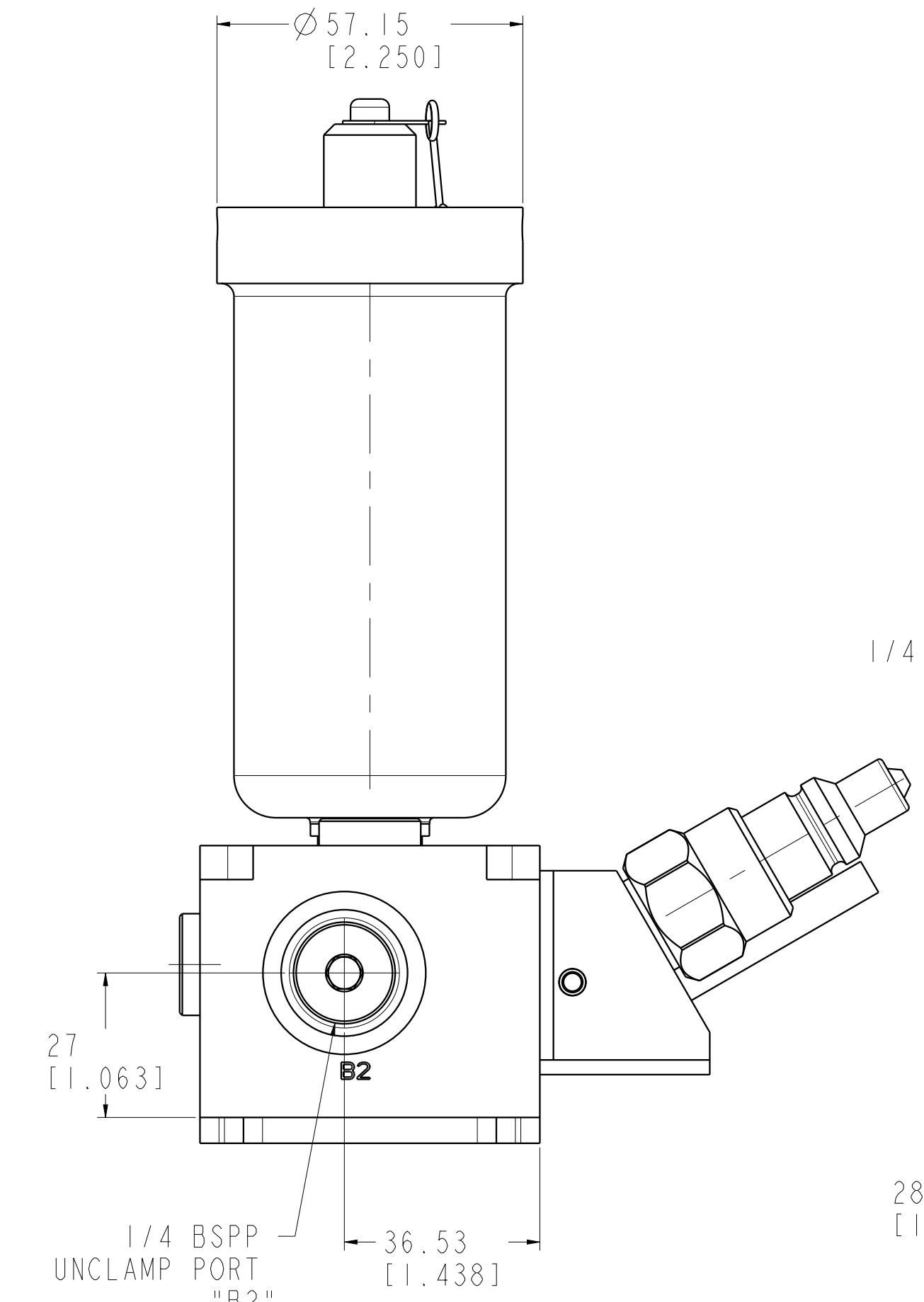
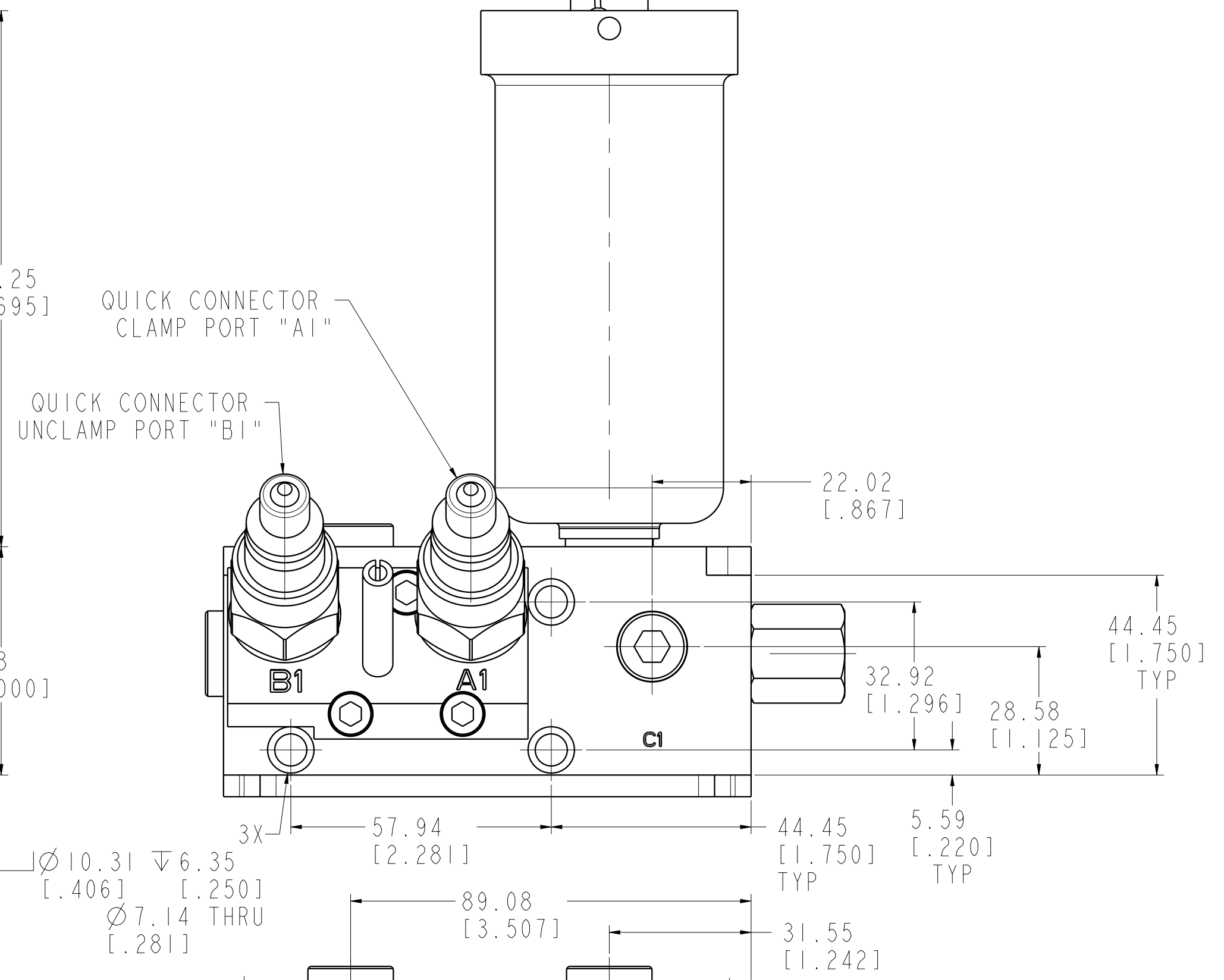
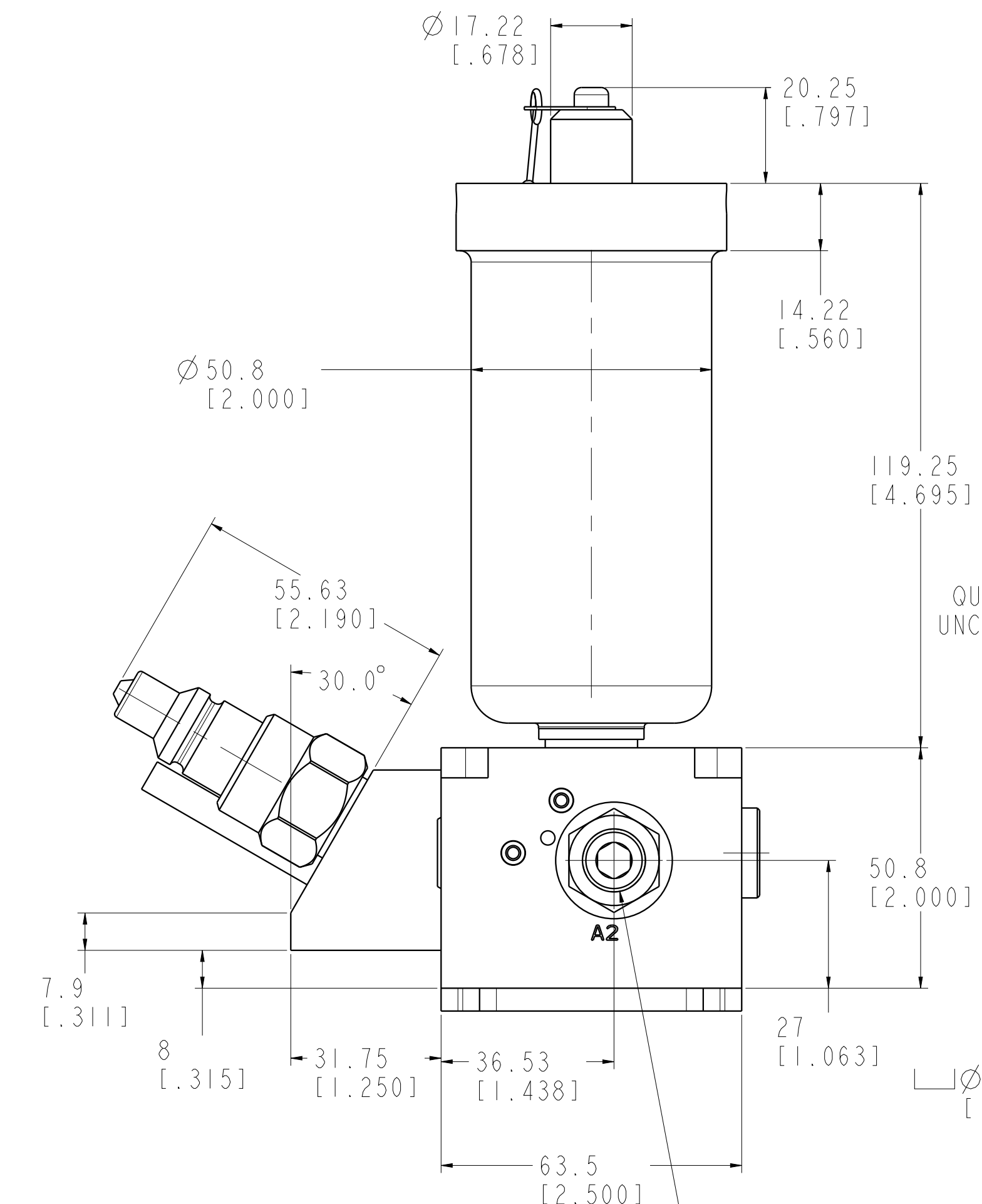
2

3

4



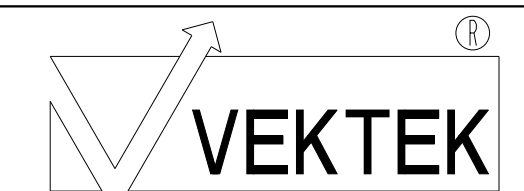
SCALE 0.500  
 ILCM45600726 REV A ECN3570



1/4 BSPP CLAMP PORT "A2" USE ADAPTER IN END PORT AS REQUIRED

1/4 BSPP UNCLAMP PORT "B3"

CAD CONTROL DRAWING



VEKTEK, INC.  
 1334 E. SIXTH AVE. P.O. BOX 625  
 EMPORIA, KS. 66801 U.S.A.

A	3570	RELEASE	DLG	8-29-18	45600726	A	ASSY, PD, 1H, DUAL, 35 MPA, EXT ACC
REV	IN ACCORDANCE WITH ECN	EFFECTIVE DATE	REVISED BY	DATE	REFERENCE MODEL	REF REV	*****
DRW BY:	DLG	DRAWING STATUS: Released			TOLERANCES DO NOT APPLY	UNITS	SIZE
DATE:	8/3/18	PRODUCTION APPROVED FOR RELEASED STATUS ONLY			DIMENSIONS ARE NOMINAL	mm (inch)	D
							ILCM45600726
							REV A