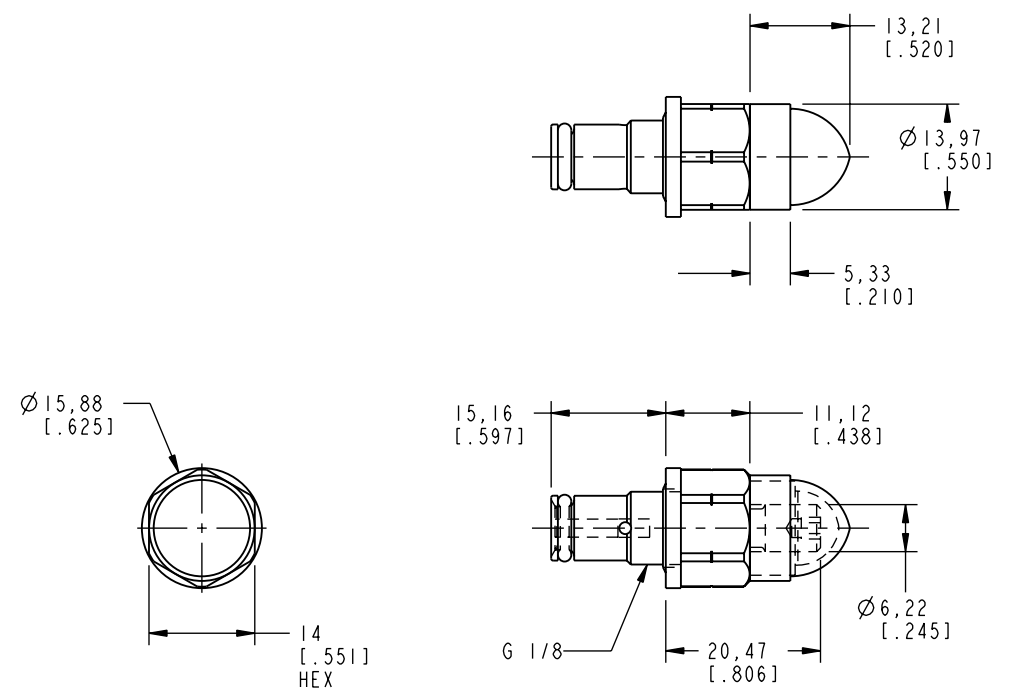


1 2 3 4

D
C
B
A

D
C
B
A



ILCM47020371 REV C ECN 2302

CAD CONTROL DRAWING

VEKTEK
 VEKTEK, INC.
 1334 E. SIXTH AVE. P.O. BOX 625
 EMPORIA, KS. 66801 U.S.A.

C	2302	RELEASE	K. ROEMER	08/01/11	47020371	D	FLOW CONTROL, G 1/8, 15.16
REV	IN ACCORDANCE WITH ECN	EFFECTIVE DATE	REVISED BY	DATE	REFERENCE MODEL	REF REV	*****
DRW BY:	GAV	DRAWING STATUS: Released			TOLERANCES DO NOT APPLY	UNITS	SIZE
DATE:	03/10/08	PRODUCTION APPROVED FOR RELEASED STATUS ONLY			DIMENSIONS ARE NOMINAL	mm [inch]	B
					ILCM47020371	REV	C

FORM FEG036, Rev. A

SHEET 1 OF 1