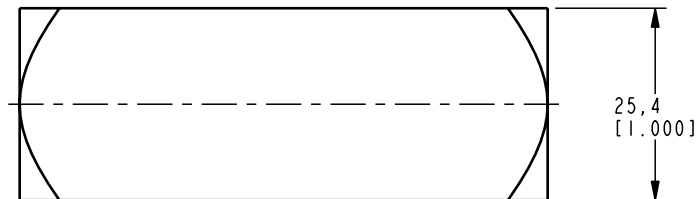


ILCM47034011 REV A ECN 1520



<b>CAD CONTROL DRAWING</b>			
		VEKTEK, INC. 1334 E. SIXTH AVE. P.O. BOX 625 EMPORIA, KS. 66801 U.S.A.	

A	1520	RELEASE	K. ROEMER	06-13-06	47034011	A	VALVE, CHECK, G 1/4	
REV	IN ACCORDANCE WITH ECN	EFFECTIVE DATE	REVISED BY	DATE	REFERENCE MODEL	REF REV	''''	
DRW BY:	K. ROEMER	<b>DRAWING STATUS: Released</b>			TOLERANCES DO NOT APPLY	UNITS	SIZE	
DATE:	06-13-06	PRODUCTION APPROVED FOR RELEASED STATUS ONLY			DIMENSIONS ARE NOMINAL	mm [inch]	B	
							ILCM47034011	REV A

FORM FEG036, Rev. A