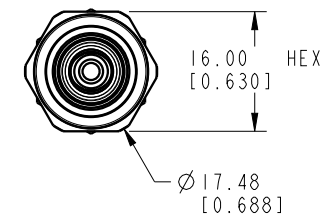
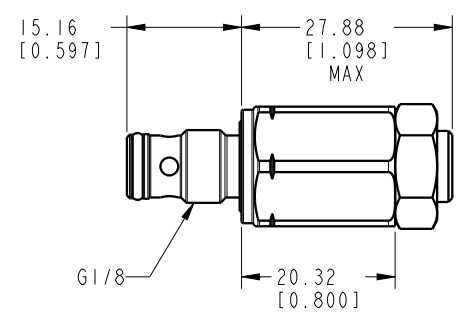
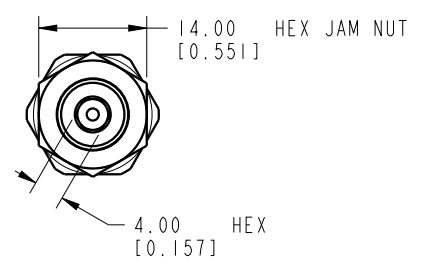


ILCM47044332 REV B ECN 4606



CAD CONTROL DRAWING			
		VEKTEK, INC. 1334 E. SIXTH AVE. P.O. BOX 625 EMPORIA, KS. 66801 U.S.A.	

B	4606	RELEASE	NPETERS	8/18/25	47044332	D	ASSY, IP-SEQ, G1/8, 15.16, 200BAR	
REV	IN ACCORDANCE WITH ECN	EFFECTIVE DATE	REVISED BY	DATE	REFERENCE MODEL	REF REV	*****	
DRW BY:	ATHOMSEN	DRAWING STATUS: Released			TOLERANCES DO NOT APPLY	UNITS	SIZE	
DATE:	22-AUG-2018	PRODUCTION APPROVED FOR RELEASED STATUS ONLY			DIMENSIONS ARE NOMINAL	mm [inch]	B	
							ILCM47044332	REV B

FORM FEG036, Rev. C