

1

2

3

4

D

D

C

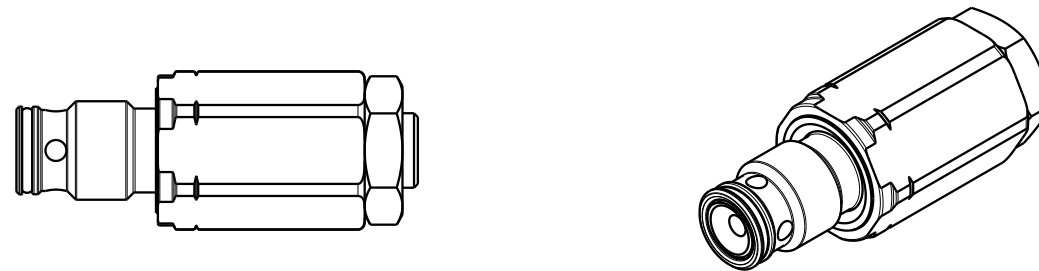
C

B

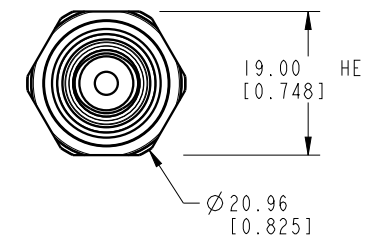
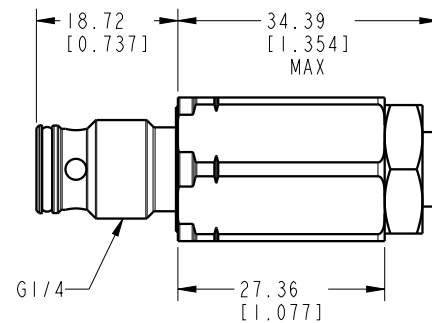
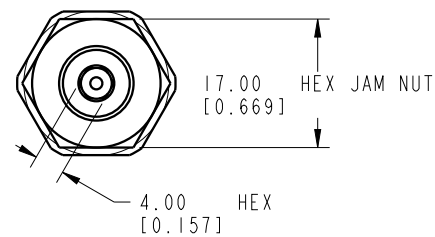
B

A

A



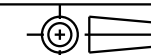
ILCM47044350 REV A ECN 3559



CAD CONTROL DRAWING



VEKTEK, INC.  
 1334 E. SIXTH AVE. P.O. BOX 625  
 EMPORIA, KS. 66801 U.S.A.



A	3559	RELEASE	ATHOMSEN	22-AUG-2018	47044350	A	ASSY, IP-SEQ, G1/8, 18.72, 50BAR
REV	IN ACCORDANCE WITH ECN	EFFECTIVE DATE	REVISED BY	DATE	REFERENCE MODEL	REF REV	*****
DRW BY:	ATHOMSEN	DRAWING STATUS: <b>Released</b>			TOLERANCES DO NOT APPLY	UNITS	SIZE
DATE:	22-AUG-2018	PRODUCTION APPROVED FOR RELEASED STATUS ONLY			DIMENSIONS ARE NOMINAL	mm [inch]	B
					ILCM47044350		REV A

FORM FEG036, Rev. C

SHEET 1 OF 1