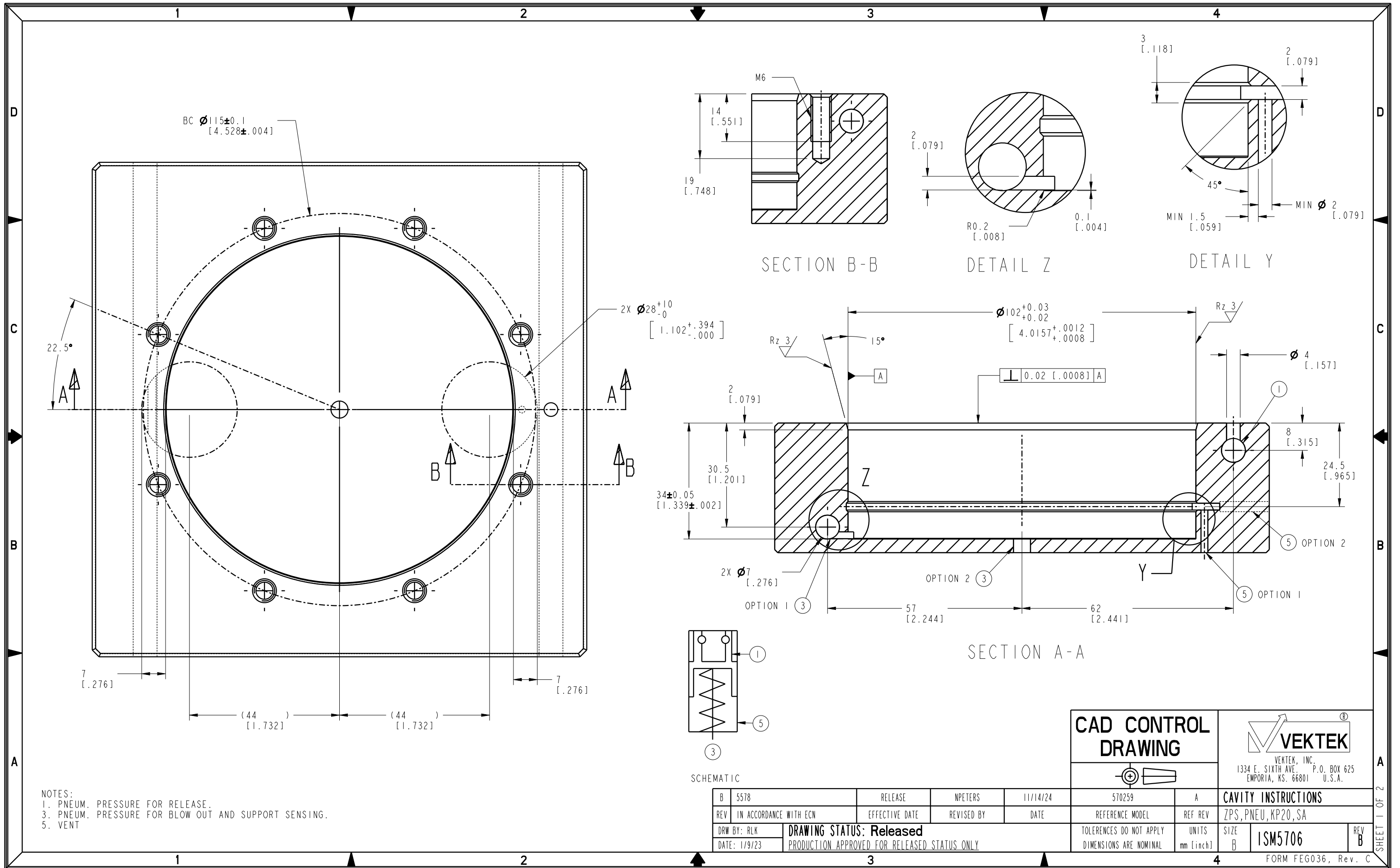


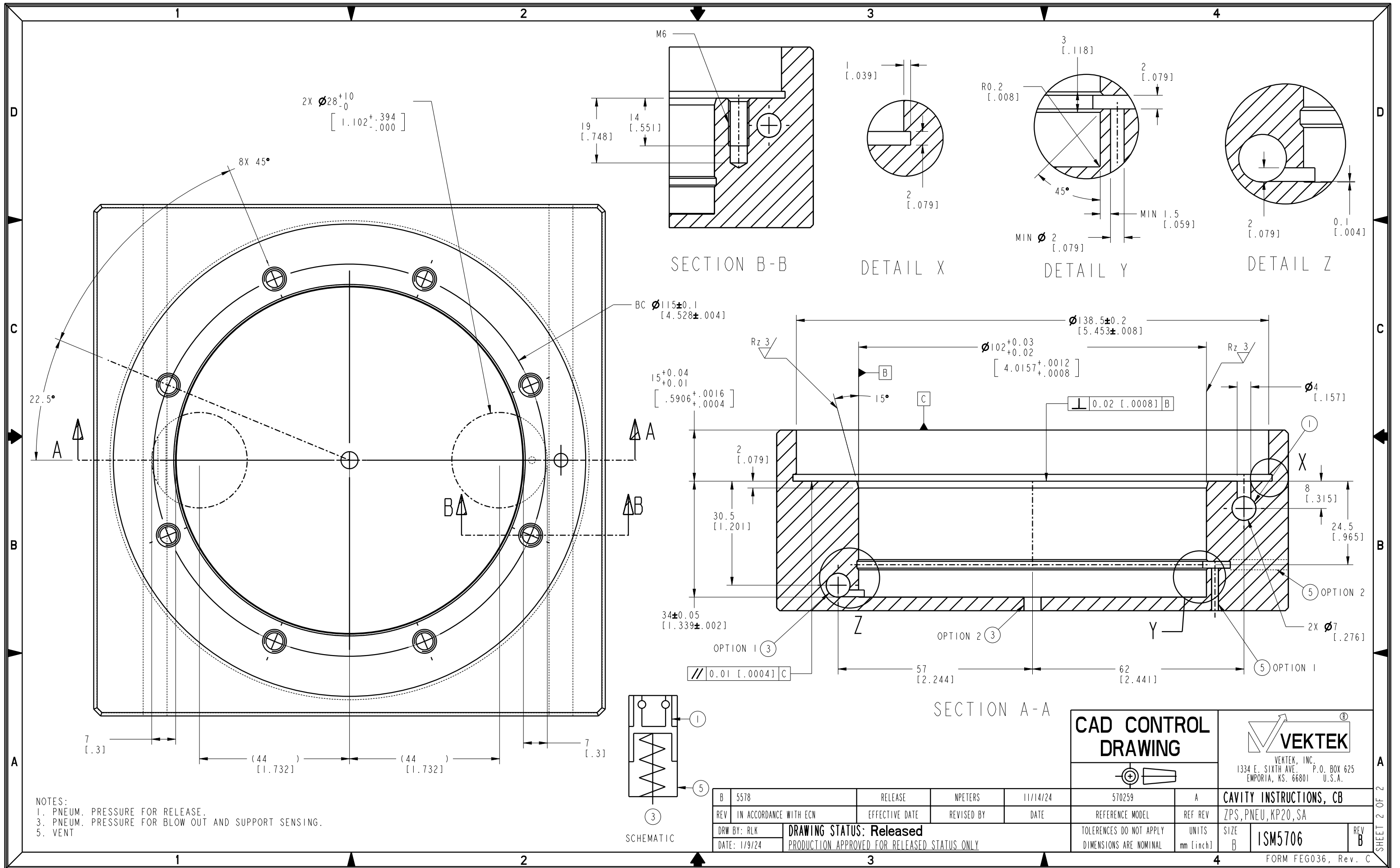
ILCM570259 REV B ECN 5304

NOTES:
 1. WEIGHT: 2600G (5.73LB)
 2. ATTACH ISM5706

CAD CONTROL DRAWING			
		VEKTEK, INC. 1334 E. SIXTH AVE. P.O. BOX 625 EMPORIA, KS. 66801 U.S.A.	

B	5304	RELEASE	RLK	5/13/24	570259	A	ZPS, PNEUMATIC, KP20, SA
REV	IN ACCORDANCE WITH ECN	EFFECTIVE DATE	REVISED BY	DATE	REFERENCE MODEL	REF REV	*****
DRW BY:	RLK	DRAWING STATUS: Released			TOLERANCES DO NOT APPLY	UNITS	SIZE
DATE:	1/31/24	PRODUCTION APPROVED FOR RELEASED STATUS ONLY			DIMENSIONS ARE NOMINAL	mm [inch]	B
							ILCM570259
							FORM FEG036, Rev. C





NOTES:
 1. PNEUM. PRESSURE FOR RELEASE.
 3. PNEUM. PRESSURE FOR BLOW OUT AND SUPPORT SENSING.
 5. VENT

CAD CONTROL DRAWING

VEKTEK
 VEKTEK, INC.
 1334 E. SIXTH AVE. P.O. BOX 625
 EMPORIA, KS. 66801 U.S.A.

B	5578	RELEASE	NPETERS	11/14/24	570259	A	CAVITY INSTRUCTIONS, CB
REV	IN ACCORDANCE WITH ECN	EFFECTIVE DATE	REVISED BY	DATE	REFERENCE MODEL	REF REV	ZPS,PNEU,KP20,SA
DRW BY:	RLK	DRAWING STATUS: Released			TOLERANCES DO NOT APPLY	UNITS	SIZE
DATE:	1/9/24	PRODUCTION APPROVED FOR RELEASED STATUS ONLY			DIMENSIONS ARE NOMINAL	mm [inch]	B
							ISM5706
							REV B