

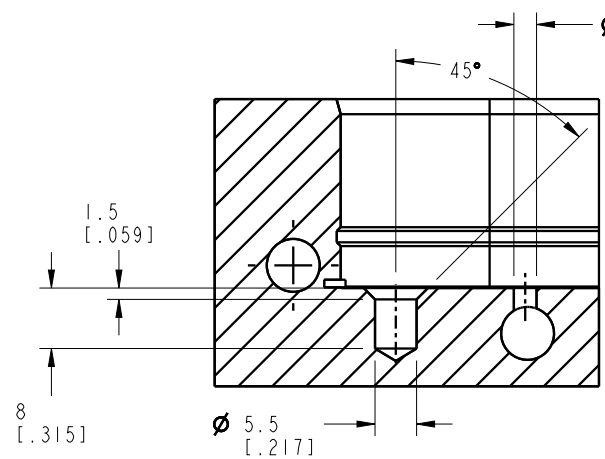


NOTES:  
 1. WEIGHT: 1400G(3.09LB)  
 2. ATTACH ISM5708

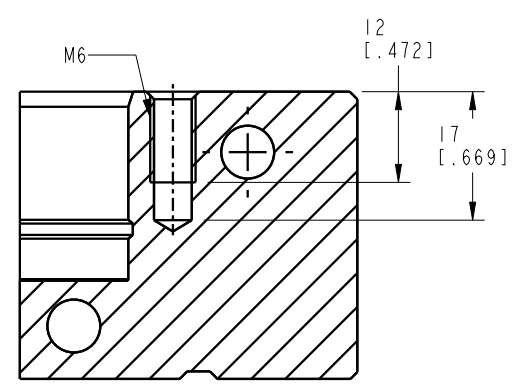
<b>CAD CONTROL DRAWING</b>		 VEKTEK, INC. 1334 E. SIXTH AVE. P.O. BOX 625 EMPORIA, KS. 66801 U.S.A.	
			

A	5241	RELEASE	RLK	1/31/24	570261	A	ZPS, PNEUMATIC, KP10, SA, SENSING	
REV	IN ACCORDANCE WITH ECN	EFFECTIVE DATE	REVISED BY	DATE	REFERENCE MODEL	REF REV	*****	
DRW BY:	RLK	<b>DRAWING STATUS: Released</b>			TOLERANCES DO NOT APPLY	UNITS	SIZE	
DATE:	1/31/24	PRODUCTION APPROVED FOR RELEASED STATUS ONLY			DIMENSIONS ARE NOMINAL	mm [inch]	B	
							ILCM570261	REV A

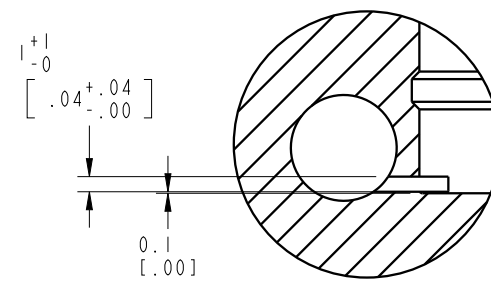
FORM FEG036, Rev. C



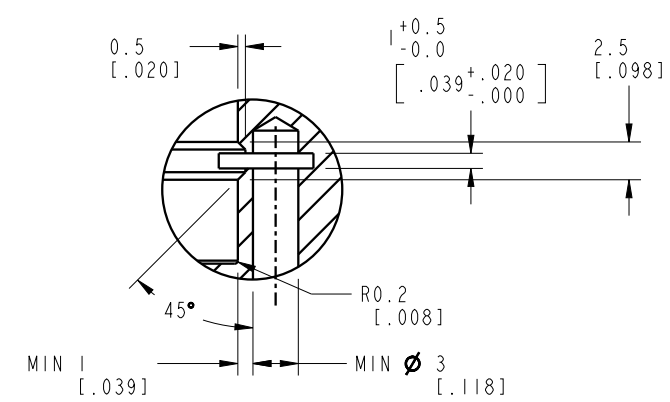
SECTION C-C



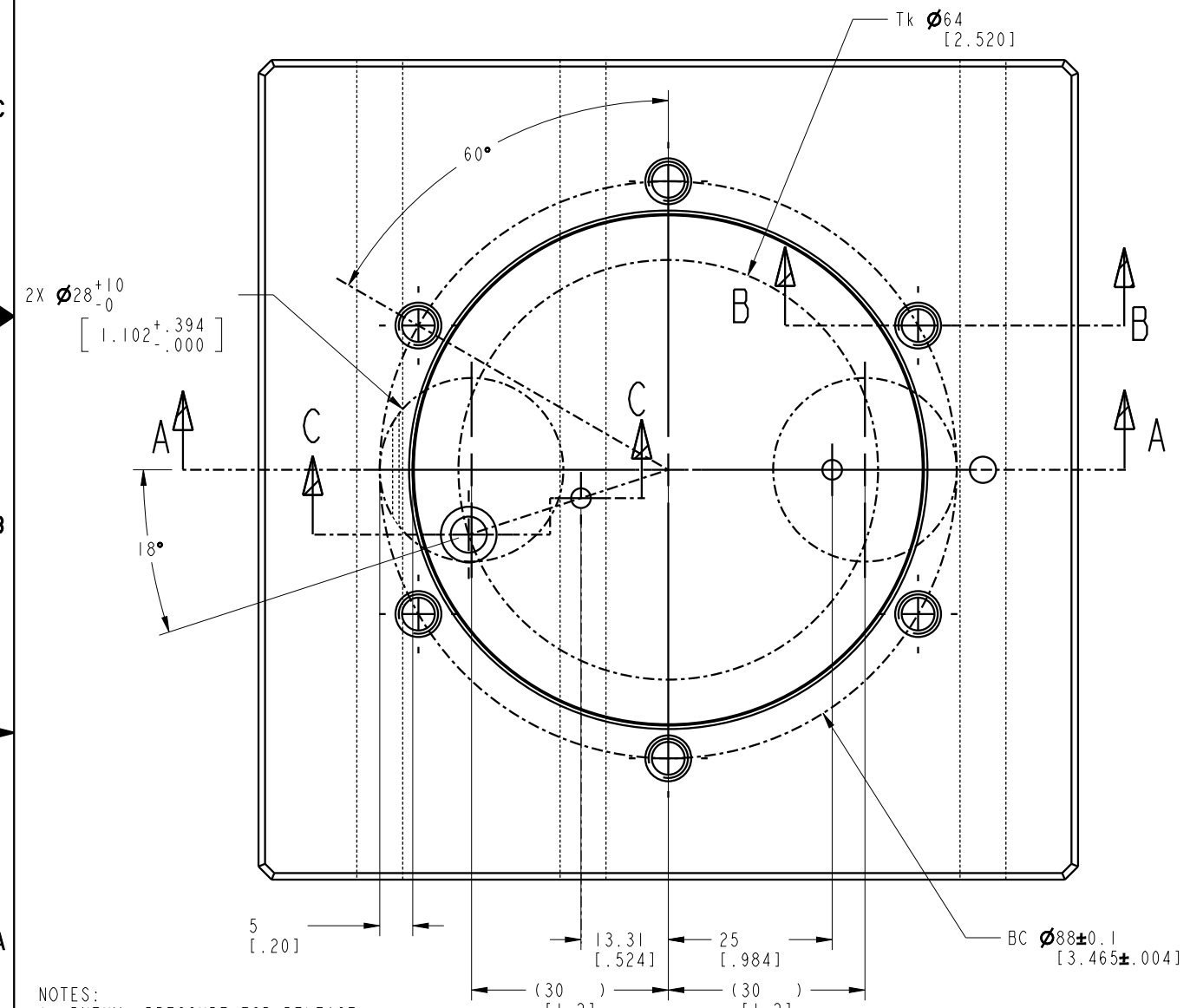
SECTION B-B



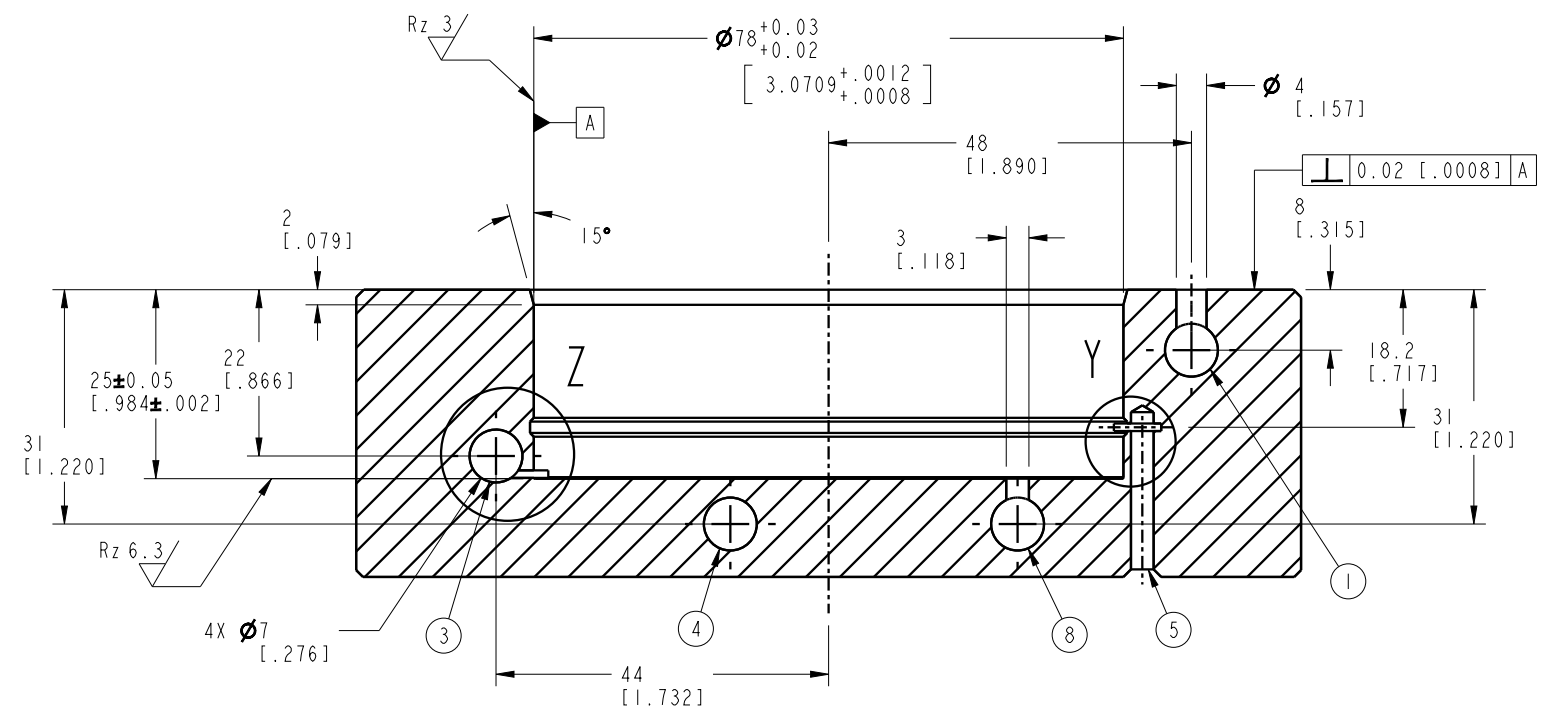
DETAIL Z



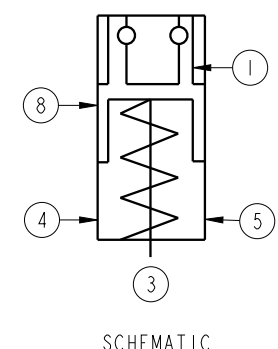
DETAIL Y



- NOTES:  
 1. PNEUM. PRESSURE FOR RELEASE.  
 3. PNEUM. PRESSURE FOR BLOW OUT AND SUPPORT SENSING.  
 4. PNEUM. PRESSURE FOR OPEN SENSING.  
 5. VENT  
 8. PNEUM. PRESSURE LOCKING SENSING.



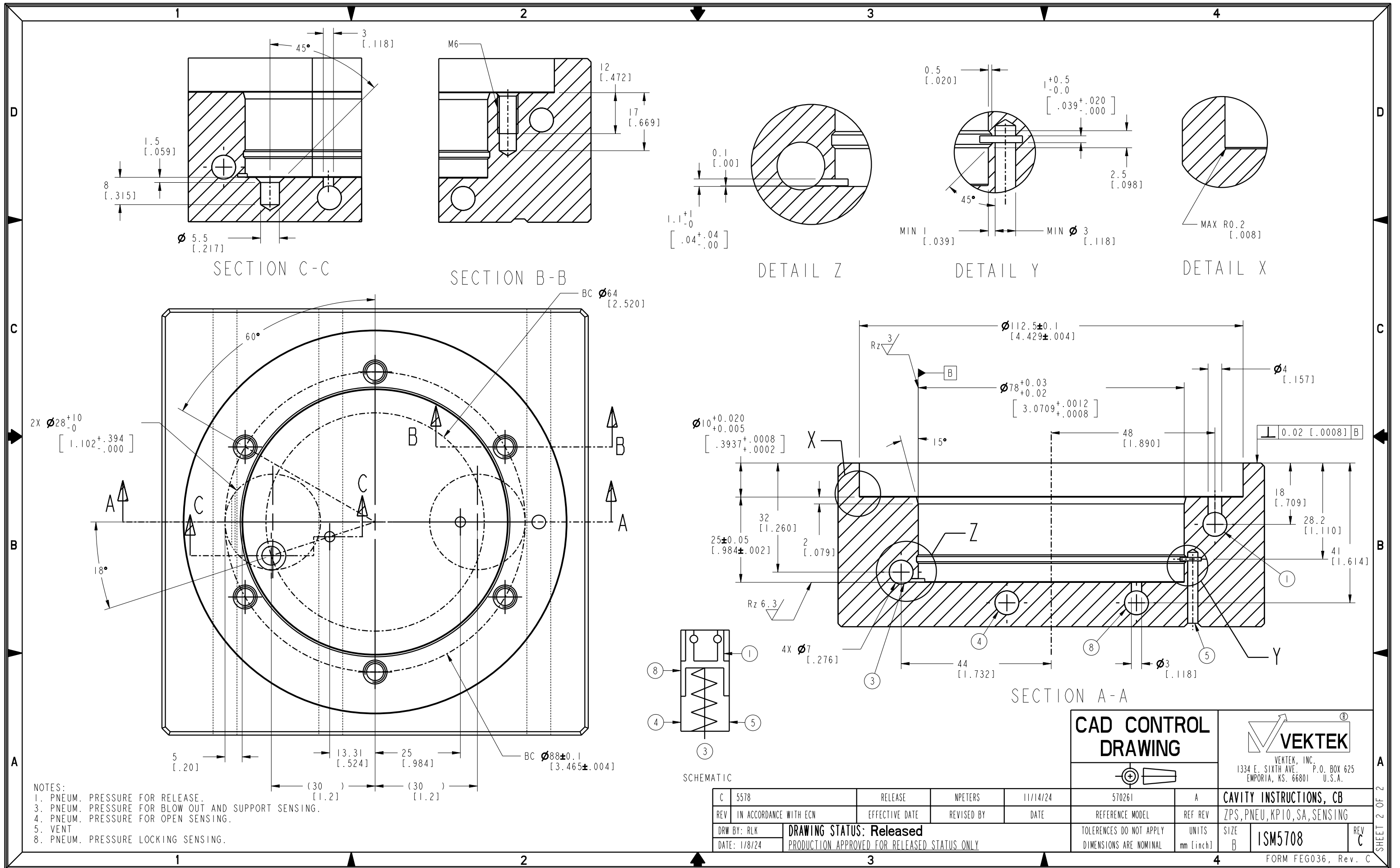
SECTION A-A



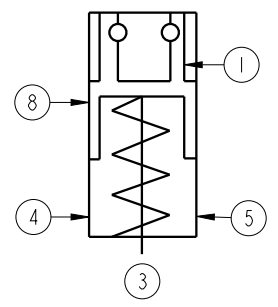
SCHEMATIC

<b>CAD CONTROL DRAWING</b>		<b>VEKTEK</b> VEKTEK, INC. 1334 E. SIXTH AVE. P.O. BOX 625 EMPORIA, KS. 66801 U.S.A.	
C 5578	RELEASE	NPETERS	11/14/24
REV IN ACCORDANCE WITH ECN	EFFECTIVE DATE	REVISED BY	DATE
DRW BY: RLK	<b>DRAWING STATUS: Released</b>		570261
DATE: 1/8/24	PRODUCTION APPROVED FOR RELEASED STATUS ONLY		A
TOLERANCES DO NOT APPLY DIMENSIONS ARE NOMINAL		UNITS mm [inch]	SIZE B
CAVITY INSTRUCTIONS ZPS,PNEU,KP10,SA,SENSING		FORM FEG036, Rev. C	REV C

SHEET 1 OF 2



- NOTES:  
 1. PNEUM. PRESSURE FOR RELEASE.  
 2. PNEUM. PRESSURE FOR BLOW OUT AND SUPPORT SENSING.  
 3. PNEUM. PRESSURE FOR BLOW OUT AND SUPPORT SENSING.  
 4. PNEUM. PRESSURE FOR OPEN SENSING.  
 5. VENT  
 8. PNEUM. PRESSURE LOCKING SENSING.



SCHEMATIC

C	5578	RELEASE	NPETERS	11/14/24	570261	A	CAVITY INSTRUCTIONS, CB
REV	IN ACCORDANCE WITH ECN	EFFECTIVE DATE	REVISED BY	DATE	REFERENCE MODEL	REF REV	ZPS, PNEU, KP10, SA, SENSING
DRW BY:	RLK	DRAWING STATUS: Released		TOLERANCES DO NOT APPLY	UNITS	SIZE	ISM5708
DATE:	1/8/24	PRODUCTION APPROVED FOR RELEASED STATUS ONLY		DIMENSIONS ARE NOMINAL	mm [inch]	B	REV C

**CAD CONTROL DRAWING**

VEKTEK, INC.  
 1334 E. SIXTH AVE. P.O. BOX 625  
 EMPORIA, KS. 66801 U.S.A.

SHEET 2 OF 2