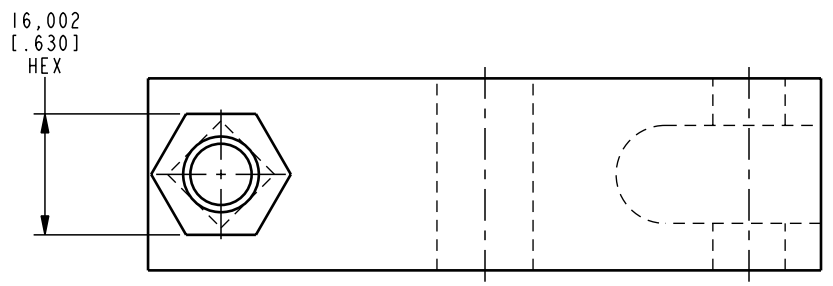
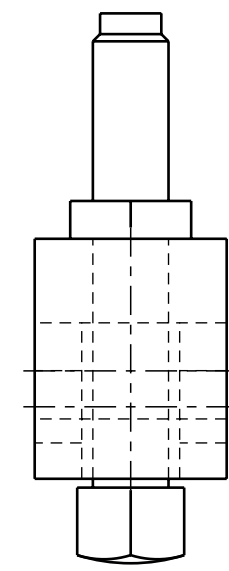
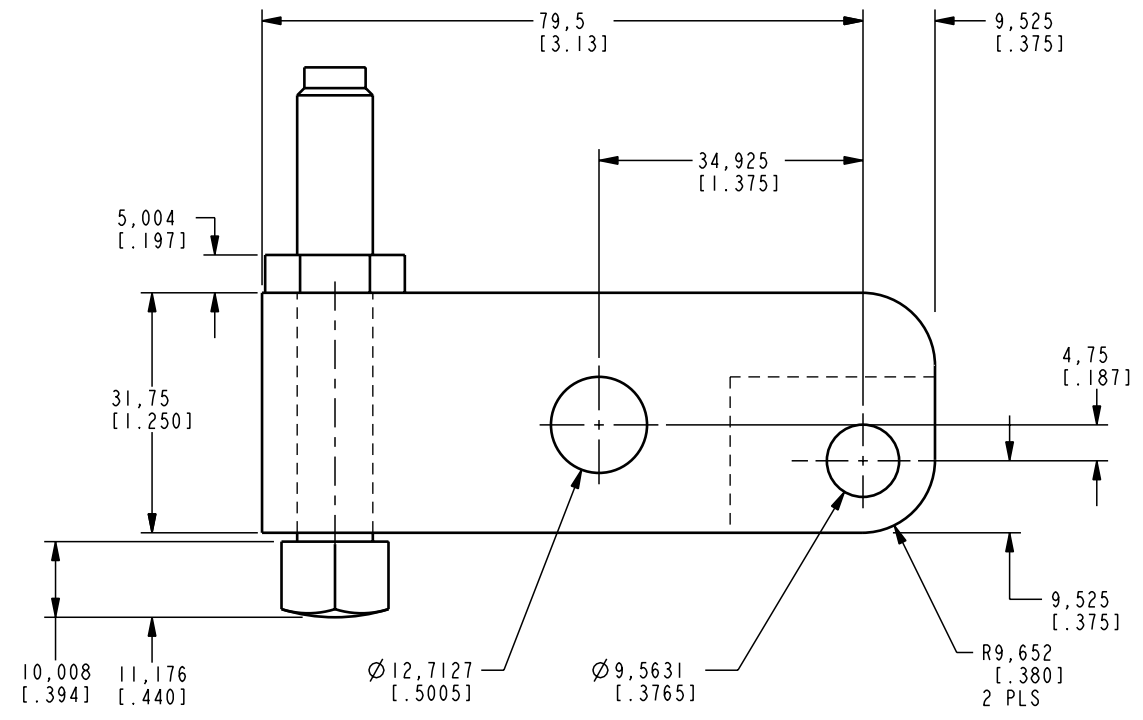
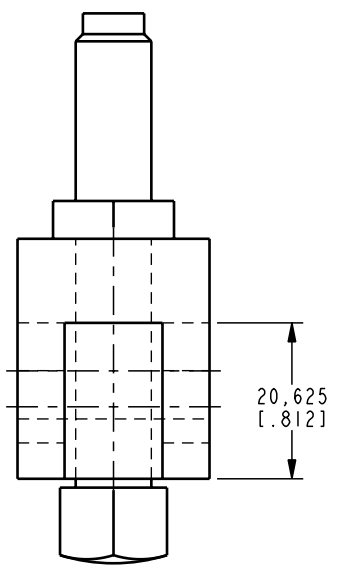


ILCM91600903 REV B ECN 1433



CAD CONTROL DRAWING			
		VEKTEK, INC. 1334 E. SIXTH AVE. P.O. BOX 625 EMPORIA, KS. 66801 U.S.A.	
B 1433	RELEASE	K. ROEMER	02-15-06
REV IN ACCORDANCE WITH ECN	EFFECTIVE DATE	REVISED BY	DATE
DRW BY: K. ROEMER	DRAWING STATUS: Released		91600903
DATE: 10-17-05	PRODUCTION APPROVED FOR RELEASED STATUS ONLY		A
TOLERANCES DO NOT APPLY DIMENSIONS ARE NOMINAL		UNITS mm [inch]	SIZE B
		LEVER, LC, 11 KN	ILCM91600903
		FORM FEG036, Rev. A	REV B