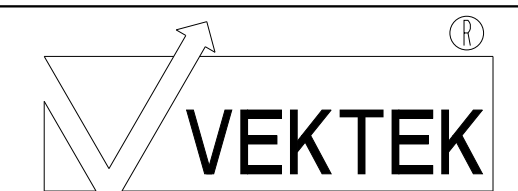
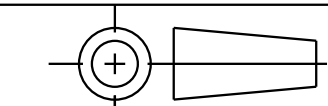


I L C M V 4 1 0 7 0 8 1 0 R E V C E C N 4 2 4 4

CAD CONTROL
DRAWING



VEKTEK, INC.
1334 E. SIXTH AVE. P.O. BOX 625
EMPORIA, KS. 66801 U.S.A.



C	4244	RELEASE	NPETERS	7/28/20	41070810	D	WS, FA, CM, HC, 17.8kN
REV	IN ACCORDANCE WITH ECN	EFFECTIVE DATE	REVISED BY	DATE	REFERENCE MODEL	REF REV	
DRW BY:	ALS	DRAWING STATUS: Released			TOLERANCES DO NOT APPLY	UNITS	SIZE
DATE:	05/31/19	PRODUCTION APPROVED FOR RELEASED STATUS ONLY			DIMENSIONS ARE NOMINAL	mm (inch)	D
					I L C M V 4 1 0 7 0 8 1 0	REV	C