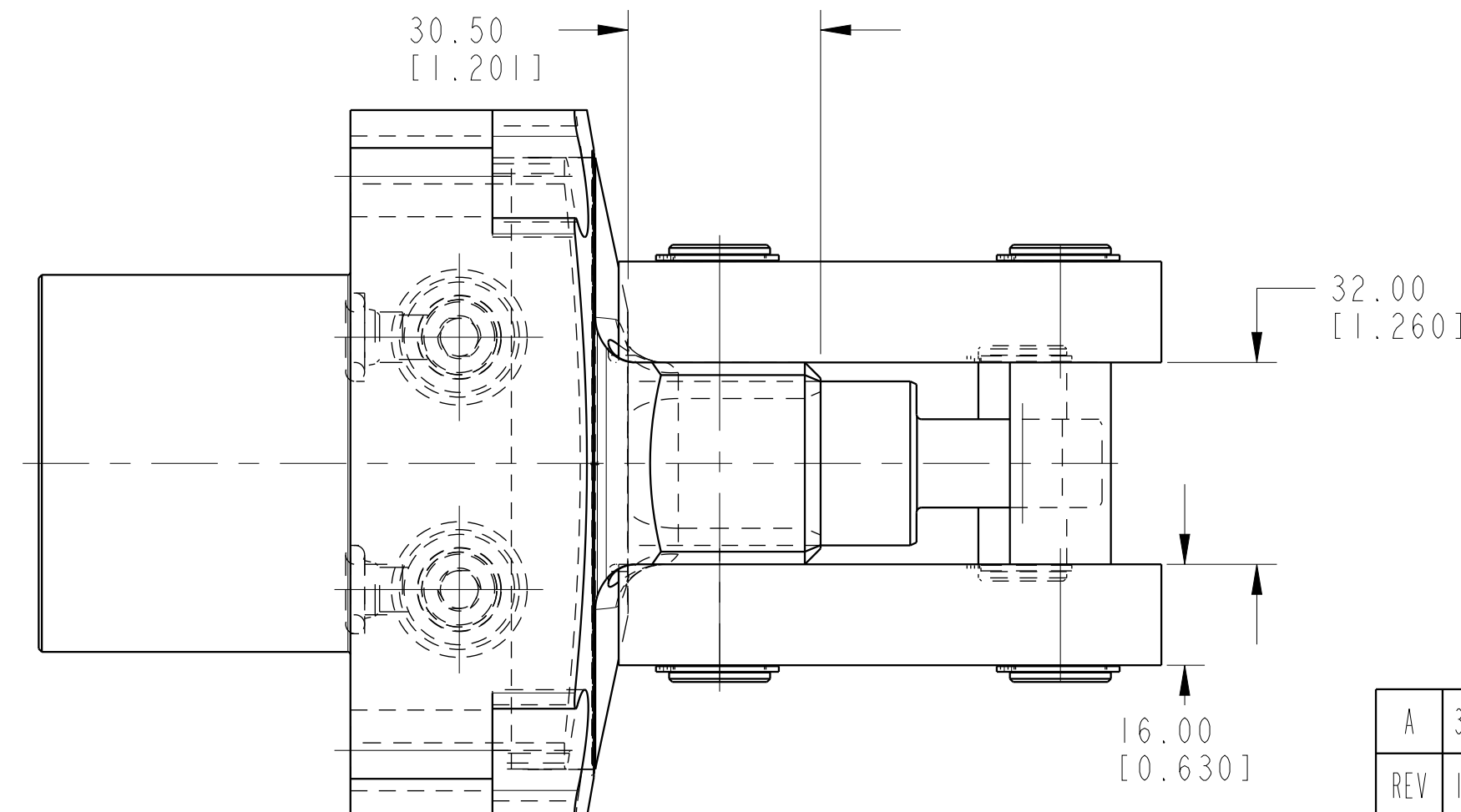
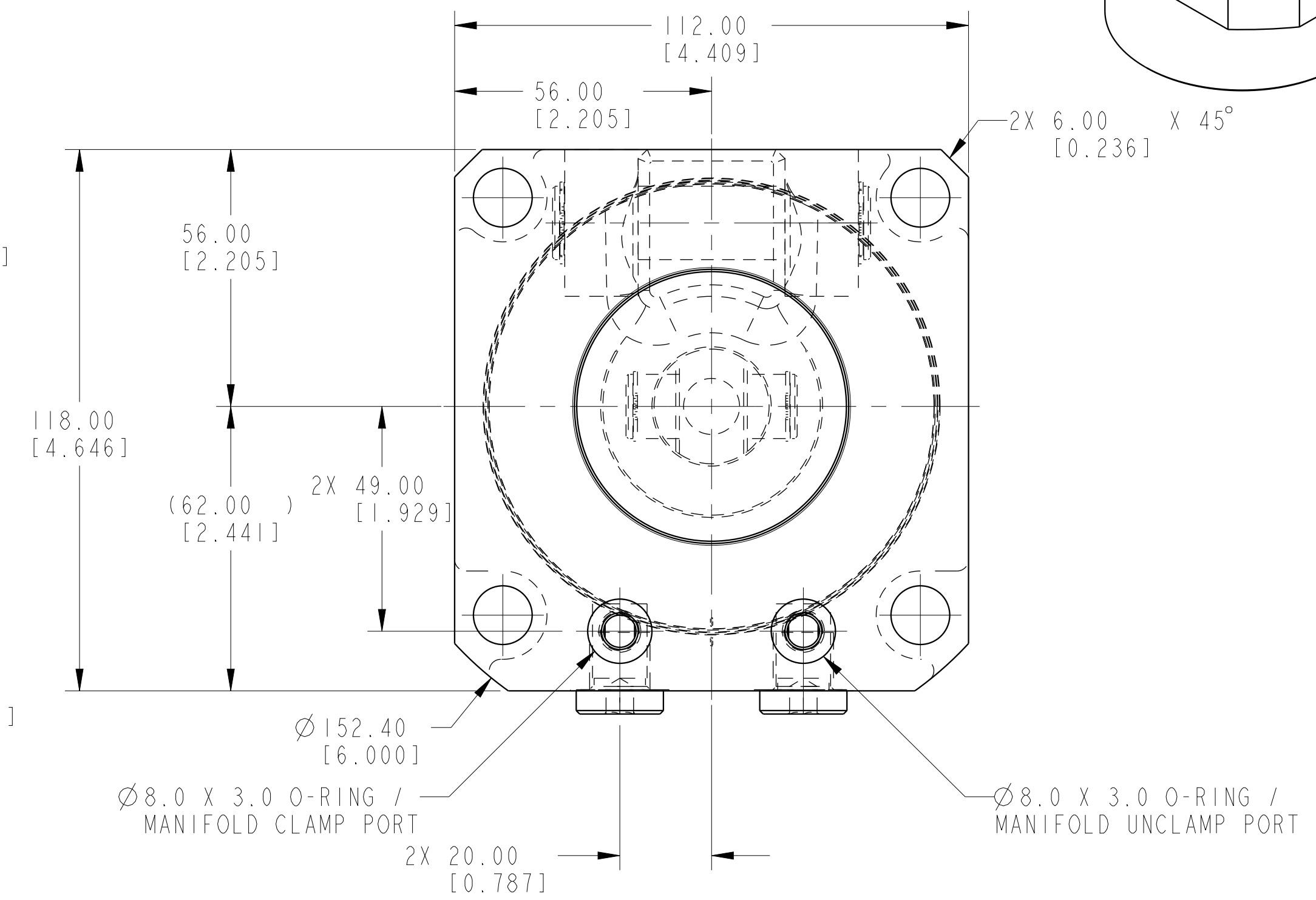
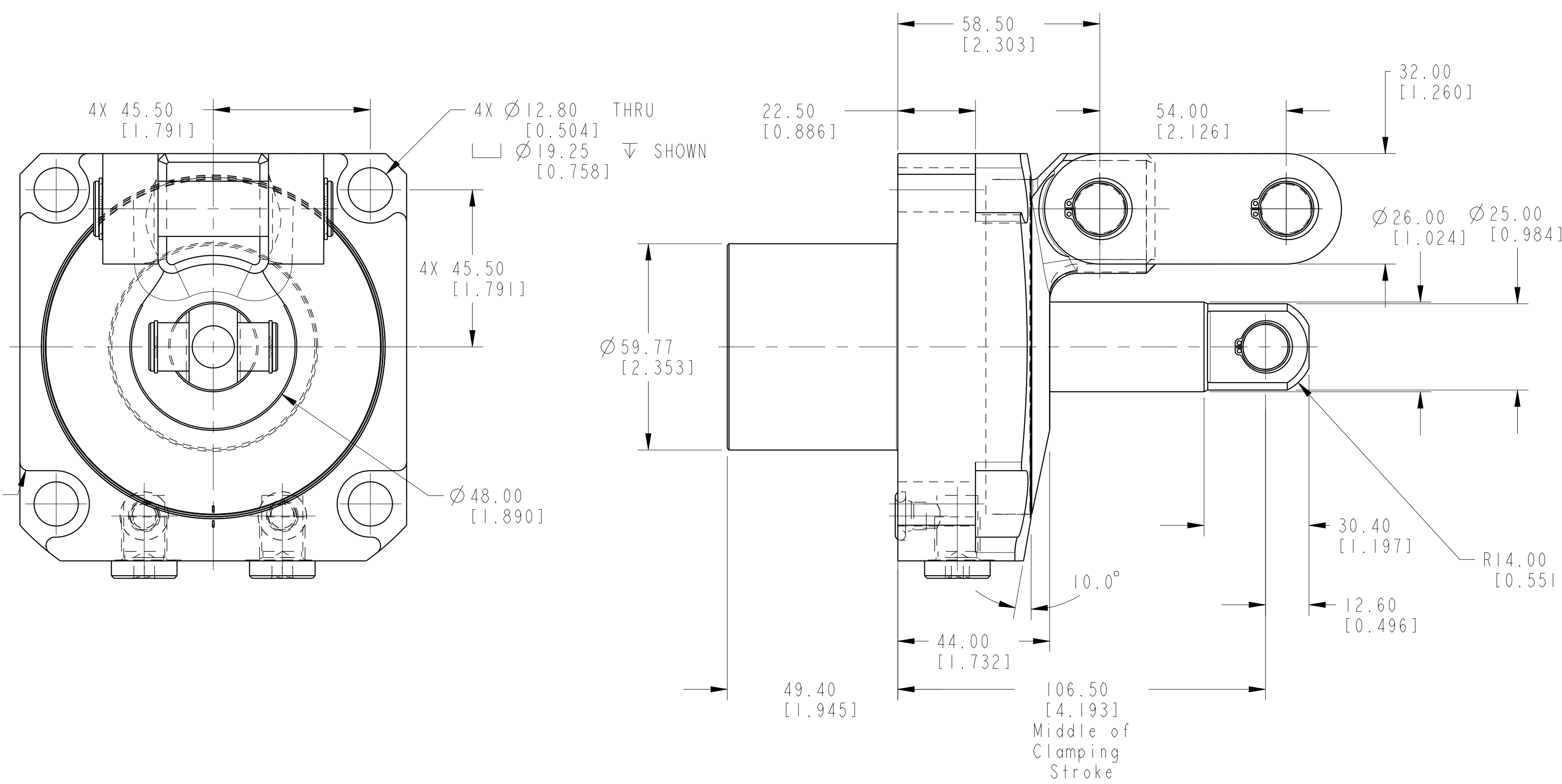
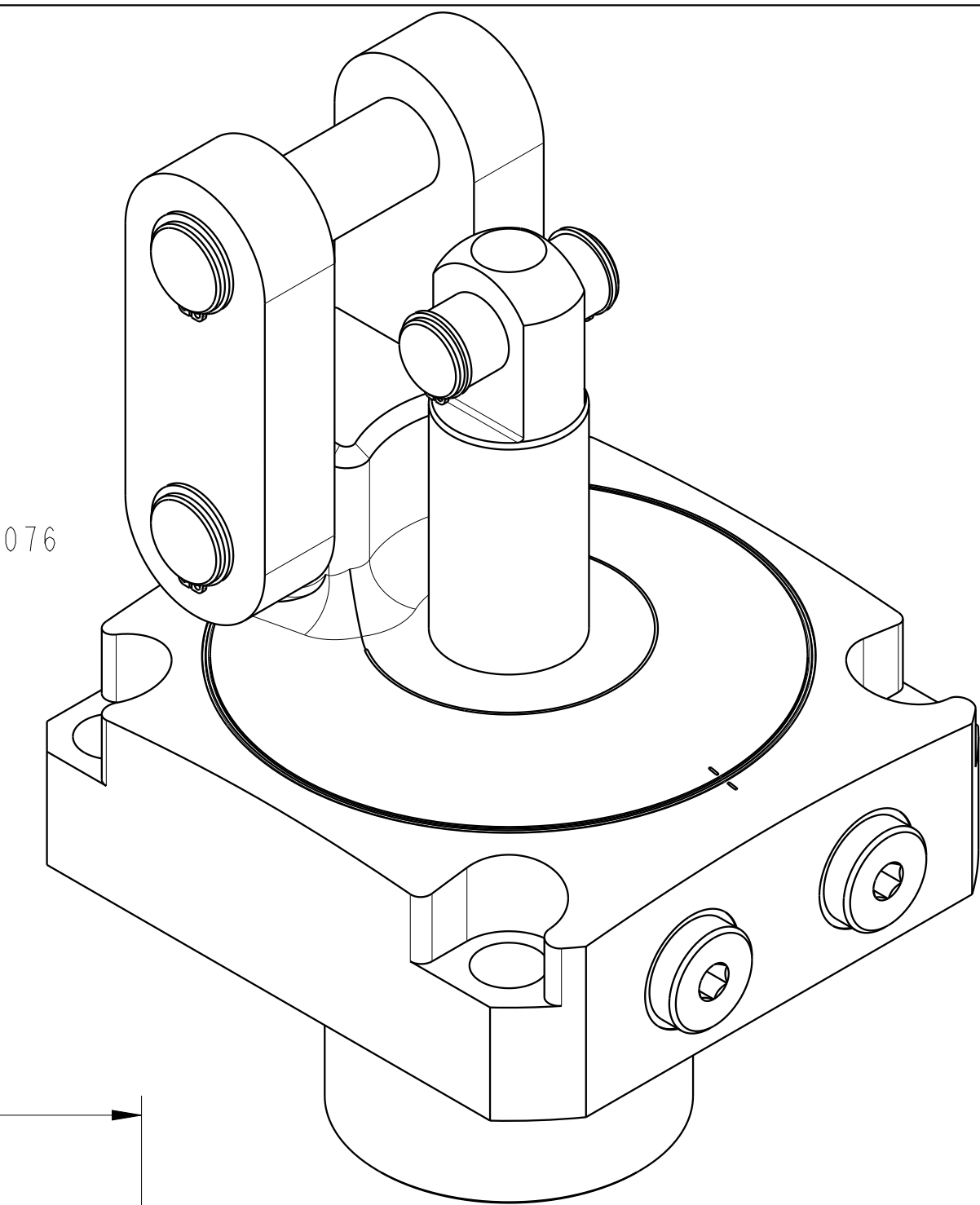
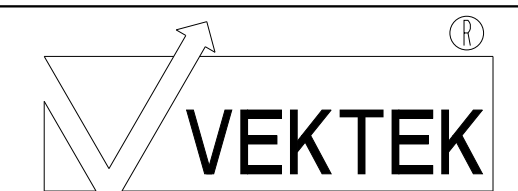


ILCMV41623200 REV A ECN 3076



CAD CONTROL DRAWING



VEKTEK, INC.  
1334 E. SIXTH AVE. P.O. BOX 625  
EMPORIA, KS. 66801 U.S.A.

|         |                        |  |            |          |                         |           |                       |
|---------|------------------------|--|------------|----------|-------------------------|-----------|-----------------------|
| A       | 3076                   | RELEASE                                      | BCD        | 08-22-16 | 41623200                | A         | LC, TL360, DA, 22.3kN |
| REV     | IN ACCORDANCE WITH ECN | EFFECTIVE DATE                               | REVISED BY | DATE     | REFERENCE MODEL         | REF REV   |                       |
| DRW BY: | BCD                    | DRAWING STATUS: Released                     |            |          | TOLERANCES DO NOT APPLY | UNITS     | SIZE                  |
| DATE:   | 8-25-16                | PRODUCTION APPROVED FOR RELEASED STATUS ONLY |            |          | DIMENSIONS ARE NOMINAL  | mm (inch) | D                     |
|         |                        |  |            |          |                         |           | ILCMV41623200         |
|         |                        |  |            |          |                         |           | FORM FEG036, Rev. C   |