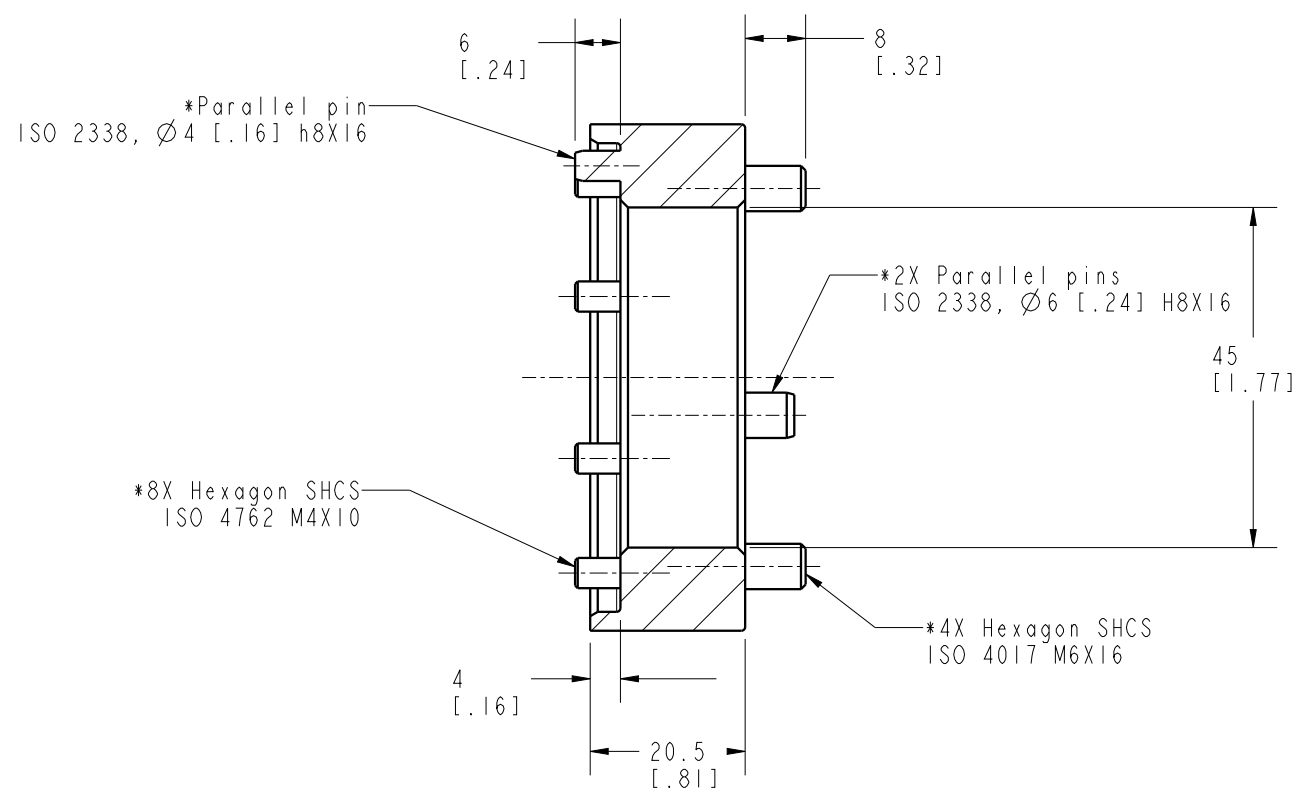
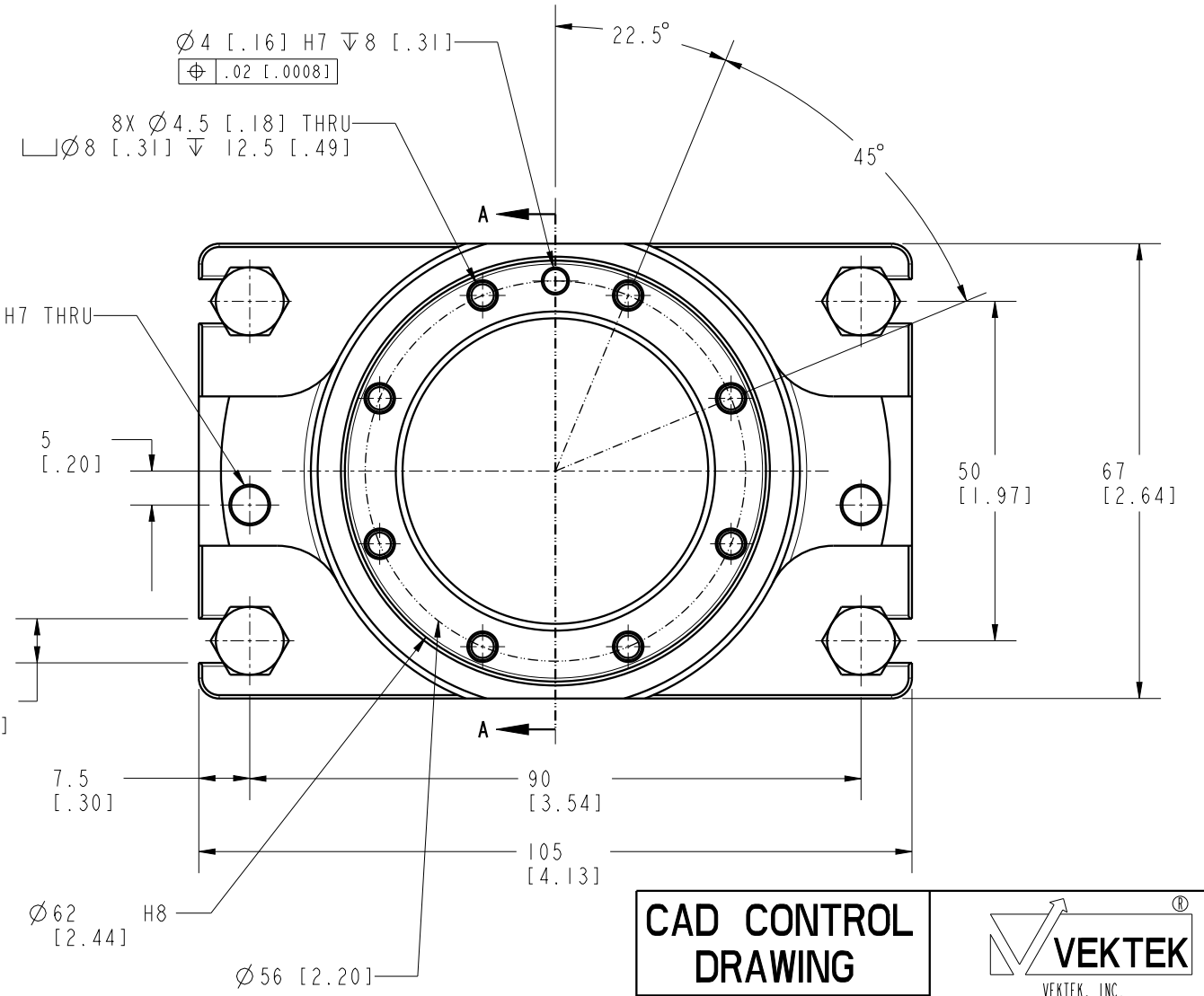


I L C M V A P 6 1 0 2 5 0 1 4 R E V A E C N 5 7 5 2



SECTION A-A



NOTES:
1. *Items are included

CAD CONTROL DRAWING			
		VEKTEK, INC. 1334 E. SIXTH AVE. P.O. BOX 625 EMPORIA, KS. 66801 U.S.A.	

A	5752	RELEASE	ALS	10/22/25	VAP61025014	A	IMPAOT, RC, P090, 56	
REV	IN ACCORDANCE WITH ECN	EFFECTIVE DATE	REVISED BY	DATE	REFERENCE MODEL	REF REV		
DRW BY:	ALS	DRAWING STATUS: Released			TOLERANCES DO NOT APPLY	UNITS	SIZE	
DATE:	7/2/25	PRODUCTION APPROVED FOR RELEASED STATUS ONLY			DIMENSIONS ARE NOMINAL	mm [inch]	B	
							I L C M V A P 6 1 0 2 5 0 1 4	REV A

FORM FEG036, Rev. C