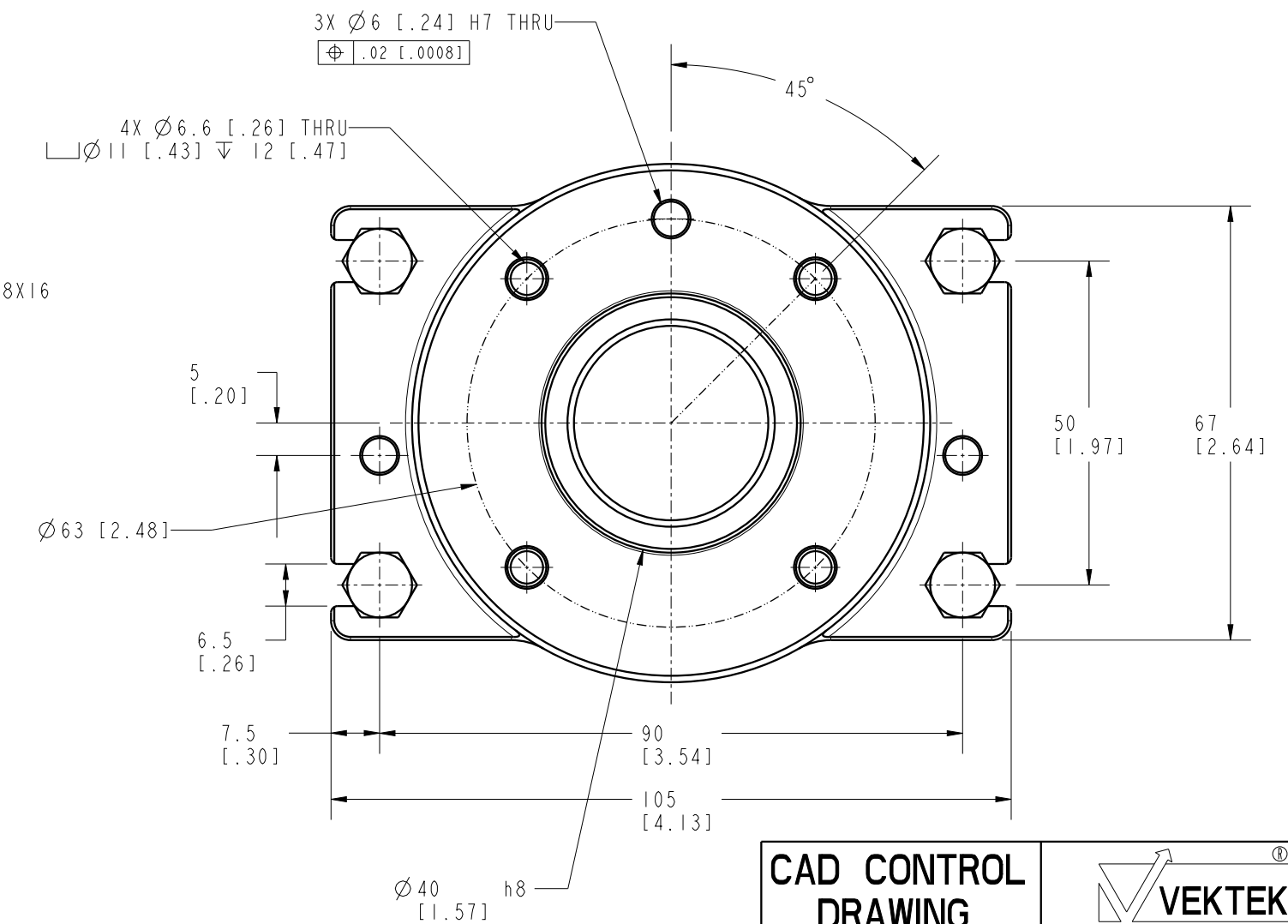
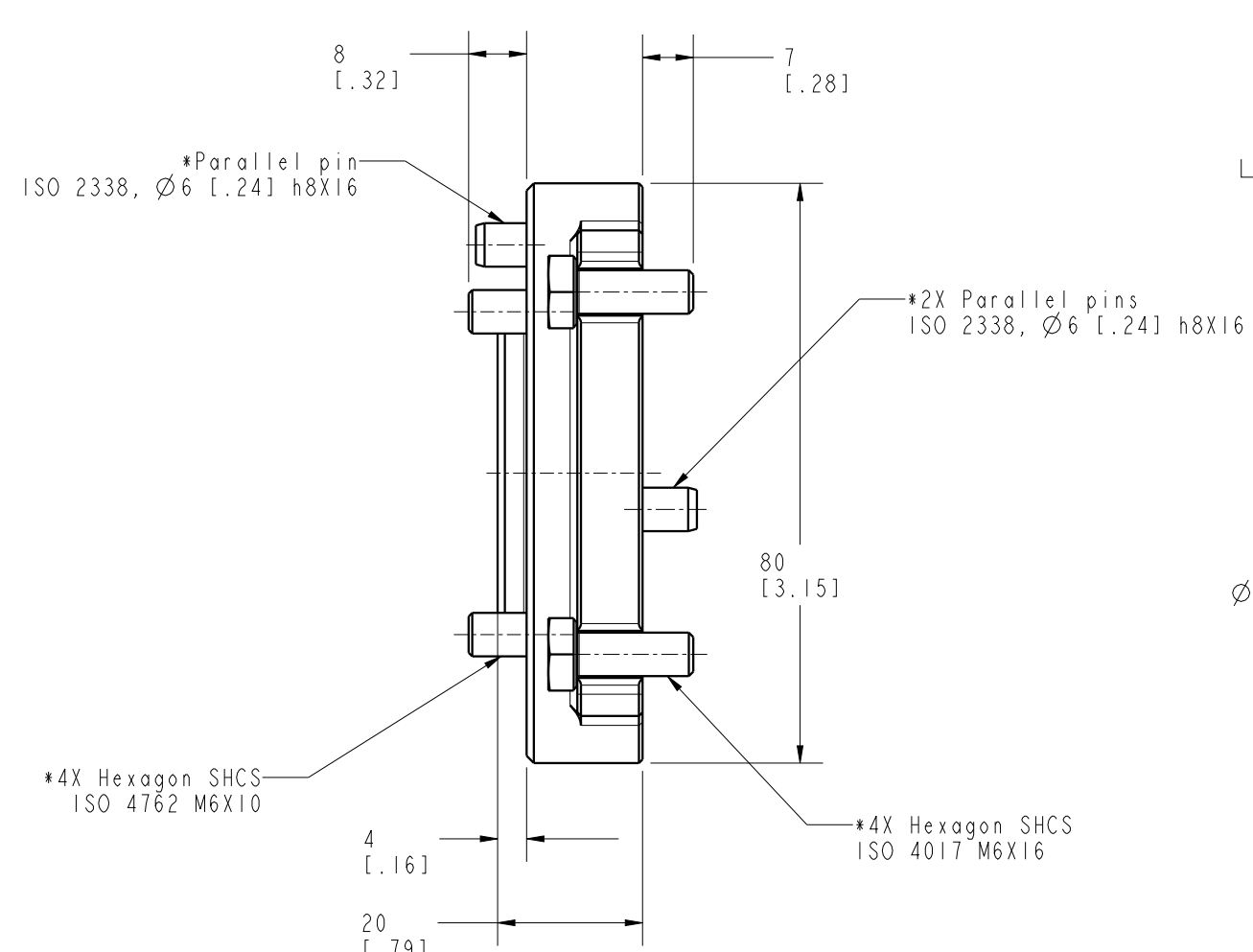


ILCMVAP61025015 REV A ECN 5752



NOTES:  
1. \*Items are included

<b>CAD CONTROL DRAWING</b>			
		VEKTEK, INC. 1334 E. SIXTH AVE. P.O. BOX 625 EMPORIA, KS. 66801 U.S.A.	

A	5752	RELEASE	ALS	10/22/25	VAP61025015	A	IMPAOT, RC, PQ90, ISO-63	
REV	IN ACCORDANCE WITH ECN	EFFECTIVE DATE	REVISED BY	DATE	REFERENCE MODEL	REF REV		
DRW BY:	ALS	<b>DRAWING STATUS: Released</b>			TOLERANCES DO NOT APPLY	UNITS	SIZE	ILCMVAP61025015
DATE:	7/2/25	PRODUCTION APPROVED FOR RELEASED STATUS ONLY			DIMENSIONS ARE NOMINAL	mm [inch]	B	

FORM FEG036, Rev. C