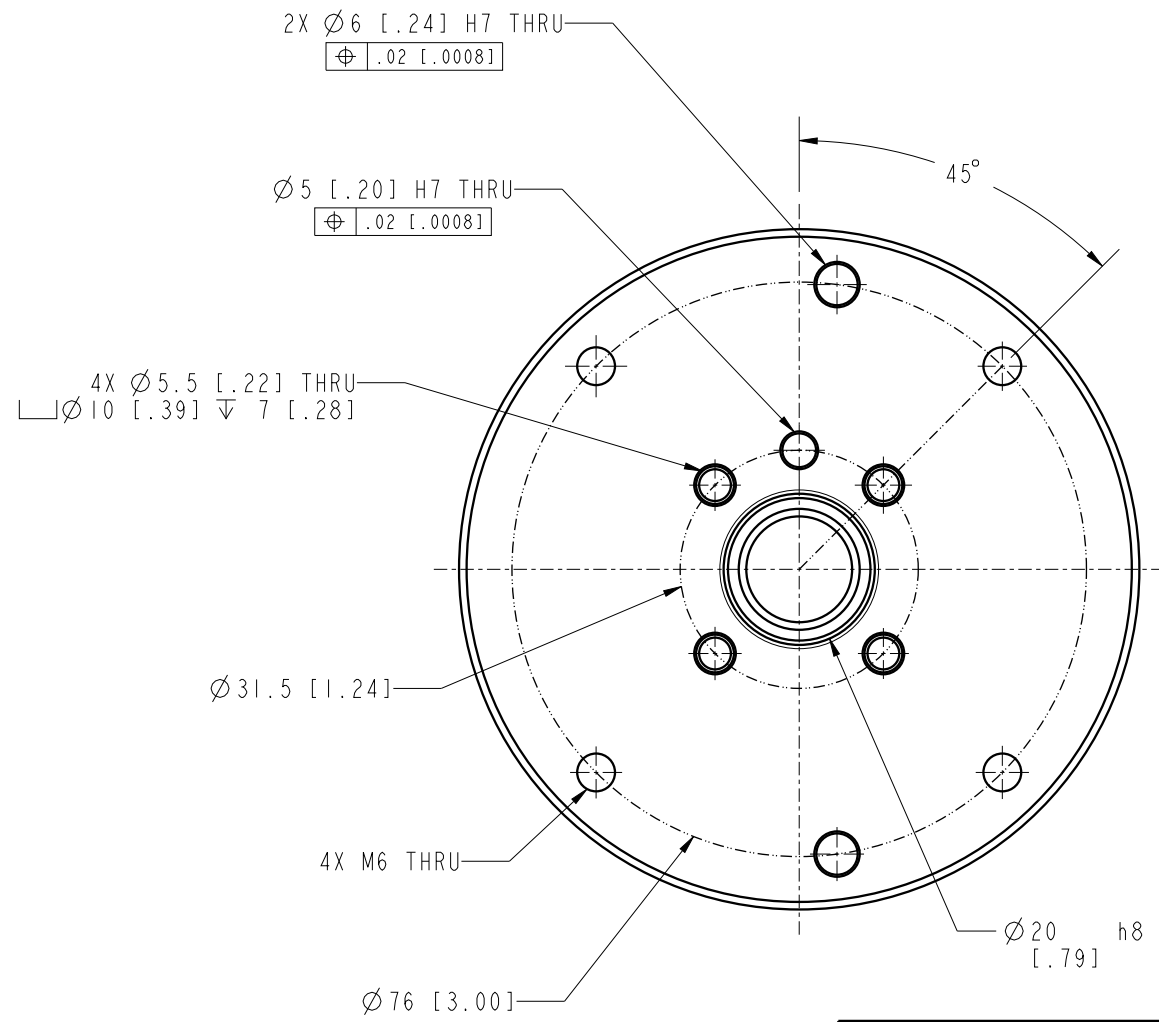
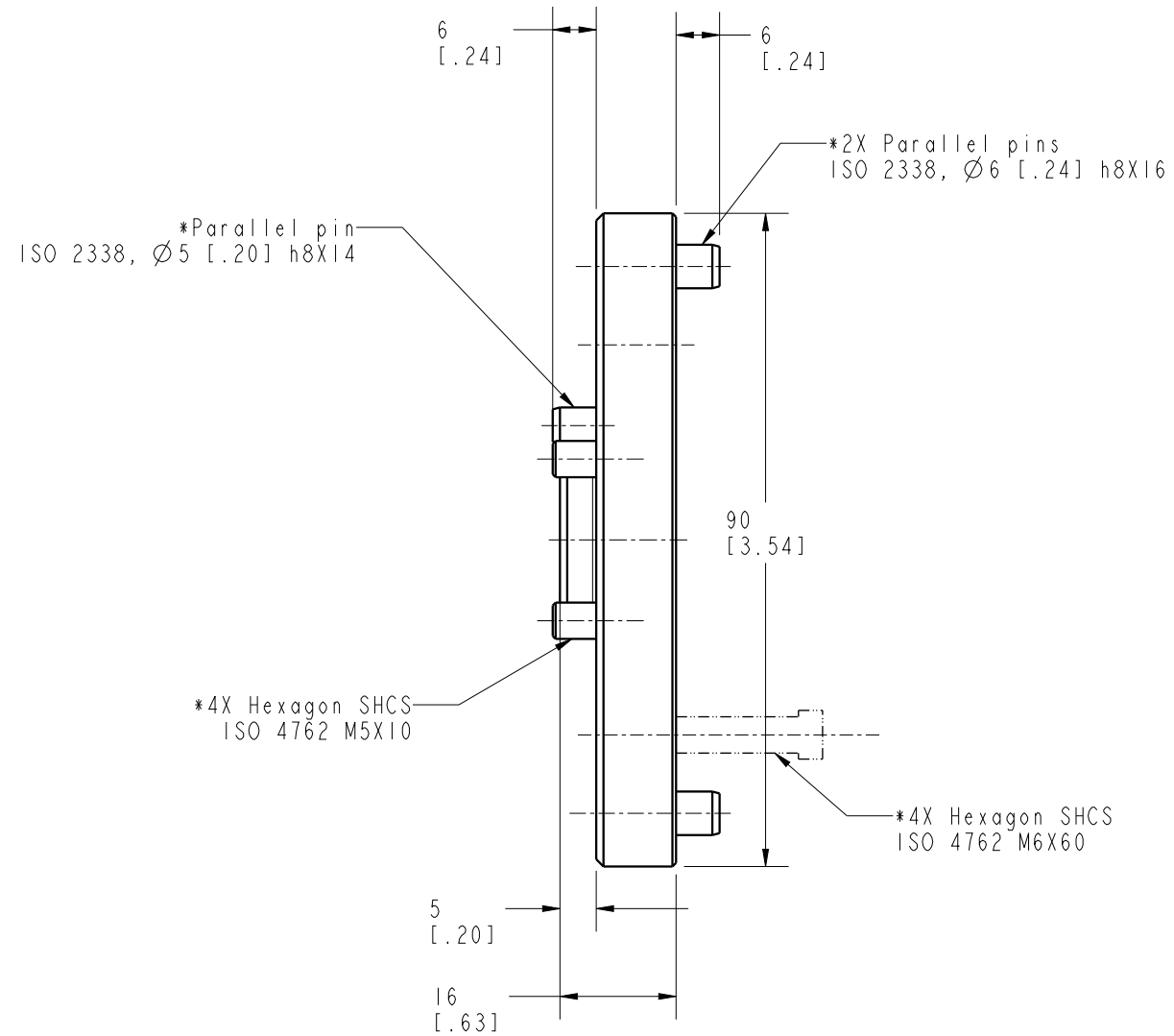


I L C M V A P 6 1 0 2 5 0 2 1    R E V   A    E C N   5 7 5 2



NOTES:  
1. \*Items are included

<b>CAD CONTROL DRAWING</b>			
		VEKTEK, INC. 1334 E. SIXTH AVE. P.O. BOX 625 EMPORIA, KS. 66801 U.S.A.	

A	5752	RELEASE	ALS	10/22/25	VAP61025021	A	IMPAQT, RC, PQ180, ISO-31.5
REV	IN ACCORDANCE WITH ECN	EFFECTIVE DATE	REVISED BY	DATE	REFERENCE MODEL	REF REV	
DRW BY:	ALS	<b>DRAWING STATUS: Released</b>			TOLERANCES DO NOT APPLY	UNITS	SIZE
DATE:	7/2/25	PRODUCTION APPROVED FOR RELEASED STATUS ONLY			DIMENSIONS ARE NOMINAL	mm [inch]	B
						I L C M V A P 6 1 0 2 5 0 2 1	REV A

FORM FEG036, Rev. C